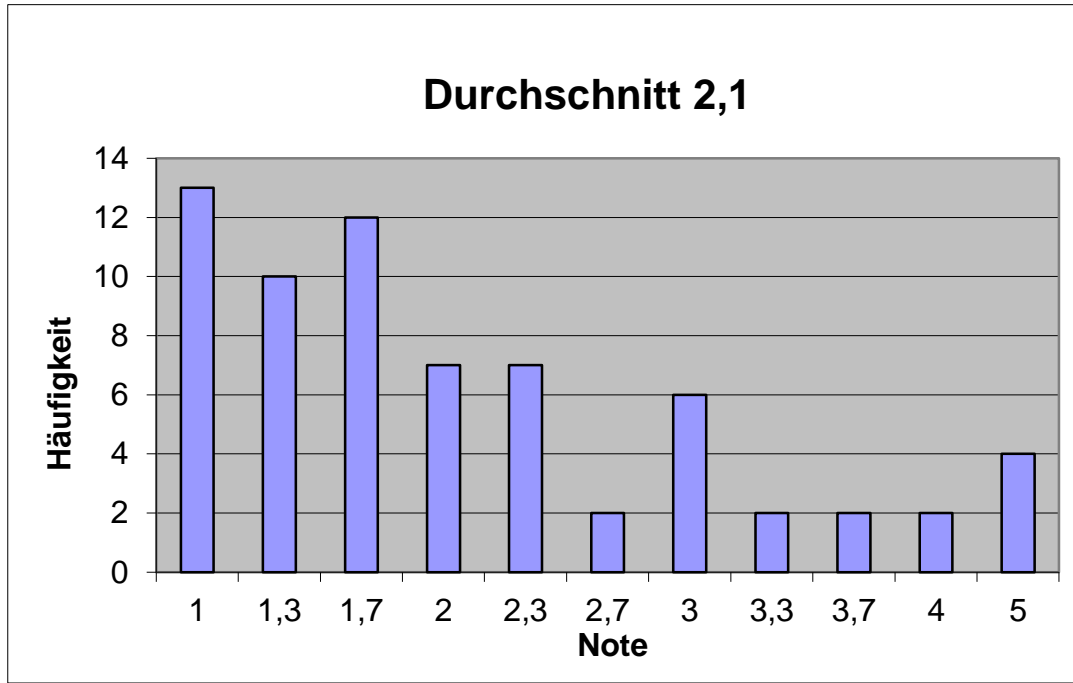


Notenstatistik WS 2017/18

B350 Grundlagen der Besteuerung



Note	Anzahl	%	% kumuliert
1	13	19.40%	19.40%
1.3	10	14.93%	34.33%
1.7	12	17.91%	52.24%
2	7	10.45%	62.69%
2.3	7	10.45%	73.13%
2.7	2	2.99%	76.12%
3	6	8.96%	85.07%
3.3	2	2.99%	88.06%
3.7	2	2.99%	91.04%
4	2	2.99%	94.03%
5	4	5.97%	100.00%