

Z-project: Neuropathology

Manuela Neumann
Department of Neuropathology
University of Tübingen and
German Center for Neurodegenerative Diseases



What can we offer ?

Expertise

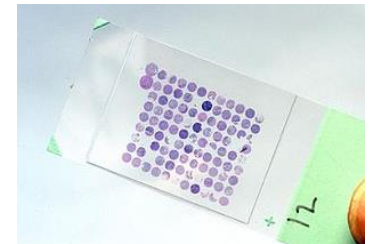
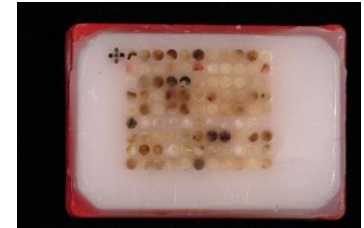
- full range of histopathological analysis for both human and mouse tissue samples of CNS, muscle and nerve,
- assistance in planning of projects, analysis and interpretation of results

Tissue processing, embedding, cutting:

- Paraffin embedding of formalin-fixed tissue
- Plastic embedding for EM
- Paraffin sections
- Frozen sections
- Vibratome sections
- Ultrathin plastic sections
- Generation of tissue microarrays

Stainings:

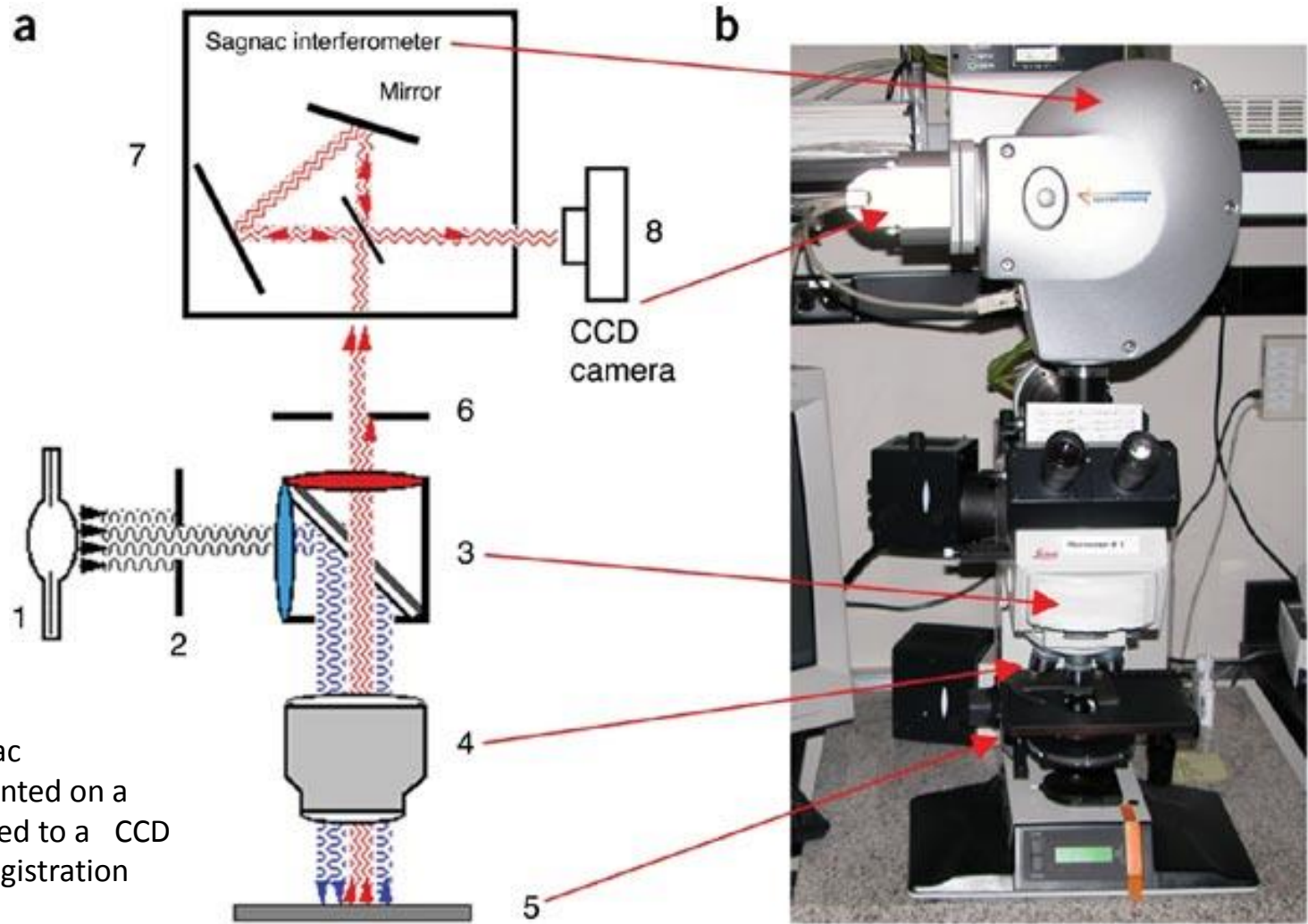
- standard histological stains
- Automated immunohistochemistry and immunofluorescence including antibody establishment
- in situ hybridisation
- TUNEL...



Microscopes:

- Light and fluorescence microscopes with CCD cameras
- Confocal laser scanning microscope:
LEICA TCS SP8 with white light laser (470-670nm); live cell imaging module
- SpectraCube system for spectral imaging and linear unmixing

Spectral imaging SpectraCube system (Applied spectral imaging ASI)



common path Sagnac interferometer mounted on a rotatable disk coupled to a CCD camera for image registration

Hesed M Padilla-Nash, Linda Barenboim-Stapleton, Michael J Difilippantonio & Thomas Ried
Nature Protocols 1, 3129 - 3142 (2007)

Spectral imaging SpectraCube system (Applied spectral imaging ASI)

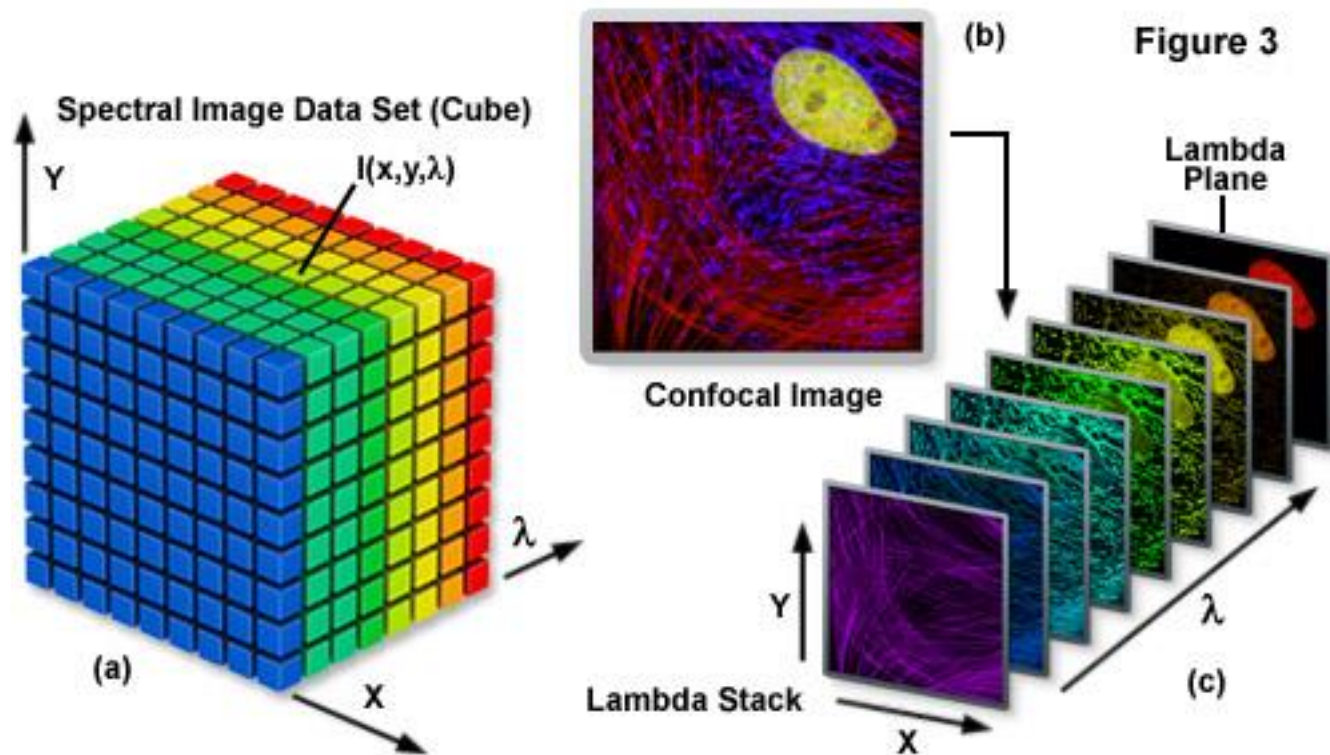
Underlying principle is the simultaneous measurement of the detailed spectrum of every point of a given area (i.e. of each pixel of a given CCD array),

Able to record fluorescence or brightfield spectra, such as absorption, transmission, or reflection spectra.

Spectral range 450-800 nm

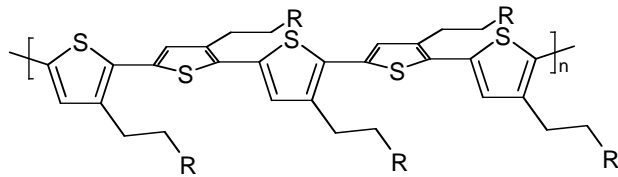
spectral resolution 5nm at 400 nm, <20nm at 780 nm,
completely visible as well as the near infrared

The Spectral Imaging Lambda Stack

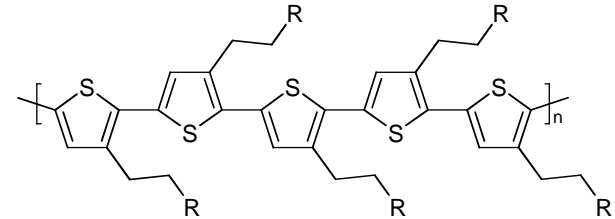


Luminescent conjugated polymers (LCPs)

- Molecules with rotationally flexible polythiophene chains
- Geometrical changes of the polymer chains gives changes in fluorescence



Twisted backbone –
blue/green fluorescence

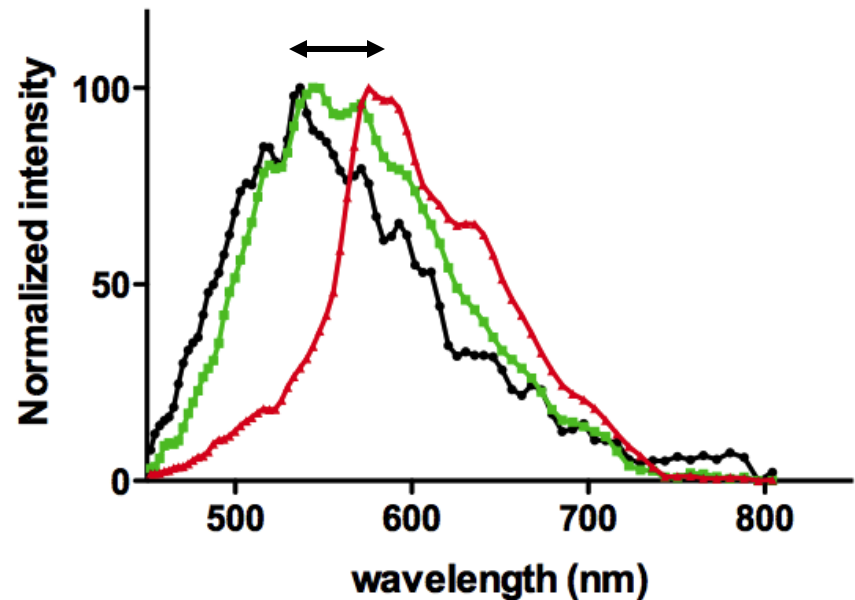
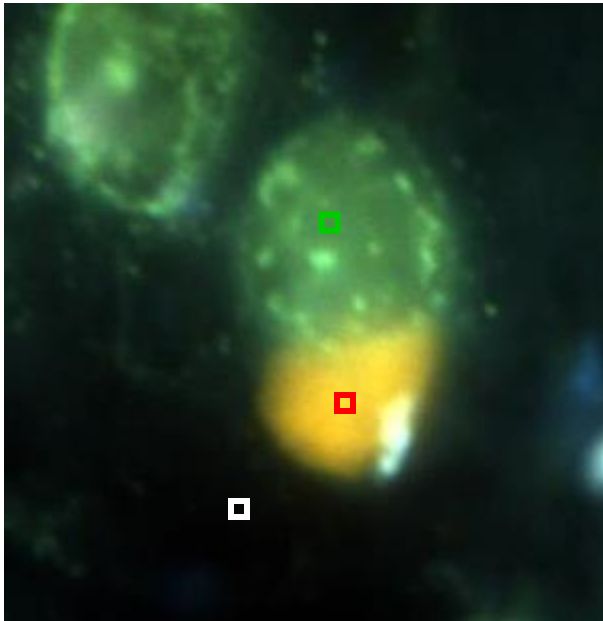


Planar backbone –
red fluorescence



Conformation sensitive optical probes

PTAA binds to inclusions in ALS resulting in distinct emission spectrum



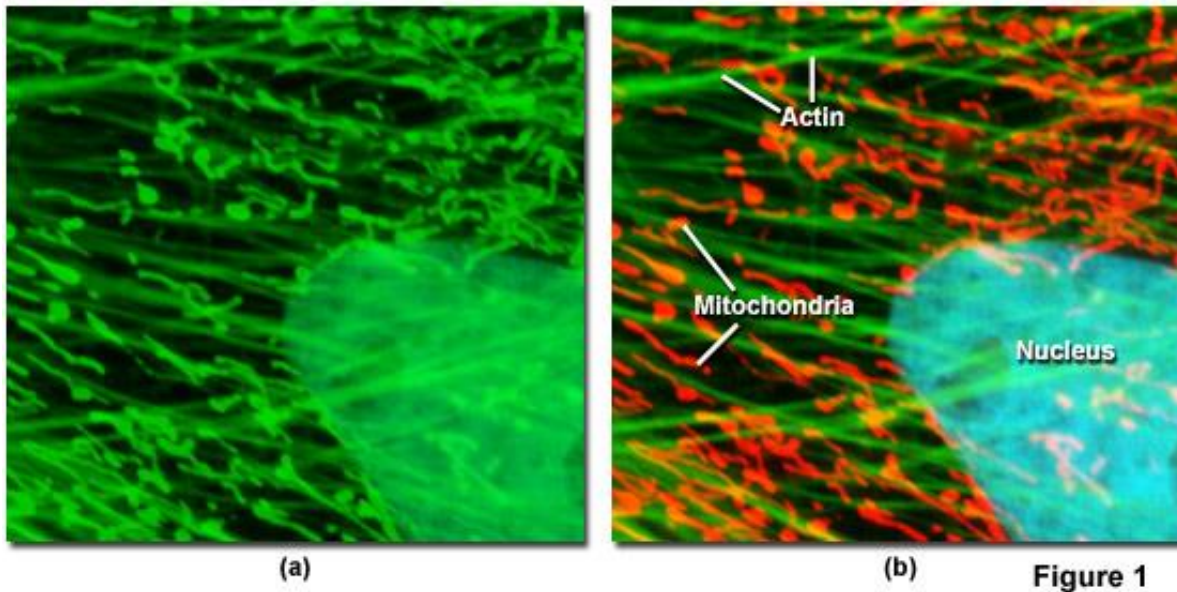
- RZ 237_background
- RZ 237_nucleus
- RZ 237-4

Ex: 405/30 long-pass filter
Em spectra: 450-800 nm

Spectral unmixing in multiple labeling experiments :

highly useful technique to untangle fluorescence spectral overlaps in cells and tissues labeled with synthetic fluorophores that would be otherwise difficult to separate (e.g. multi-labeling, life cell imaging separation of EYFP and EGFP)

Spectral Imaging and Linear Unmixing of Fixed Cells with Synthetic Dyes



SYTOX Green =nucleus, emission maximum 523

Alexa Fluor 488 = actin, emission maximum 518

Oregon Green 514 = mitochondria, emission maximum 528

Standard FITC cube, spectral imaging combined with spectral unmixing.

Spectral unmixing in multiple labeling experiments :

