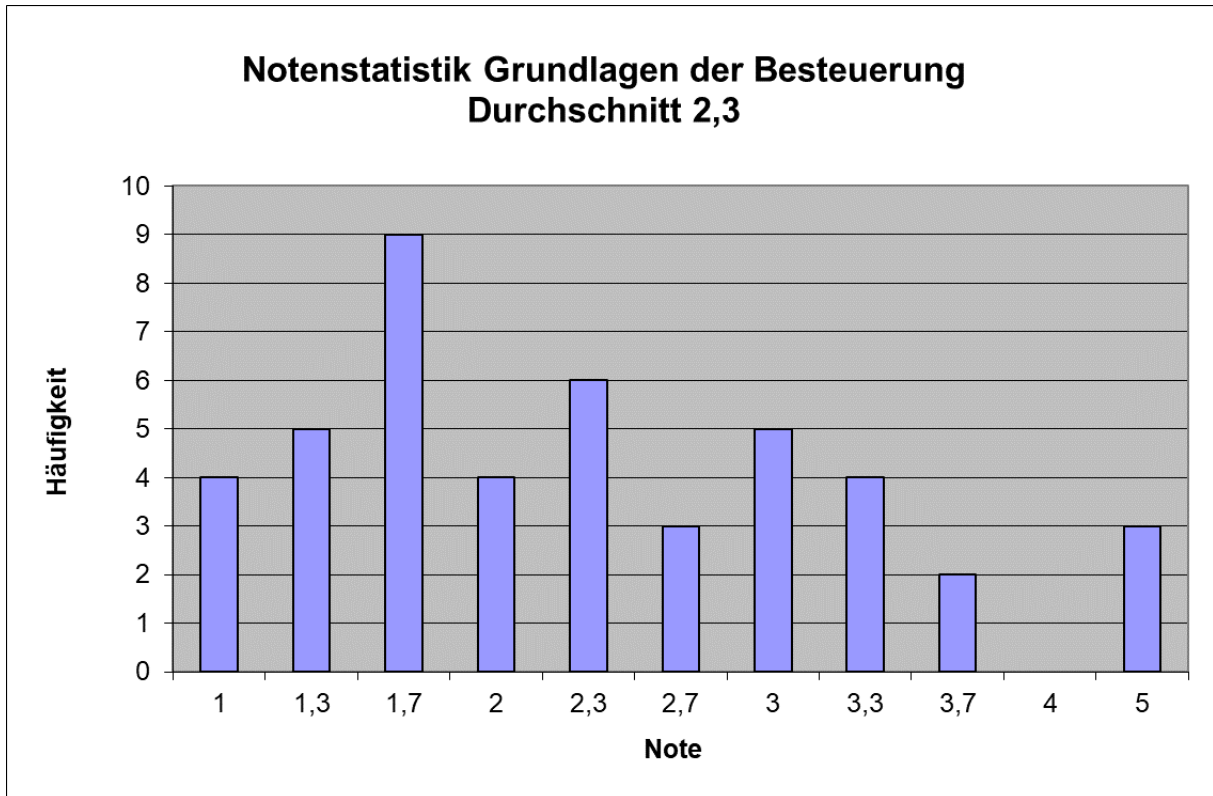


# Notenstatistik WS 2019/20

## B350 Grundlagen der Besteuerung



Note	Anzahl	Prozent	Kumuliert
1	4	8,89%	8,89%
1,3	5	11,11%	20,00%
1,7	9	20,00%	40,00%
2	4	8,89%	48,89%
2,3	6	13,33%	62,22%
2,7	3	6,67%	68,89%
3	5	11,11%	80,00%
3,3	4	8,89%	88,89%
3,7	2	4,44%	93,33%
4	0	0,00%	93,33%
5	3	6,67%	100,00%