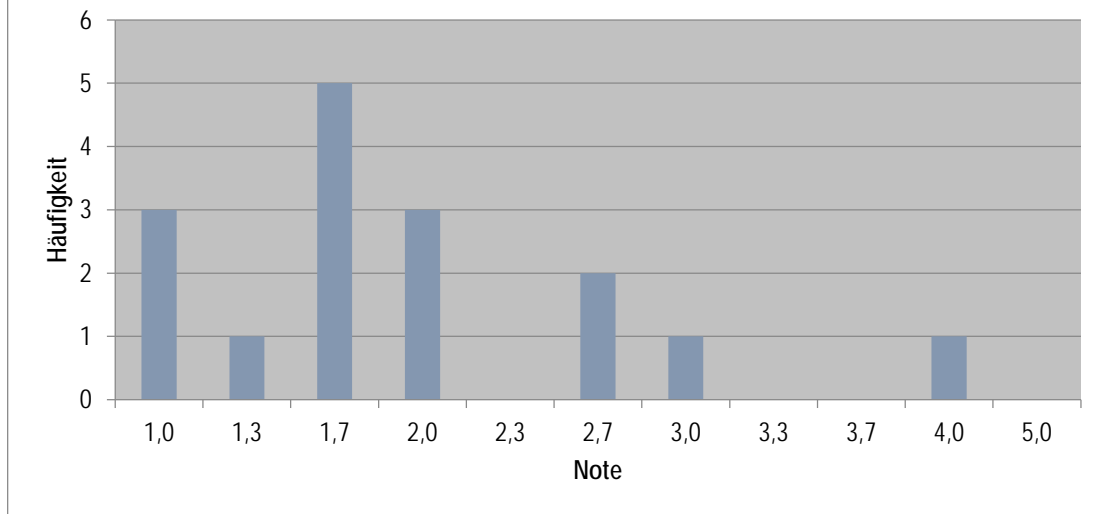


Notenstatistik HT WS 2019/2020
B351 Steuerliches Rechnungswesen
Durchschnitt: 1,9



Note	Anzahl	%	% kumuliert
1.0	3	18.75%	18.75%
1.3	1	6.25%	25.00%
1.7	5	31.25%	56.25%
2.0	3	18.75%	75.00%
2.3	0	0.00%	75.00%
2.7	2	12.50%	87.50%
3.0	1	6.25%	93.75%
3.3	0	0.00%	93.75%
3.7	0	0.00%	93.75%
4.0	1	6.25%	100.00%
5.0	0	0.00%	100.00%