



Cite this: *EES Catal.*, 2023, 1, 972

Carbon oxidation with sacrificial anodes to inhibit O₂ evolution in membrane-less bioelectrochemical systems for microbial electrosynthesis†

Nils Rohbohm,^a Tianran Sun,^{ab} Ramiro Blasco-Gómez,^{id ac} James M. Byrne,^{id de} Andreas Kappler^{df} and Largus T. Angenent^{id *afghi}

Microbial electrosynthesis is an emerging biosynthesis technology that produces value-added chemicals and fuels and, at the same time, reduces the environmental carbon footprint. However, constraints, such as low current densities and high inner resistance, disfavor this technology for industrial-scale purposes. The cathode performance has been strongly improved in recent years, while the anode performance has not been given enough attention despite its importance in closing the electric circuit. For traditional water electrolysis, O₂ is produced at the anode, which is toxic to the anaerobic autotrophs that engage in microbial electrosynthesis. To overcome O₂ toxicity in conventional microbial electrosynthesis, the anode and the cathode chamber have been separated by an ion-exchange membrane to avoid contact between the microbes and O₂. However, ion-exchange membranes increase the maintenance costs and compromise the production efficiency by introducing an additional internal resistance. Furthermore, O₂ is inevitably transferred to the catholyte due to diffusion and electro-osmotic fluxes that occur within the membrane. Here, we proved the concept of integrating carbon oxidation with sacrificial anodes and microbes to simultaneously inhibit the O₂ evolution reaction (OER) and circumvent membrane application, which allows microbial electrosynthesis to proceed in a single chamber. The carbon-based anodes performed carbon oxidation as the alternative reaction to the OER. This enables microbial electrosynthesis to be performed with cell voltages as low as 1.8–2.1 V at 10 A m⁻². We utilized *Methanothermobacter thermautotrophicus* ΔH in a single-chamber Bioelectrochemical system (BES) with the best performing carbon-based anode (i.e., activated-carbon anode with soluble iron) to achieve a maximum cathode-geometric CH₄ production rate of 27.3 L m⁻² d⁻¹, which is equal to a volumetric methane production rate of 0.11 L L⁻¹ d⁻¹ in our BES, at a coulombic efficiency of 99.4%. In this study, *M. thermautotrophicus* ΔH was majorly limited by the sulfur source that inhibited electromethanogenesis. However, this proof-of-concept study allows microbial electrosynthesis to be performed more energy-efficiently and can be immediately utilized for research purposes in microbial electrosynthesis.

Received 19th June 2023,
Accepted 23rd July 2023

DOI: 10.1039/d3ey00141e

rsc.li/eescatalysis

Broader context

In microbial electrolysis cells, electric power serves as the driving force for microbial reduction of carbon dioxide at the cathode to produce multi-carbon and electron-dense organic molecules that can serve as fuels and terminal chemical products. This idea is called microbial electrosynthesis and, combined with renewable energy to generate electrical power, makes it an emerging technology for sustainable chemical production. Microbial activity and electrode

^a Environmental Biotechnology Group, Department of Geosciences, University of Tübingen, Schnarrenbergstr. 94-96, 72076 Tübingen, Germany.

E-mail: l.angenent@uni-tuebingen.de

^b State Key Lab of Urban and Regional Ecology, Research Center for Eco-Environmental Sciences, Chinese Academy of Sciences, Beijing 100085, China

^c Laboratory of Chemical and Environmental Engineering (LEQUIA), Institute of the Environment, University of Girona, Carrer Maria Aurelia Capmany, 69, 17003 Girona, Spain

^d Geomicrobiology Group, Department of Geosciences, University of Tübingen, Schnarrenbergstr. 94-96, 72076 Tübingen, Germany

^e School of Earth Sciences, University of Bristol, Wills Memorial Building, Queens Road, Bristol, BS8 1RJ, UK

^f Cluster of Excellence: EXC 2124: Controlling Microbes to Fight Infection, Tübingen, 72076, Germany

^g AG Angenent, Max Planck Institute for Biology, Max Planck Ring 5, D-72076 Tübingen, Germany

^h Department of Biological and Chemical Engineering, Aarhus University, Gustav Wieds Vej 10D, 8000 Aarhus C, Denmark

ⁱ The Novo Nordisk Foundation CO₂ Research Center (CORC), Aarhus University, Gustav Wieds Vej 10C, 8000 Aarhus C, Denmark

† Electronic supplementary information (ESI) available. See DOI: <https://doi.org/10.1039/d3ey00141e>

performance are critical factors in determining the overall efficiency of microbial electrosynthesis. Several studies have focused on modifying the cathode to improve the microbe-electrode interaction and compatibility due to its importance in generating reducing power for microbial electrosynthesis. However, so far, the focus was rarely on the anode performance. Here, we employed a sacrificial carbon-based anode that enabled us to remove the ion-exchange membrane in the electrochemical cell. We proved the concept of a single-chamber bioelectrochemical cell using *Methanothermobacter thermautotrophicus* ΔH with this sacrificial carbon-based anode. This study shows a different path forward to perform microbial electrosynthesis, especially in the laboratory for basic research.

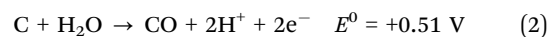
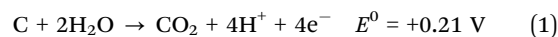
Introduction

Globally increasing demands for value-added chemicals and fuels require innovative chemical and biochemical synthesis strategies to proceed in a more cost-efficient and environmentally friendly manner. Microbial electrosynthesis is a bioprocess with bioelectrochemical systems to convert inorganic gases into valuable, multi-carbon compounds to store excessive renewable energy such as wind or solar energy.^{1,2} This makes it an attractive technology for achieving the goal of a carbon-neutral society. Microbial activity and electrode performance are critical factors in determining the overall efficiency of microbial electrosynthesis. However, the inherent problem of scaling-up microbial electrosynthesis is the currently low current density of the bioelectrochemical system, which results in a considerably lower production rate compared to chemical electrosynthesis that produces the same compounds (Table S1, ESI[†]). To increase the current density, the electrochemical performance must be increased by, for example, improving the cathode performance. Indeed, several studies have focused on the modification of the cathode to improve microbe–electrode interactions and its biocompatibility.^{3,4}

Besides the biocompatibility problems, another troublesome part of bioelectrochemical systems is the ion-exchange membrane. Classically, the anode is separated from the cathode by an ion-exchange membrane to avoid interaction of the O_2 evolving at the anode with the strict anaerobic microbes in the cathodic chamber.⁵ However, applying an ion-exchange membrane in bioelectrochemical systems has several disadvantages. By including an ion-exchange membrane, the internal resistance is increased.⁶ This will lead to decreased ion transport, which consequently limits electron transfer and reduces the current generation. Ideally, protons are primarily transported from the anodic to the cathodic chamber using a cation exchange membrane to maintain hydrogen production. However, the transfer of other cations, such as sodium or potassium, to the cathode chamber cannot be neglected and reduces the ionic transport number of protons. Consequently, the slower mass transfer rate of protons leads to a pH gradient.⁷ In addition, the ion-exchange membrane also generates an electro-osmotic flow that allows all ionic and non-ionic solutes, including O_2 , to pass through membrane into the cathode chamber, thus, making its purpose less effective.⁸ The pore size of the membrane in addition to O_2 permeation, which allows biofilm formation, makes it vulnerable to fouling.⁹ Finally, the combination of all the disadvantages will result in high maintenance and operating costs.¹⁰

The ideal bioelectrochemical system would, therefore, be a single-chamber system in which the ion-exchange membrane has been removed.¹¹ This would improve not only the current generation but also the synthesis efficiency. Cl_2 and O_2 are the main gases produced on the anode side, with Cl_2 being not only a strong oxidizing agent to many elements but also very toxic. While Cl_2 can be avoided by removing the chlorine-ions from the anodic chamber, O_2 would still be produced without modifications at the anode through water splitting and hinder anaerobic microbes from growing for microbial electrosynthesis to proceed. Thus far, few reports have been published showing membrane-less bioelectrochemical systems, and most reports are about microbial fuel cells and enzymatic fuel cells. Furthermore, most membrane-less, single-chamber systems were operated without O_2 -sensitive microbes.^{12,13} Giddings *et al.*⁵ designed a membrane-less system for microbial electrosynthesis in which the anode was placed at the boundary of the liquid interface to avoid O_2 from mixing. Besides, different patent applications for single-chamber bioelectrochemical systems were filed with setups to capture and remove O_2 away from the cathode.^{14,15} However, none of these innovations had tried to circumvent the O_2 -evolution reaction (OER) at the anode.

An appealing approach to avoid O_2 formation at the anode is carbon-assisted water electrolysis (CAWE) for which carbon is oxidized at the anode instead of the OER in conventional electrolysis.^{16,17} The classical hydrogen-evolution reaction (HER) is not disturbed and proceeds at CAWE. CAWE can include: (1) the oxidation of carbon-based electrodes, which we refer to as carbon oxidation with sacrificial anodes; and (2) the oxidation of soluble carbon materials (which we did not study) or non-soluble carbon materials in the anolyte. Here, we address carbon oxidation of sacrificial anodes, forming CO_2 , CO , and oxygenated surface-functional groups. The desired two chemical reactions can be described as follows (eqn (1) and (2)):



A major advantage of using CAWE instead of conventional water electrolysis with O_2 evolution at the anode is the lower operating cell voltage, resulting in lower energy consumption rates. For example, the standard electrode cell potential for the four-electron process (eqn (1)) for CAWE is $E_{\text{cell,CAWE}}^0 = -0.21 \text{ V}$, while the conventional water electrolysis reaction requires $E_{\text{cell,water electrolysis}}^0 = -1.23 \text{ V}$.¹⁶ Another advantage of CAWE compared to conventional water electrolysis is the higher carbon-oxidation reaction rate than the OER rate at the anode (exchange current density: $j_{0,\text{CAWE}} = 10^{-6} \text{ Acm}^{-2}$ vs.

$j_{0,\text{OER}} = 10^{-7} \text{ A cm}^{-2}$).¹⁶ Albeit, the carbon-oxidation reaction at the anode is still slower than the HER rate at the cathode ($j_{0,\text{HER}} = 10^{-3} \text{ A cm}^{-2}$).¹⁸ Finally, a necessary substrate for microbial electrosynthesis is CO_2 or CO , which is the desired product of carbon oxidation with sacrificial anodes. Thus, the matching product formation as extra carbon source for the microbes is another pertinent advantage of carbon oxidation with sacrificial anodes for microbial electrosynthesis.

An example of carbon oxidation with carbon-based anodes was shown by Holubowitch *et al.*,¹⁷ who demonstrated an abiotic membrane-less electrochemical cell that was capable of reducing O_2 to deoxygenate water. While their main focus was on reducing O_2 , we identified with their data that either no O_2 was produced or O_2 production was decreased at the anode and that O_2 was electrochemically reduced at the cathode. Carbon oxidation with carbon-based anodes was not only tested abiotically but also for bioelectrochemical systems. Lai *et al.*¹⁹ found a lower O_2 content and a higher CO_2 content in their anodic compartment using graphite. They concluded that carbon oxidation with the graphite anode was the main cause of the lower O_2 formation. A follow-up study for the removal of perchloroethylene in a membrane-less bioelectrochemical system used graphite granules as a single anode to avoid O_2 production.²⁰ To our knowledge, carbon oxidation with sacrificial anodes has not been tested for microbial electrosynthesis.

The objective of this work was a proof of concept to show that carbon oxidation can be utilized in a single-chamber bioelectrochemical system to specifically perform microbial electrosynthesis. We used different types of carbon electrodes as anodes and assessed whether O_2 formation was inhibited or just decreased. In addition, we tested iron (soluble and coated) materials with carbon electrodes to further circumvent the OER by including a parallel faradaic reaction. After we had studied the feasibility of our carbon electrodes and deciphered the mechanism of the inhibition, we operated our carbon electrodes in bioelectrochemical systems to evaluate their potential for microbial electrosynthesis. Here, we report the successful implementation of carbon oxidation with a sacrificial anode for microbial electrosynthesis using *Methanothermobacter thermautotrophicus* ΔH , which is an autotrophic and anaerobic microbe, and which is being used in the power-to-gas concept to store renewable electric power into CH_4 gas.²¹

Results and discussion

The minimal required cell potential is lower for carbon oxidation than for O_2 evolution at the anode, while the kinetics of the carbon oxidation reaction is higher

For our proof-of-concept process, we used the two carbon-oxidation reactions from CAWE compared to the OER from conventional water electrolysis. The two carbon-oxidation reactions have a theoretically more favorable thermodynamic potential of +0.21 V vs. RHE (reversible hydrogen electrode which depends on the solution pH) for CO_2 production (four

electrons in eqn (1)) and +0.51 V vs. RHE for CO production (two electrons in eqn (2)), respectively,²² than the OER, with a standard potential of +1.23 V vs. RHE. For conventional water electrolysis with the OER, the overall cell potential would be -1.23 V . However, electrode materials have properties that introduce an overpotential. In the case of carbon electrodes, the overpotential can be up to 500 mV or higher.²³

To measure the overpotentials (η) for our specific BES for carbon oxidation with carbon-based anodes, OER, and HER, we performed linear sweep voltammetry on the activated carbon (as the anode) and carbon cloth (as the cathode). Linear sweep voltammograms demonstrated that the measured overpotential ($|\eta| = [E_{\text{onset potential}} + E_{\text{reference electrode correction}}] - [E^0 - 0.059 \text{ pH}]$) of carbon oxidation with activated carbon was +1.16 V, while the HER for carbon cloth had an overpotential of +0.190 V (Fig. 1). Thus, the minimum required cell potential for CAWE anodes would be -1.56 V ($E_{\text{HER}}^0 - \eta_{\text{HER}} - [E_{\text{carbon oxidation}}^0 + \eta_{\text{carbon oxidation}}]$), which is -1.37 V greater than the theoretical value ($E_{\text{cell, carbon oxidation}}^0 = E_{\text{HER}}^0 - E_{\text{carbon oxidation}}^0 = -0.21 \text{ V}$). The OER with the activated carbon had an overpotential of +0.86 V (Fig. 1). Therefore, the minimal required cell potential for conventional water electrolysis would be equivalent to -2.28 V ($E_{\text{cell, water electrolysis}} = E_{\text{HER}}^0 - \eta_{\text{HER}} - [E_{\text{OER}}^0 + \eta_{\text{OER}}]$), which is -1.05 V greater than the theoretical value. The considerably less negative overall cell potential for CAWE compared to conventional water electrolysis should lower the energy consumption in our system as well.

However, besides the cell potentials, the kinetics of the different electrochemical reactions are also important. The linear-sweep voltammogram of activated carbon did not show any pristine carbon-oxidation peaks to compare the kinetic value of the carbon oxidation to the OER (Fig. 1). However, the exchange current density, which is a dimension of the reaction rate, can be deduced from the linear-sweep voltammograms by means of the Butler-Volmer equation (eqn (S1) in Note S1 of the ESI[†]).²⁴ The exchange current density for carbon oxidation was $10^{-5} \text{ A cm}^{-2}$ and was one magnitude higher than the OER at $10^{-6} \text{ A cm}^{-2}$. Therefore, the carbon oxidation reaction with sacrificial anodes is a faster electrochemical reaction than OER.

Carbon-based anodes with and without iron species circumvented the need for a membrane, opening the possibility of a membrane-less system

To identify whether O_2 production is inhibited by carbon oxidation, we measured the O_2 content of an abiotic, two-electrode electrochemical system for five days. The O_2 content measurement was performed abiotically to circumvent using L-cysteine, which would be the preferred sulfur source and reducing agent in our medium for the BES experiments, and which would have removed O_2 from the electrolyte. The abiotic experiments were performed in triplicate for two temperature conditions: room temperature and $60 \text{ }^\circ\text{C}$, which is the optimal growth temperature of *M. thermautotrophicus* ΔH . We used a graphite rod, thermally activated graphite felt, carbon cloth, and activated carbon as our carbon anodes for four out of seven

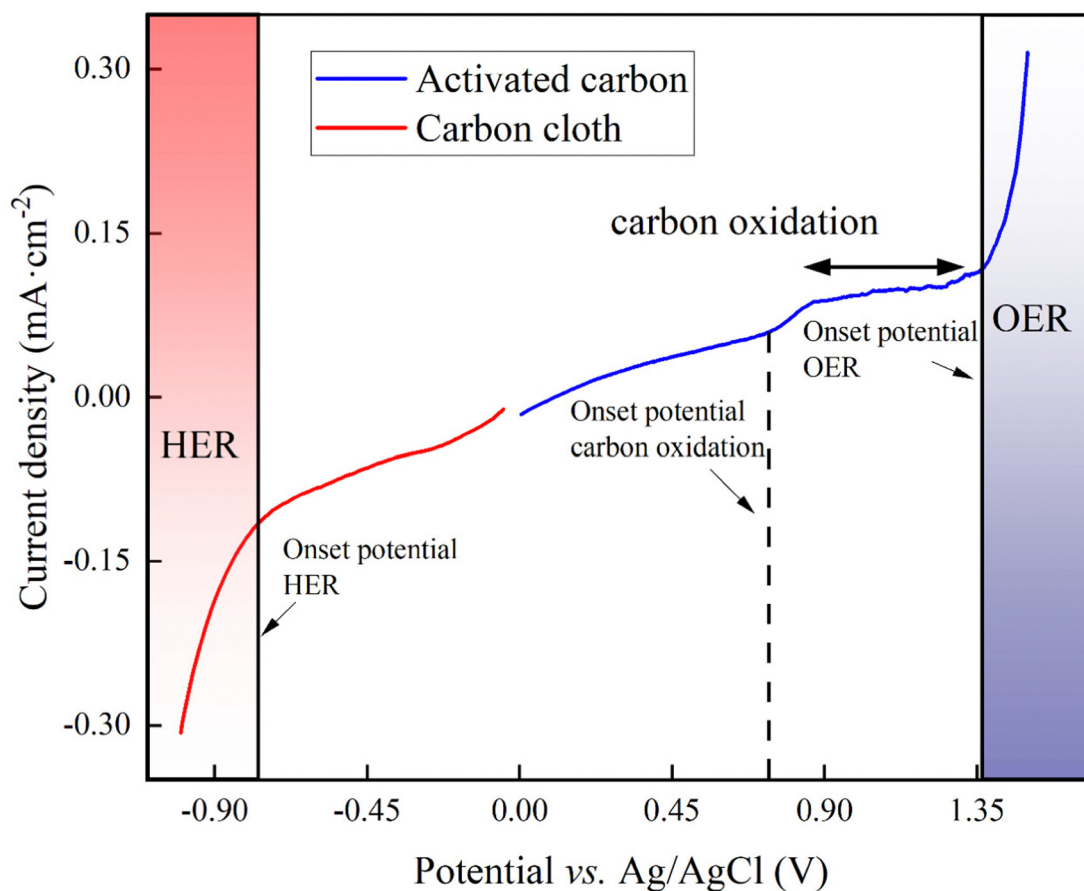
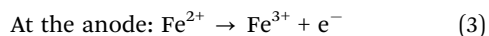


Fig. 1 Linear sweep voltammogram of the activated-carbon anode (blue line) and the carbon-cloth cathode (red line) in 66 mM phosphate buffer (pH = 7.2) at a scan rate of 20 mV s⁻¹.

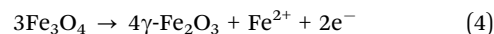
treatments and included a platinum anode that was poised at 10 A m⁻² in 0.066 M phosphate buffer as the positive control to compare the results of the carbon oxidation with sacrificial anodes to the OER (Fig. 2).

We added Fe²⁺ species in the form of: (1) soluble Fe²⁺ species (0.1 g L⁻¹ of Fe²⁺, corresponding to 0.27 g L⁻¹ FeSO₄); and (2) coated magnetite for three out of seven treatments to this abiotic O₂ evolution study. We added Fe²⁺ species because abiotic electrochemical systems increased the current density for carbon oxidation with sacrificial anodes without reducing the Coulombic efficiency.²⁵ Soluble Fe²⁺ is directly reduced at the carbon-based anode to Fe³⁺ at electrochemical rates that are higher than carbon oxidation and the OER (eqn (3)).



Therefore, soluble Fe²⁺ is an ultimate electron donor in addition to the carbon-based anodes when Fe²⁺ is continuously added to the system. Soluble Fe²⁺ was added to the thermally activated-graphite-felt and activated-carbon anodes. Magnetite is another biocompatible Fe²⁺ source. We coated magnetite on the activated carbon to form the anode after performing a magnetite-to-carbon ratio analysis (Note S2 of the ESI[†]). Magnetite is a mixed-valent Fe(II), Fe(III) magnetic

iron mineral that oxidizes to maghemite (γ -Fe₂O₃), donating one electron (eqn (4)):



All carbon-based anodes with and without Fe²⁺ species showed an inhibitory effect on the O₂ production compared to the positive control for the first 180 min at room temperature, with the graphite-rod and carbon-cloth anodes producing more O₂ compared to the thermally activated-graphite-felt and activated-carbon anodes (Fig. 2(A)). Thus, a pretreatment to activate the graphite or carbon will permit a faster inhibition of O₂ synthesis. We turned off the electrochemical system with the platinum anode after 180 min to avoid accumulating O₂ and H₂ and creating a Knallgas reaction. For the next 5 days, the accumulated O₂ concentration of all the carbon-based anodes was relatively low (<1 ppm), but activated-carbon anodes with and without soluble Fe²⁺ could sustain a nearly O₂-free environment (Fig. 2(B)). However, magnetite-coated activated-carbon anodes showed a higher O₂ concentration at room temperature compared to the other activated carbon-based electrodes for unknown reasons (Fig. 2(B)). A possibility is a change of the composition and reactivity of the activated carbon after synthesis of magnetite (pH change from acidic to basic).

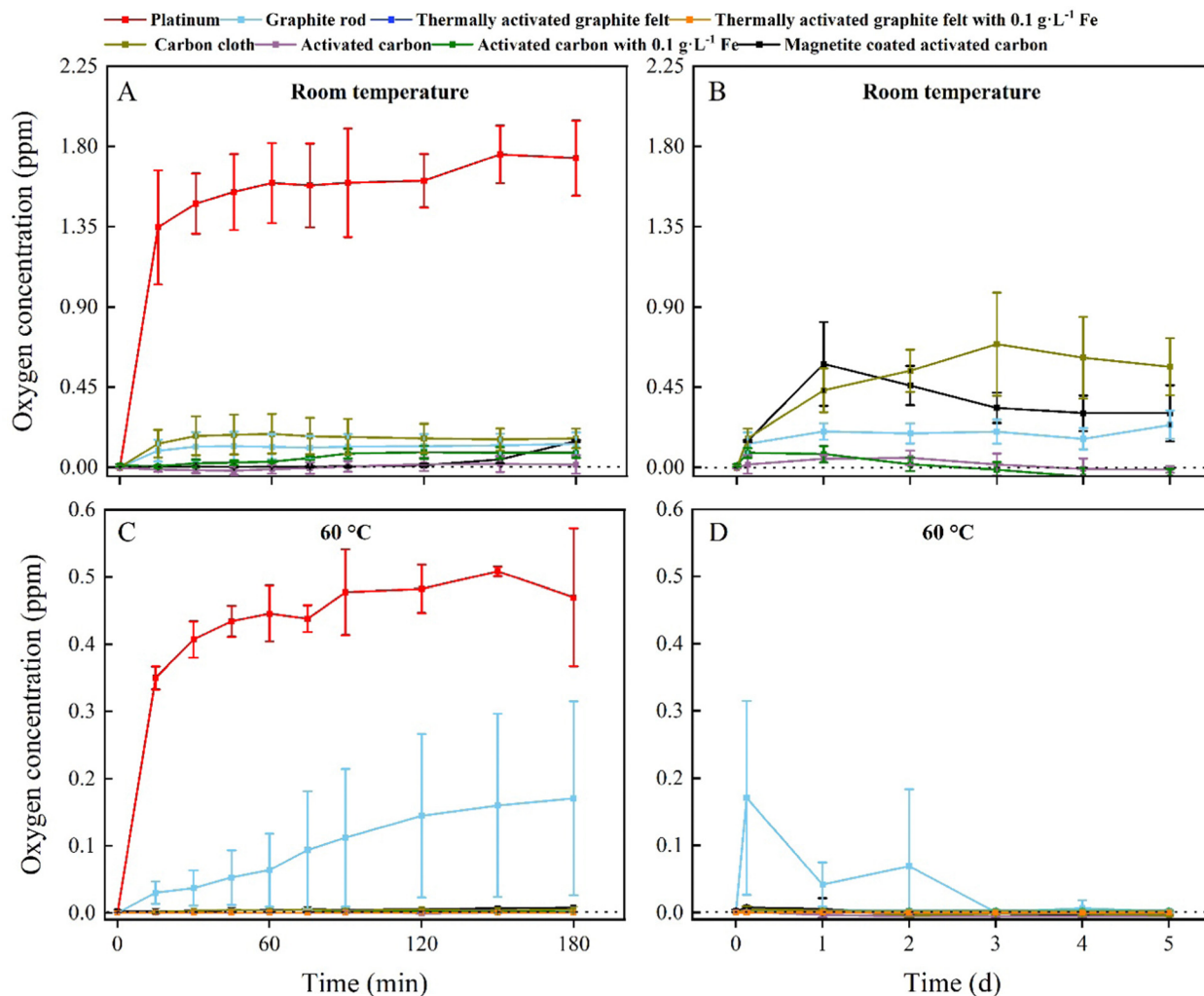


Fig. 2 O₂ concentration in the electrolyte of platinum, graphite-rod, thermally activated graphite felt, carbon-cloth, and activated-carbon anodes over time. Two temperature conditions were included. Two treatments with thermally activated graphite felt and three treatments with activated carbon were included, including iron additions. The error bars show the standard deviation for the average values from triplicate systems: (A) the O₂ concentration at room temperature for 180 min; (B) the O₂ concentration at room temperature for 5 days; (C) the O₂ concentration at 60 °C for 180 min; and (D) the O₂ concentration at 60 °C for 5 days. We omitted the data for the first 180 min from panels B and D for clarity reasons. No L-cysteine was added to these abiotic experiments.

In contrast, all the experiments with carbon-based anodes at 60 °C inhibited O₂ production during the first 180 min, except for the graphite-rod anode (sky-blue line, Fig. 2(C)). In addition, no O₂ was produced at 60 °C for the thermally activated-graphite-felt and activated-carbon anodes with and without soluble Fe²⁺ and activated-carbon anodes with magnetite (Fig. 2(D)). Because the kinetics of a reaction are directly related to the temperature, the increase in the temperature, therefore, increased the carbon-oxidation rate. Likewise, the kinetics of the OER were also affected by the increase in temperature. However, our results show that no production of O₂ occurred and that carbon oxidation was the dominating reaction in our system (Fig. 2(D)).

During the five-day operating period, the O₂ concentration in the electrolyte with the graphite-rod anode gradually decreased, suggesting that graphite needs an activation time

to oxidize its surface and efficiently perform carbon oxidation (Fig. 2(D)). Indeed, the thermally activated-graphite-felt and activated-carbon anodes did not show oxygen evolution during the first couple of days of the operating period (Fig. 2(D)). The concentrations of CO₂ and CO were measured for the two temperature conditions and the seven treatments, but the concentrations were very low for both gases due to the low applied current of up to 1 mA cm⁻² and were not further monitored. In summary, the carbon-based anodes circumvented O₂ production at 60 °C and were used for further thermophilic BES experiments. Because we completely inhibited O₂ evolution at the anode, we can remove the membranes from the bio-electrochemical system to perform microbial electrosynthesis. When comparing these abiotic results to the BES experiments, the abiotic O₂ evolution results will be conservative because we added reducing agents only to the microbial medium.

Different carbon materials as the anode affected the CH₄ production duration of microbial electrosynthesis, and competitive methane production rates were achieved to other BES studies

In our proof-of-concept BES for microbial electrosynthesis, we opted for the microbe *M. thermautotrophicus* ΔH due to its high growth rate (doubling time of 120 min) and relatively high CH₄ production rate.²¹ This archaeal strain grows anoxically at 60 °C and shows a resilient behavior in the presence of O₂ by having the ability to grow after exposure to air for several hours.²⁶ However, as a strict anaerobic methanogen, it is still sensitive to O₂ for longer operating periods, resulting in the absence of growth when prolonged O₂ is present. The BES experiments were performed at 60 °C and close to neutral-pH conditions with graphite-rod, thermally activated-graphite-felt, and activated-carbon anodes in an experimental design with six treatments including soluble Fe²⁺ and magnetite. We set the current at 2 mA and with a 1 × 1 cm cathode-surface area the cathode-based geometric current density was 1 mA cm⁻² (Fig. 3).

M. thermautotrophicus ΔH produced CH₄ with CO₂ as the sole carbon source during carbon oxidation with sacrificial anodes for all treatments (Fig. 3(A)). After an operating period of one day, the maximum cathode-based geometric CH₄ production rates for the BESs with the graphite-rod, the thermally activated graphite felt, the activated-carbon anode were 18.97 ± 2.84, 25.13 ± 2.34, and 26.75 ± 2.38 L m⁻² d⁻¹, respectively (Table 1). This resulted in a maximum volumetric CH₄ production rate of 0.1 ± 0.001 L L⁻¹ d⁻¹ for the BES with the activated-carbon anode. Coulombic efficiencies of 97.96 ± 8.71% for the BES with the activated-carbon anodes suggest an efficient H₂ uptake by the microbes at the cathode (Fig. 3).

By adding soluble Fe²⁺ to thermally activate-graphite-felt and activated-carbon anodes at 60 °C with *M. thermautotrophicus* ΔH, we achieved a higher maximum cathode-based geometric CH₄ production rate of 27.48 ± 0.26 and 27.30 ± 0.29 L m⁻² d⁻¹, respectively, resulting in a volumetric CH₄ production rate of 0.11 L L⁻¹ d⁻¹ for both and a higher Coulombic efficiency of 100.61 ± 0.01% and 99.36 ± 0.57% with the added soluble Fe²⁺ than without (Table 1 and Fig. 3(A)). However, with magnetite-coated activated-carbon anode material, the methane production was lower compared to activated-carbon anode material. The maximum cathode-based geometric CH₄ production rate was 27.15 ± 0.65 L m⁻² d⁻¹ m with a Coulombic efficiency of 99.40 ± 0.02% (Table 1 and Fig. 3).

To compare the different experimental conditions in our study, we choose an empirical cathode-based geometric CH₄ production rate of >25 L m⁻² d⁻¹ to determine the duration of the optimum-performance period for each treatment. Under this definition of the optimum performance period, the graphite-rod anode never reached this CH₄ production rate, resulting in an optimum performance period of zero (Table 1). We achieved an optimum-performance period of 1 day for the thermally activated-graphite-felt anode. After an operating period of two days, the cathode-based geometric CH₄ production rates for the BESs with the activated-carbon anode was 26.44 ± 1.40 L m⁻² d⁻¹ after which it decreased, resulting in an optimum-performance

period of two days (Table 1). By adding soluble Fe²⁺ to thermally activated-graphite-felt and activated-carbon anodes, the optimum-performance period was elongated to two and three days at an average cathode-based geometric CH₄ production rate of 26.17 ± 0.29 and 26.36 ± 0.84 L m⁻² d⁻¹, respectively (Table 1). However, with magnetite, the optimum performance period was shortened to two days at an average cathode-based geometric CH₄ production rate of 25.81 ± 1.01 L m⁻² d⁻¹, which is one day shorter than for the activated-carbon anodes with soluble Fe²⁺ (Table 1). For the activated-carbon anodes as an example, the pH remained between 7.3 and 7.8 (Fig. S1, ESI[†]), and CO₂ was never limited (Fig. S2, ESI[†]).

We achieved a maximum cathode-based geometric CH₄ production rate of 27.48 L m⁻² d⁻¹ with thermally activated graphite felt and 0.1 g L⁻¹ soluble Fe²⁺, which was slightly higher than Kracke *et al.*,⁴ who achieved a maximum of 26.76 L m⁻² d⁻¹ at a cathode-based geometric current density of 1 mA cm⁻². The authors utilized a mesophilic methanogen (*i.e.*, *Methanococcus maripaludis*) in a BES with membranes and a NiMo cathode. However, the reported maximum volumetric CH₄ production rate by Kracke *et al.*⁴ was 1.38 L L⁻¹ d⁻¹, which was 12.5 times higher than the 0.11 L L⁻¹ d⁻¹ for our study due to a more optimum electrode-surface-to-reactor-volume ratio. An even higher volumetric CH₄ production rate of 2.9 ± 1.2 L L⁻¹ d⁻¹ compared to Kracke *et al.*⁴ was achieved by Baek *et al.*,²⁷ using a zero-gap electrochemical cell. Despite its lower geometric CH₄ production rate of 18.25 L m⁻² d⁻¹ and side-products of acetate and propionate (at a cathode-based geometric current density of 1.74 mA cm⁻²),²⁷ the zero-gap electrochemical cell has an optimized electrode-surface-to-reactor-volume ratio and has the propensity to increase the production rates for microbial electrosynthesis, including for our system. This promise was already shown by Geppert *et al.*²⁸ They achieved a higher volumetric CH₄ production rate of 12.5 L L⁻¹ d⁻¹ and a cathode-based geometric CH₄ production rate of 62.5 L m⁻² d⁻¹ by recirculating anolyte and catholytes through a zero-gap design at an applied current density of 3.5 mA cm⁻². However, a large amount of biomass was used as an inoculum, making it arguable that all carbon came from CO₂.

Noteworthy is the considerably lower volumetric CH₄ production rates for all BES studies compared to gas fermentation by sparging H₂ and CO₂, for which CH₄ production rates of 688 L L⁻¹ d⁻¹ (using the standard molar volume of CH₄ from 1.28 mol L⁻¹ h⁻¹) had already been achieved in the 1990s.²⁹ It is clear that several breakthroughs are necessary to close the gap between microbial electrosynthesis and gas fermentation for CH₄ production. Regardless, our proof-of-concept was successful for which we could produce a cathode-based geometric CH₄ production rate of 27.48 L m⁻² d⁻¹ with our membrane-less BES with sacrificial anodes.

The duration of methane production in the single-chamber bioelectrochemical system was only a few days due to oxidation of reduced sulfur compounds at the anode and a resulting sulfur limitation

Our abiotic O₂ measurements with graphite-rod anodes showed O₂ production at 60 °C (Fig. 2(D)), identifying that O₂ inhibition

— Graphite rod (1.76 cm²) — 2x2 cm thermally activated graphite felt — 2x2 cm thermally activated graphite felt with 0.1 g·L⁻¹ Fe
 — Activated carbon (1.57 cm²) — Activated carbon with 0.1 g·L⁻¹ Fe (1.57 cm²) — Magnetite coated activated carbon (1.57 cm²)

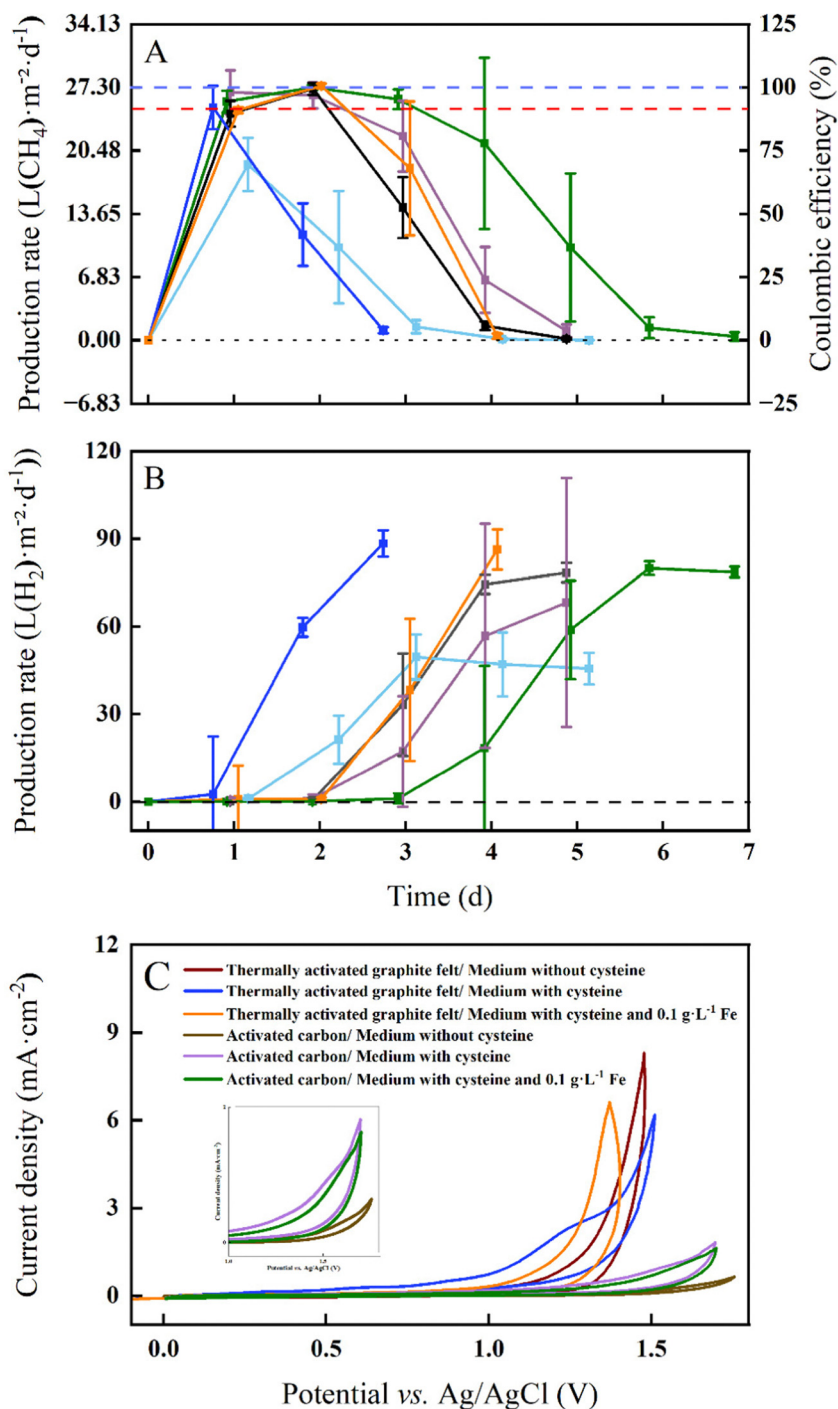


Fig. 3 Membrane-less BES performance for electromethanogenesis and cyclic voltammetry analysis with L-cysteine: (A) CH₄ production rates corrected to the cathode surface area and Coulombic efficiencies (at $i = 10 \text{ A m}^{-2}$); (B) H₂ production rate corrected to the cathode surface area during batch experiments over time with the thermophilic archaeon *M. thermautotrophicus* ΔH . Graphite-rod, thermally activated graphite felt and activated-carbon anodes were included with two treatments and three treatments for thermally activated graphite felt and activated carbon, respectively, including iron additions (soluble iron and magnetite). The error bars show the standard deviation for the average data from triplicate systems. For (A) and (B) Carbon cloth was used as the cathode: (Y-axis 1) cathode-based geometric CH₄ production rates and H₂ production rates for six treatments; and (Y-axis 2) for (A) Coulombic efficiencies for six treatments. After reaching a maximum H₂ production rate, we stopped the current to not accumulate excessive amounts of H₂ in our BESs. While the blue-dotted line represents 100% Coulombic efficiency at a 27.30 L m⁻² d⁻¹ methane production rate, the red-dotted line shows the empirical cathode-based geometric CH₄ production rate of >25 L m⁻² d⁻¹ to determine the duration of the optimum performance period; and (C) cyclic voltammograms of thermally activated graphite felt and activated carbon at a scan rate of 5 mV s⁻¹ in MS-medium. In total 6 cyclic voltammograms were recorded where the MS-medium for each carbon-based electrode contained L-cysteine without soluble Fe²⁺; L-cysteine with soluble Fe²⁺; and without L-cysteine and without soluble Fe²⁺.

Table 1 Performance data of the carbon-based anodes

Carbon-based anode	Maximum geometric CH ₄ production rate in L m ⁻² d ⁻¹	Maximum volumetric CH ₄ production rate in L L ⁻¹ d ⁻¹	Optimum performance period in d
Graphite rod	18.97 ± 2.84	0.07 ± 0.01	0
Thermally activated graphite felt	25.13 ± 2.34	0.10 ± 0.009	1
Thermally activated graphite felt with 0.1 g L ⁻¹ of Fe ²⁺	27.48 ± 0.26	0.11 ± 0.001	2
Activated carbon	26.75 ± 2.38	0.10 ± 0.009	2
Activated carbon with 0.1 g L ⁻¹ of Fe ²⁺	27.30 ± 0.29	0.11 ± 0.001	3
Magnetite-coated activated carbon	27.15 ± 0.65	0.11 ± 0.002	2

to the thermophilic methanogen was a reason for a zero-day optimum-performance period during our BES experiment with graphite-rod anodes (Fig. 3(A)). The thermally activated-graphite-felt anodes and activated-carbon anodes during abiotic experiments exhibited no O₂ production after an operating period of five days (Fig. 2(D)), explaining the longer optimum-performance period for these anodes than the graphite-rod anodes (Fig. 3(A)). Still, we could only maintain a longest optimum-performance period of three days for the BES with activated-carbon anodes and soluble Fe²⁺ (Table 1). By comparing the CH₄ production rate (Fig. 3(A)) with the H₂ production rate (Fig. 3(B)), we observed different onsets of H₂ production after the CH₄ production had peaked for graphite-rod, thermally activated-graphite-felt, and activated-carbon anodes (with and without iron). This indicated that the electrochemical system was not limiting (H₂ production did not stop). Thus, carbon oxidation had not diminished the available carbon at the anode to maintain a working electrochemical system.

This also became clear when we increased the size of the anode surface areas and observed a similar optimum-performance period of one day for each of the BESs with the 1 × 1 cm-, 1 × 2 cm-, and 2 × 2 cm-thermally activated-graphite-felt anodes and with L-cysteine as the sulfur source and reducing agent in our growth medium (Fig. S3, ESI†). While the larger electrode provided a larger surface area for the carbon oxidation to occur and a more stable cell voltage (Fig. S4, ESI†), it did not improve the performance. Such a similar performance showed that, indeed, the carbon material was not limiting but that something else was limiting the methanogens to produce CH₄. Without a membrane, L-cysteine oxidizes to L-cystine,³⁰ which may render L-cysteine unavailable as a sulfur source and reducing agent. Therefore, we investigated whether the relatively fast oxidation of reducing sulfur components in the growth medium would diminish our sulfur source for methanogenic growth and activity.

Instead of L-cysteine, we added 0.1 g L⁻¹ Na₂S as a sulfur source and reducing agent to our treatment for the BESs to have a measurable sulfur source and a more potent reducing agent to lower the oxygen redox potential (ORP) without harming the microbes.³¹ We used thermally activated-graphite-felt anodes with 0.1 g L⁻¹ Fe²⁺ because this resulted in the maximum cathode-based geometric CH₄ production rate (Table 1). However, we increased the anode size from 1 × 1 to 2 × 2 cm and also increased the number of methanogenic cells during inoculation by 10 times compared to previous experiments. We compared the treatment with Na₂S and soluble Fe²⁺ to the

control with L-cysteine and soluble Fe²⁺, and obtained a similar: (1) CH₄ production pattern; and (2) optimum-performance period of two days compared to previous results (Fig. 3(A)), and between the treatment and the control (Fig. S5A, ESI†).

To determine whether sulfide was oxidized and limiting the methanogens in our BESs, the sulfide concentration of each sampling point was measured for the treatment BESs through a photometric assay. The sulfide concentration decreased rapidly after the first day, proving that sulfide was removed, likely by oxidation (Fig. S5B, ESI†). After three days, sulfide was nearly depleted (Fig. S5B, ESI†). In addition, the ORP value increased from -375 mV to -100 mV showing that the reducing power of sulfide was removed at the same time (Fig. S5C, ESI†). These results suggest that the previous experiments were all limited in sulfur compounds, such that the sulfur source and/or the reducing power became limiting to the methanogens (Table 1).

A potential inhibiting factor for *M. thermautotrophicus* ΔH is an ORP value that is not negative enough to provide reducing power. In fact, electromethanogenesis would already be inhibited at a minimum ORP of -200 mV.³² Because both sulfur compounds were oxidized during the BES operating conditions, the reducing power and, subsequently, the ORP value for methanogenesis should worsen. To find out whether the depletion of the sulfur source or the increase in the ORP due to the absence of the reducing agent limited the methanogens after oxidation of reduced sulfur compounds, we added another treatment. Besides the Na₂S and soluble Fe²⁺, we added Ti-NTA, L-cysteine, and soluble Fe²⁺. In fact, we introduced Ti-NTA at the beginning of the experiment and after every sampling point. However, no difference in the cathode-based geometric CH₄ production rate was observed between Ti-NTA and the control (L-cysteine) (Fig. S5A, ESI†). In addition, the ORP values were similar throughout the operating period and had crossed the minimum value of -200 mV between Day 1 and Day 3 (Fig. S5C, ESI†). Thus, adding Ti-NTA did not lower the ORP because Ti³⁺ was also oxidized at the anode, preventing its reducing power from being effective. Therefore, we could not distinguish whether the depletion of the sulfur source or the increase in the ORP due to the absence of the reducing agent limited the methanogens.

Regardless, reduced sulfur compound was the limiting factor of the single-chamber BES. Therefore, the recovery of sulfide *in situ* after sulfur oxidation is a desirable objective to circumvent the continuous supply of sulfide to the electrochemical system. For a recent study by Izadi *et al.*,³³ sulfide was oxidized at the anode to elemental sulfur after which the sulfide

was recovered at the cathode by switching the polarity of the electrodes. Based on their study, we performed a BES experiment using thermally activated graphite felt as both anode and cathode while adding $0.1 \text{ g L}^{-1} \text{ Na}_2\text{S}$ as an additional sulfur source. The polarity of the electrodes was switched every 4 h to reduce the elemental sulfur to sulfide. However, our study did not have a desirable outcome because the cathode-based geometric CH_4 production rate was lower than in all other BES experiments, possibly due to a stressed environment (Fig. S6A, ESI†). In addition, the sulfide concentration was depleted faster, limiting CH_4 production (Fig. S6B, ESI†). We cannot rule out that sulfide was oxidized to higher charged sulfur oxides, such as sulfate or thiosulfate, which are more difficult to reduce back to sulfide, preventing the capability to recover sulfide.

Soluble iron elongated the optimum-performance period for reasons that are related to sulfide oxidation

We performed cyclic voltammetry (CV) measurements with two carbon materials at the anode in an abiotic experiment with 6 treatments of which with and without *L*-cysteine and with and without soluble Fe^{2+} were included (Fig. 3(C)). We were interested in observing the onset potential of the oxidation of reduced sulfur compounds during the forward electrochemical scan (5 mV s^{-1}). The thermally activated graphite felt with *L*-cysteine and without soluble Fe^{2+} , showed the earliest onset potential of the six cyclic voltammograms and an electrochemical shoulder with a mid-point potential of $+1.25 \text{ V vs. Ag/AgCl}$ (Fig. 3(C)). The resulting faster oxidation of *L*-cysteine rate, explains why the optimum-performance period for the BES was the shortest between the thermally activated graphite felt and activated carbon anode treatments (one day in Table 1). Adding soluble Fe^{2+} to the thermally activated graphite felt anode with *L*-cysteine clearly shifted the onset potential to a higher voltage (Fig. 3(C)), reducing the oxidation of *L*-cysteine rate in our BES, and explaining the longer optimum-performance period (two days in Table 1). The no-*L*-cysteine control (*i.e.*, no-sulfur control) shifted the onset potential further to a higher voltage, which was anticipated (Fig. 3(C)).

Even though the current densities for the three cyclic voltammograms with activated carbon were approximately four times lower than with thermally activated graphite felt (Fig. 3(C)), we observed the same order of first onset potentials (*L*-cysteine without soluble Fe^{2+} ; *L*-cysteine with soluble Fe^{2+} ; and without *L*-cysteine and without soluble Fe^{2+} [control]). We found a mid-point potential of $+1.5 \text{ V vs. Ag/AgCl}$ with the activated carbon with *L*-cysteine and without soluble Fe^{2+} (Fig. 1(C)). The higher mid-point potential of *L*-cysteine oxidation ($1.5 \text{ vs. } 1.25 \text{ V}$) and the lower current densities explain why the activated carbon with *L*-cysteine but without iron showed a longer optimum-performance period for the BES compared to the thermally activated graphite felt (two days *vs.* 1 day in Table 1) – the slower *L*-cysteine oxidation rate elongated the growth period of methanogens. The addition of soluble Fe^{2+} to the activated carbon with *L*-cysteine, showed the same result as with thermally activated graphite felt: (1) a slower onset potential; and (2) a higher mid-point potential ($1.6 \text{ V vs. Ag/AgCl}$

in Fig. 3(C)), explaining the higher optimum-performance period (three days in Table 1). Thus, the addition of soluble Fe^{2+} , reduced the *L*-cysteine oxidation rate.

We suspect that the formation of iron sulfide (FeS) in the electrolyte and/or at the anode slowed the oxidation of reduced sulfur compounds, allowing the methanogens a longer growth period before the sulfur source became limiting. Indeed, the activated carbon-based anodes with soluble Fe^{2+} showed a decreased overall iron concentration throughout time (Fig. S7, ESI†). The initial iron concentration was 0.1 g L^{-1} , continuously decreasing until it stabilized after three days (Fig. S7, ESI†). In addition, we observed the precipitation of FeS, which persisted as a black precipitate. The removal of sulfide through FeS is a desired outcome in water treatment.³⁴ Fortunately, it has been shown to benefit *M. thermautotrophicus* ΔH by improving CH_4 production after adding Fe.³⁵ Here, the formation of FeS benefited the microbe by lowering the oxidation of reduced sulfur compounds rate. However, FeS is still redox active with sulfide oxidation as an ultimate result, explaining that the maximum optimum-performance period was still only three days (Table 1).

Magnetite, which is an alternative redox mediator to soluble iron, shortened the optimum performance period

The cyclic voltammogram of synthesized magnetite nanoparticles that were immobilized on an Au electrode featured two peaks with a peak splitting of $+0.28 \text{ V}$, representing the oxidative peak at $-0.12 \text{ V vs. Ag/AgCl}$ and the reductive peak at $-0.41 \text{ V vs. Ag/AgCl}$ (Fig. 4(A)). The comparison of the standard potential of both magnetite-oxidation reactions with the literature exhibited that the two-electron oxidation of magnetite to maghemite (eqn (4)) occurred for our system.³⁶ Roberts *et al.*³⁷ had shown that magnetite is prone to develop this irreversible reaction, which would have a negative impact on long-duration BES experiments. Indeed, the cyclic voltammograms of bulk magnetite showed decreasing reaction rates with increasing cycles (Fig. 4(B)), which can be explained by the formation of maghemite (eqn (4)).

To quantify the reaction rates, Tafel slopes were calculated from bulk magnetite during different cycles of the cyclic voltammogram (ESI,† Note S1 and Fig. 4(B)). Bulk magnetite electrodes achieved 187 mV dec^{-1} at cycle 5. It transitioned to 617 mV dec^{-1} and 1310 mV dec^{-1} at cycles 35 and 80, respectively (Fig. 4(B)). The formation of maghemite increased the inner resistance of the anode material to decrease its reaction rate by forming a resistor-type cyclic voltammogram (Fig. 4(B)), which likely would constrain the BES. This is one possible reason why we observed the shorter optimum performance period of two days *vs.* three days for magnetite-coated activated carbon anodes and activated-carbon anodes, respectively. However, more work would be necessary to exclude other possible reasons.

When sulfur source limitations are overcome, carbon at the anode would become a limiting factor

The oxidation and the removal of the carbon anode itself due to its sacrificing nature, would likely be the next limiting factor of

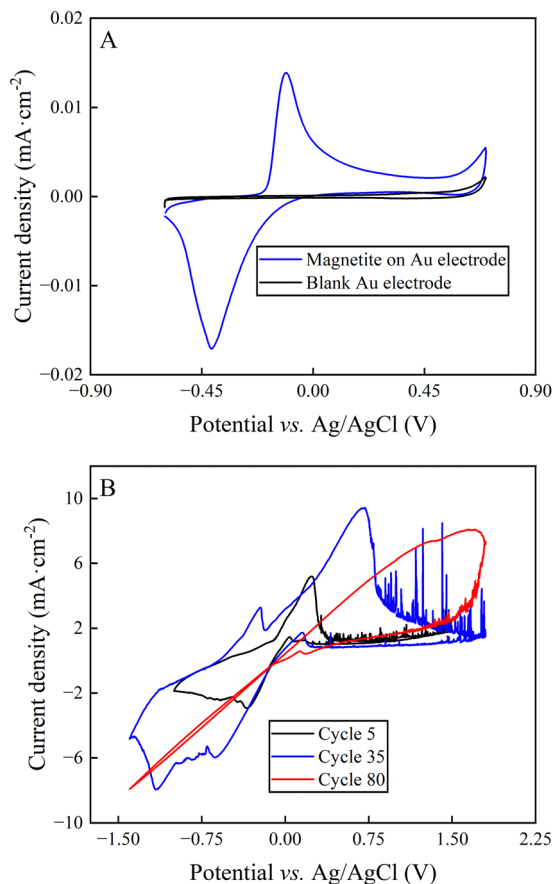


Fig. 4 Electrochemical analysis of magnetite: (A) cyclic voltammogram of magnetite nanoparticles that were drop-casted on an Au electrode at a scan rate of 20 mV s^{-1} in 66 mM phosphate buffer; and (B) cyclic voltammograms of bulk magnetite at cycle 5, 35, and 80 at a scan rate of 20 mV s^{-1} in 50 mM PBS.

our BES due to a lack of accessible carbon to be oxidized. Our proof-of-concept BESs used relatively small geometric anode surfaces of 1.57 cm^2 . For our calculation, we used the ideal reaction of donating four electrons and producing CO_2 during carbon oxidation (eqn (1)). To calculate the radius change (Δr) during the two-day optimum performance period of the activated carbon anode (as one example anode), we first calculated the volume (V) of carbon that was consumed (eqn (5)–(8)), which was equivalent to $1.10 \times 10^{-2} \text{ cm}^3$ ($8.95 \times 10^{-4} \text{ mol}$ carbon), using the equation of the Coulombic efficiency.⁴ The exposed surface of the activated carbon anode corresponded to a halved cylinder so that the volume after the optimum performance period and its corresponding radius change would be:

$$V_{\text{after optimum performance}} = V_{\text{start}} - V_{\text{consumed}} = \frac{1}{2} \cdot \pi \cdot r_{\text{start}}^2 h - 1.10 \times 10^{-2} \text{ cm}^3 \quad (5)$$

$$\frac{1}{2} \cdot \pi r_{\text{after optimum performance}}^2 h = V_{\text{start}} - V_{\text{consumed}} \quad (6)$$

$$r_{\text{after optimum performance}} = \sqrt{\frac{(V_{\text{start}} - V_{\text{consumed}}) \cdot 2}{\pi \cdot h}} \quad (7)$$

$$\Delta r = r_{\text{start}} - r_{\text{after optimum performance}} \approx 34 \mu\text{m} \quad (8)$$

With $r_{\text{start}} = 0.475 \text{ cm}$ and $h = 2.175 \text{ cm}$. The relatively small change in the radius of $34 \mu\text{m}$ shows that the accessible carbon did not limit the system's performance yet. We could not determine when the carbon would become limiting due to the sulfur source limitations. If this occurs, the accessibility of carbon should be increased. This can be achieved by adding more carbon after increasing the ratio of anode surface area to reactor volume or improving the reactivity of the carbon. In addition, anodes could be replaced periodically.

A final limitation would be the impact of carbon corrosion on the CH_4 production rates

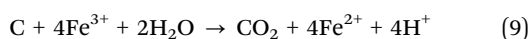
We observed that the activated carbon-based electrodes started to disintegrate, and small carbon particles were found in suspension (Fig. S8, ESI†) that might impact the CH_4 production rate during long-term operating conditions (considerably longer than three days). We refer to this as carbon corrosion, which could impact the CH_4 production rate mostly negatively due to: (1) the exfoliation of carbon material at the anode, limiting carbon oxidation; and (2) the toxicity of a tar-like solution to methanogens. On the other hand, there is a mechanism known from abiotic carbon oxidation systems that could improve CH_4 production, which we refer to as indirect carbon oxidation by Fe^{3+} (described below). Therefore, we examined carbon corrosion by investigating the surface and the bulk of the anodes with FTIR to track the change of functional groups exhibited at the carbon material. We used the activated-carbon anodes from our abiotic experiments during the measurements of the liquid O_2 concentration (no soluble iron was added).

Several oxidized functional groups from the initial activated carbon material, such as ketones and phenol groups, were identified by the $\text{C}=\text{O}$ stretching bond at $1700\text{--}1800 \text{ cm}^{-1}$ and --OH stretching bonds at $3300\text{--}3600 \text{ cm}^{-1}$, respectively (Fig. S9, ESI†). The absorbance peak at $2500\text{--}3000 \text{ cm}^{-1}$ represented the C--H stretching bond of the paraffin oil, which we had added to produce the anodes. The larger absorbance of --OH bonds suggested an alkaline chemical activation of the carbon from the manufacturer. Almost all the --OH stretches disappeared after five days of anode oxidation. The phenol functional group can act as a catalyst for carbon oxidation and facilitate the CO_2 reaction at the anode. Once the functional group was consumed, the electrode exfoliated in small carbon particles.

While small concentrations of carbon particles in solution might not have a big influence, higher concentrations have been shown to influence methanogenesis. Cavalcante *et al.*³⁸ identified that adding conductive material of carbon particles to a culture of methanogens enhanced methanogenesis. However, inhibition of methanogenesis occurred even at lower carbon material concentrations when the inoculation was performed at a relatively low cell density. In addition, Umetsu *et al.*³⁹ showed that *M. thermotrophicus* ΔH adsorbed on --OH

and –COOH functional groups and prevented hydrogen or mineral uptake, inhibiting methanogenesis.

We also found that carbon corrosion and the reaction of the released carbon with Fe^{3+} (eqn (9)) could explain another stimulation of the CH_4 production rate besides: (1) reducing the oxidation of reduced sulfur compounds rate due to FeS formation; and (2) the presence of conductive particles. Iron would need to be present in our membrane-less BES for this other stimulation, and we refer to this mechanism as indirect carbon oxidation by Fe^{3+} . The continuous addition of soluble Fe^{2+} stimulated abiotic carbon oxidation systems because Fe^{2+} is directly reduced at the carbon-based anode to Fe^{3+} (eqn (3)). However, even without continuous soluble Fe^{2+} addition, a current increase can be anticipated due to the circular nature of the electron-mediating process, with the ultimate electron donor coming from the carbon-based anode material than the continuously added Fe^{2+} . This is due to indirect carbon oxidation by Fe^{3+} using carbon in the solution that originated from carbon corrosion at the anode (Fig. 5). Indirect carbon oxidation reduces Fe^{3+} back to Fe^{2+} in the solution, while carbon is oxidized to CO_2 (eqn (9) and Fig. 5). The reactions of the electron-mediating process can be described as follows:



Because the reduction and oxidation of soluble iron species occur at the anode and with carbon in solution in the electrolyte, respectively, there is a continuous reformation of Fe^{2+} to maintain a higher current density for the electrochemical cell. An advantage of the circular nature of this electron-mediating process is that Fe^{3+} is oxidized in the electrolyte with carbon and not at the cathode, which, as a competing process, would have reduced the Coulombic efficiency for methane production.

We do not know whether carbon corrosion would have positive or negative effects on the CH_4 production rate and the duration of the optimum-performance period for our BES. We would first need to solve the reduced sulfur compound oxidation problem. Likely, there may be an initial positive effect when carbon corrosion is only starting to occur, but when more and more carbon particles accumulate, we may observe a negative effect of carbon corrosion. Therefore, measures should be taken to reduce the negative effects of carbon corrosion on the anode activity and microbial activity to lengthen the optimum performance period of anode oxidation with sacrificial anodes.

Carbon oxidation with sacrificial anodes for single-chamber BES is ready for research purposes within the field of microbial electrosynthesis

We showed that implementing carbon oxidation with sacrificial anodes in a single-chamber BES can perform microbial electrosynthesis. We cultivated *M. thermotrophicus* ΔH with *in situ* produced H_2 at the cathode under constant pH and temperature conditions to produce CH_4 for an optimum performance period of three days. The growth behavior followed a similar trend for all BESs until the amount of sulfur source limited the

CH_4 production rates. Our maximum cathode-based geometric CH_4 production rate was already compatible with other studies due to similarly set current densities.⁴ Further optimizations of our system should not only increase the geometric CH_4 production rate but also prolong the production days to several weeks. With the relatively low current densities of microbial electrosynthesis, our system is already useful for research purposes because the sulfur source will not become limiting that fast with lower current densities. Our work can also inform the earlier studies with a single-chamber BES in the field of perchlorate removal.²⁰ We advise the authors to replace the graphite anode materials with activated-carbon anode materials and to add soluble iron to increase the performance.

Before the industrial application of carbon oxidation with sacrificial anodes in BES for microbial electrosynthesis can commence, several breakthroughs are required

Our system would have a considerably lower theoretical power consumption than membrane-based two-compartment cells due to the lower potential to operate the BES (Fig. S4 and S10, ESI[†]). After optimizing the single-chamber BES and making it continuous, a direct comparison between the production rates and power consumption rates should be performed with a conventional membrane-based cell for microbial electrosynthesis. Another advantage of the single-chamber cell compared to a membrane-based cell would be the lower capital costs due to the absence of ion-exchange membranes, albeit a full techno-economic analysis would be necessary to be conclusive. These advantages make our system a desirable opportunity for scale-up. However, several problems must be overcome.

We must prolong the optimum performance period to several months rather than a few days before scale-up can commence. We observed the limiting factor of sulfur source availability in our membrane-less BES, which had a promising current density. Utilizing a microbe that is not reliant on a redox-active sulfur compound as either a sulfur source for growth or to provide reducing power would be one route to overcome the utilization of a single-chamber BES. One possibility is to grow the microbes with thiosulfate; however, a considerably slower growth rate may be problematic. If this problem can be overcome, we predict two additional limitations for our membrane-less BES: (1) the availability of accessible carbon; and (2) carbon corrosion. Because carbon gets consumed over time, innovative BESs must be designed to refill the consumed carbon at the anode.

Undoubtedly, carbon corrosion would inhibit the growth of microbial cells during operating periods of several weeks, depending on the current densities. In addition, carbon corrosion would introduce a higher content of –OH, –C=O, and –COOH functional groups, increasing the charge transfer resistance of the carbon material and decreasing the electrochemical performance.⁴⁰ Consequently, the carbon anode decreases its conductivity and current density, while deteriorating. Ideally, carbon corrosion is avoided by efficiently transforming carbon into CO_2 or CO. Studies to mitigate carbon corrosion currently tend to use either expensive catalysts to protect the carbon

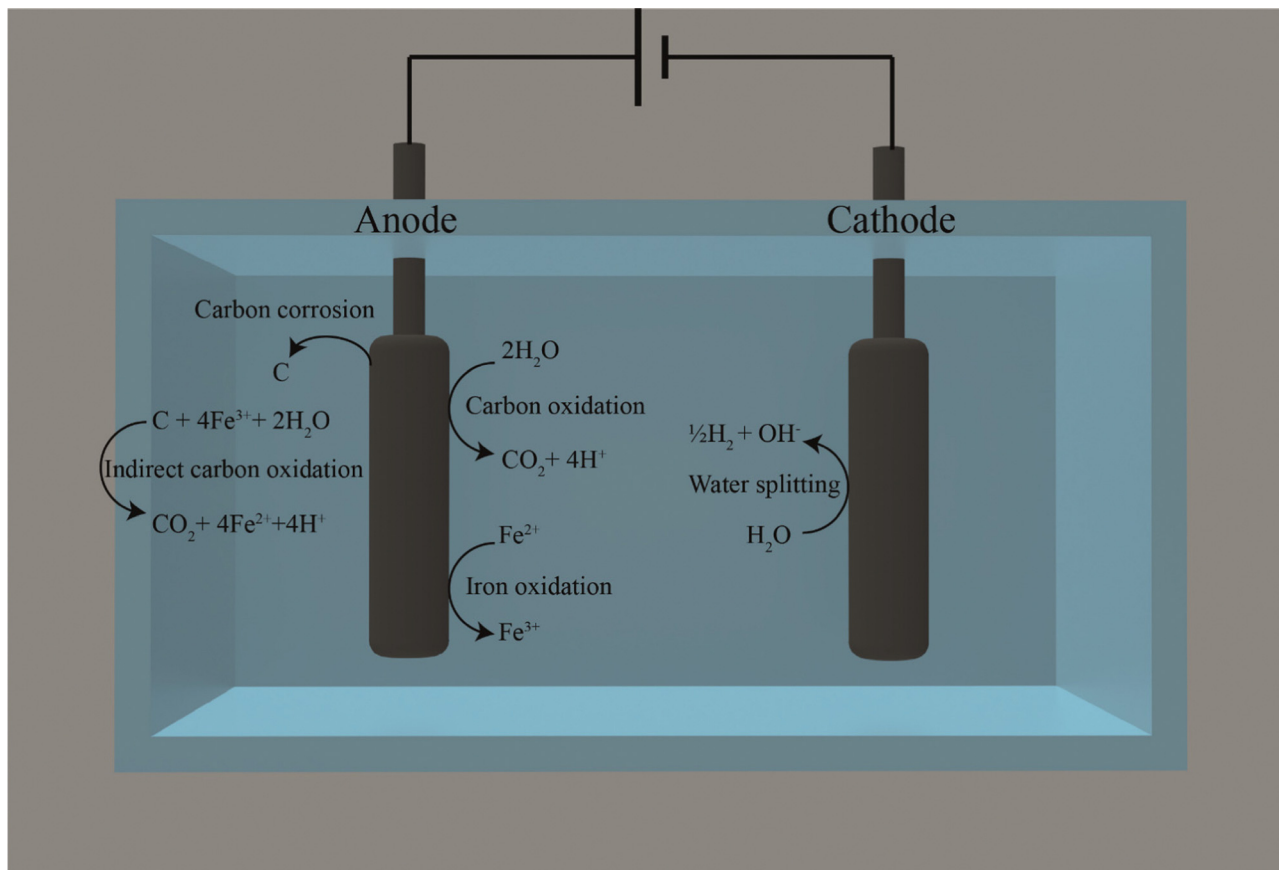


Fig. 5 Overview of the reactions that occur at the anode and cathode during the carbon oxidation using thermally activated graphite felt and activated carbon anodes with 0.1 g L^{-1} of Fe^{2+} . Water splitting takes place at the cathode to produce H_2 . The main reaction at the anode is carbon oxidation, followed by the oxidation of Fe^{2+} and indirect carbon oxidation by the formed Fe^{3+} . For more information, see section on the impact of carbon corrosion on the CH_4 production rates.

material or structurally stronger carbon, such as graphene or carbon nanotubes.⁴¹ In our case, excessive carbon corrosion has to be avoided, and a continuous system rather than our batch system could remove the by-products. Furthermore, mesoporous carbon would enlarge the surface area and the porosity, allowing more reaction sites for carbon oxidation rather than carbon corrosion.

Conclusion

We have proven the concept that microbial electrosynthesis is possible in a BES without membranes by utilizing carbon oxidation with sacrificial anodes. Our BES produced CH_4 with an oxygen-sensitive thermophilic methanogen at a cathode-based geometric current density of 1 mA cm^{-2} for 3 days after which reduced sulfur compounds became limiting in the growth medium due to sulfur oxidation at the anode. The system is ready for microbial electrosynthesis experiments with relatively low current densities to perform basic research. However, for industrial applications, several breakthroughs are necessary to overcome limitations at the anode, such as sulfur oxidation, refilling of carbon, and protecting against carbon corrosion.

Experimental section

Chemicals, strain, and medium

All chemicals were used as received unless otherwise noted in the text. These chemicals were of technical or analytical grade and were purchased from Sigma-Aldrich (St. Louis, USA), Alfa Aesar (Haverhill, USA), Merck (Darmstadt, Germany), Thermo-Fischer (Waltham, USA), VWR (Radnor, USA), and Carl Roth (Karlsruhe, Germany). The strain *M. thermotrophicus* ΔH (DSM 1053) was obtained from the DSMZ (Braunschweig, Germany). A pre-culture was grown at $60 \text{ }^\circ\text{C}$ in 100 mL serum bottles with 20 mL of modified anaerobic MS-Medium³¹ containing (per liter): 6.77 g $NaHCO_3$; 0.17 g K_2HPO_4 ; 0.235 g $(NH_4)_2SO_4$; 0.09 g $MgSO_4$; 0.06 g $CaCl_2 \times 2 H_2O$; 0.23 g KH_2PO_4 ; 1 mL trace elements (10 \times); 1 mL of 4 M H_2SO_4 ; 0.5 g L-cysteine hydrochloride. The trace-element solution was a 10 \times stock solution containing (per 100 mL): 0.2 g nitrilotriacetic acid; 3 g $MgSO_4 \times 7 H_2O$; 0.5 g $MnSO_4$; 0.3 g $FeSO_4 \times 7 H_2O$; 0.11 g $CoSO_4 \times 7 H_2O$; 0.068 g $CaCO_3$; 0.18 g $ZnSO_4$; 0.01 g $CuSO_4 \times 5 H_2O$; 0.018 g $KAl(SO_4)_2 \times 12 H_2O$; 0.01 g H_3BO_3 ; 0.01 g $Na_2MoO_4 \times 2 H_2O$; 0.48 g $(NH_4)_2Ni(SO_4)_2 \times 6 H_2O$; 0.01 g $Na_2WO_4 \times 2 H_2O$; 0.01 g Na_2SeO_4 . The trace-element solution was adjusted to a pH value of 1 with H_2SO_4 . The MS-Medium

was buffered only in the bioelectrochemical system by adding 2.5 M 3-(*N*-morpholino)propanesulfonic acid (MOPS) at pH = 7.2 for a final media concentration of 25 mM. 25 mM Ti-NTA was prepared according to Moench *et al.*⁴² All solutions were sterilized either through a sterile filter or autoclaved and made anaerobic by sparging with N₂ or N₂/CO₂.

Preparation of carbon-based electrodes

The activated carbon served not only as active material but also as a conductive and surface enlarging material and was used as purchased (~100 mesh particle size (~150 μm), DARCO[®], Cabot Norit Americas Inc, Marshall, USA). The activated carbon and paraffin oil (Sigma-Aldrich) was homogeneously mixed in a mortar at 70%:30% to form a paste.⁴³ The resulting paste was pelleted into a self-made electrode holder and cured in an 80 °C vacuum oven for 4 h. Activated-carbon-associated magnetite was synthesized through a co-precipitation method by mixing activated carbon with 2 M FeCl₃ and 1 M FeCl₂.⁴⁴ Then, 20% NH₄OH was slowly dropped into the solution until pH 9. The solution was stirred for 1 h to complete the synthesis of magnetite. The precipitate was centrifuged, cleaned with deionized water until pH 7, and dried in a vacuum oven at 80 °C for 4 h. Different amounts of activated carbon to magnetite were used during the synthesis ranging from 0% to 60% of activated carbon. In this study, activated carbon that was co-precipitated with magnetite is called magnetite-coated activated carbon (ESI[†]). The 60% activated carbon and 40% magnetite mixture was synthesized by adding 60% activated carbon and 40% magnetite mixture into an aerated oven at 80 °C for 24 h.

Measurement of dissolved O₂

The O₂ measurements were carried out in a self-designed five-neck round flask. To measure the dissolved O₂, an O₂-sensitive foil (0–100% O₂, PreSens Precision sensing, Regensburg, Germany) was glued at the mid-height of the flask. The electrochemical cell was operated as a two-electrode setup with a 1 × 1 cm carbon cloth electrode as the cathode. A platinum wire, a graphite rod, a thermally activated graphite felt, a carbon cloth, activated carbon, and activated carbon that was coated with magnetite were used as anodes. Thermally activated graphite felt and activated carbon anodes were used with addition of soluble iron. The measurements were carried out in 0.066 M phosphate buffer at room temperature and 60 °C. The phosphate solution was buffered at 7.2 to mimic the pH of the MS medium used in the bioelectrochemical system. Before each experiment, the cells were purged with N₂ gas for 1 h to secure an O₂-free solution.

Sample analyses

The bioelectrochemical systems were sampled once per day. The gas compositions of the bioelectrochemical systems were sampled with a 500 μL gastight syringe (Hamilton, Reno, USA) and analyzed using a gas chromatograph (SRI GC, Torrance, USA). The gas chromatograph used a Haysep D column (length 3 m, outer diameter 1/8", SRI GC) and a Molsieve 13X column (length 3 m, outer diameter 1/8", SRI GC). It was equipped with

a thermal coupled detector and a flame ionization detector to measure N₂, O₂, H₂, and CO₂, and CH₄, respectively. N₂ and H₂ were used as carrier gas. Coulombic efficiencies for CH₄ were calculated according to Kracke *et al.*⁴ Cell growth was measured by cell counting with a light microscope (X41, Olympus, Shinjuku, Japan). The anodes were collected after the experiment and stored anoxically at –20 °C for further analyses. The outer layer and the bulk of magnetite particles were analyzed through a sequential extraction. First, the outer layer of magnetite particles was dissolved by acidifying with 1 M HCl for 1 h. It was followed by a complete dissolution of the magnetite particle by acidifying with 6 M HCl for 24 h. The iron content from the liquid samples and the oxidation state of iron in the magnetite electrodes were further analyzed *via* the Ferrozine assay.^{44,45} Sulfide concentrations were determined photometrically based on a modified version of Cline and Gilbo-Garber.^{46,47} Sulfide samples were stabilized with Zn(ac)₂ and stored at –20 °C. The diamine reagent (*N,N*-dimethyl-*p*-phenylenediamine sulfate salt and FeCl₃) was mixed with the stabilized sample at a 1:1 ratio and kept in the dark for 30 min for the reagents to react. The samples were measured at 565 nm. The ORP was measured with an ORP electrode (Hanna Instruments, Vöhringen, Germany) connected to an ORP controller (Alpha pH 800, Eutech Instruments, Singapore).

Electrochemical system

All electrochemical measurements (cyclic voltammetry, linear sweep voltammetry, and chronopotentiometry) were conducted in a five-neck round flask with a working volume of 50 mL. The electrochemical cells were operated as a two-electrode or a three-electrode setup and controlled *via* a potentiostat (VMP3, Bio-Logic, Grenoble, France). An Ag/AgCl (3 M KCl, 0.210 V *vs.* SHE) in-house-made reference electrode was used for the three-electrode setup. All measurements with a reference electrode were ohmic-drop corrected and were determined by potentiostatic electrochemical-impedance spectroscopy. Ohmic-drop-corrected potentials were calculated following the method of Sun *et al.*⁴⁸ The reaction kinetics of carbon and magnetite were calculated with the Butler–Volmer equation, using linear sweep voltammetry and cyclic voltammetry measurements (ESI[†]). The 1 × 1 cm carbon cloth electrode (PANEX 30-PW06, Zoltek, St. Louis, USA), thermally activated graphite felt (Sigracell, SGL carbon, Bonn, Germany) and the platinum wire (Bioanalytical Systems, Inc., West Lafayette, USA) were used as cathodes, and the carbon-based electrode, graphite rod (Mersen, Suhl, Germany), carbon cloth (Zoltek), thermally activated graphite felt (SGL carbon), the carbon paste electrode holder (Bio-Logic), and the gold electrode (Bio-Logic) were used as anodes depending on their intended application, which is described in the results part. A titanium wire (Sigma Aldrich, St. Louis, USA) was threaded through the carbon cloth and thermally activated graphite felt, and glued with carbon conductive cement (Thermo-Fischer, Waltham, USA) for better conductivity. The temperature was either room temperature or controlled by a water bath at 60 °C (ICC basic IB R RO 15 eco, IKA, Staufen im Breisgau, Germany). The supporting electrolyte for the abiotic

experiments was phosphate buffer (0.066 M) or phosphate buffered saline (0.05 M), with the pH buffered at 7.2. Before each abiotic electrochemical experiment, a high-purity N₂ gas was introduced to remove O₂. The bioelectrochemical systems were either autoclaved or chemically sterilized before the beginning of each experiment. The reactors were filled with 50 mL MS-Medium, were made anaerobic by sparging with 80:20 (v/v) N₂/CO₂ through a sterile filter, and were continuously stirred with a magnetic stir bar. The reactors were operated in batch mode and were fed for 5 min with pure CO₂ as the sole carbon source *prior* to the experiment and every day for 1 min after liquid sampling to exchange the headspace. After feeding, an overpressure of 80 mbar of CO₂ was kept in the headspace. The electrochemical cells were submerged in a water bath to prevent heat loss for optimal growth of *M. thermotrophicus* ΔH at 60 °C.

Immobilization of magnetite

Magnetite was immobilized by dispersing magnetite nanoparticles onto an Au electrode (Biologic) to test its electrochemical behavior. The protocol is an adjusted version from Sun *et al.*⁴⁸ Briefly, ten milligrams of the active powder and 40 μL of Nafion were mixed with 960 μL 70% ethanol and sonicated for 15 min. Then, 10 μL were drop casted onto the surface of the Au electrode and dried at room temperature. To avoid iron from oxidizing, the preparations for the drop casted magnetite were performed inside a glovebox (mBraun, Garching, Germany).

SEM, EDX, X-ray diffraction, and FTIR

A 50 μL aliquot of 0.1% poly-L-lysine solution was placed onto a glass slide and was dried for 1 h in a 60 °C incubator. The samples were placed onto a poly-L-lysine coated glass slide that was attached to aluminum stubs, using carbon adhesive tabs. The sample was coated with a 10 nm deposition of platinum, using a BAL-TEC™ SCD 005 sputter coater (Leica biosystems, Nussloch, Germany). The purpose of the coating was to reduce any charging effects during scanning electron microscope (SEM) analysis. All images were taken in secondary-electron (SE) mode using a Zeiss Crossbeam 550L focused ion beam (FIB) SEM (Zeiss, Wetzlar, Germany), which was operated with an acceleration voltage of 2 kV. The SEM was equipped with an Oxford Instrument energy dispersive spectrometry detector (Ultim Max, Oxford Instrument, Abingdon, United Kingdom). Elemental maps of iron and carbon were obtained along with corresponding spot analysis.

X-ray diffraction (XRD) was carried out on dry material using Bruker's D8 Discover GADDS XRD2 micro-diffractometer that was equipped with a Co-anode (Cu Kα radiation, λ = 0.154 nm) at parameters of 30 kV/30 mA (Billerica, USA). The total measurement time was 240 s at two detector positions, which were 15° and 40°. Fourier transform infrared (FTIR) spectroscopy was performed on a Vertex 80v equipped with an RT-DLaTGS detector (Bruker, Billerica, USA). 0.5 mg of sample was mixed homogeneously with 250 mg KBr (FTIR grade, Carl Roth, Karlsruhe, Germany) and compressed at 10T to form a

pellet. Samples were scanned 32 times in the range of 400–4500 cm⁻¹.

Author contributions

L. T. A., T. S., and R. B.-G. initiated the work. N. R., T. S., and L. T. A. designed the experiments. N. R. performed the laboratory experiments and analyzed the data. L. T. A. and T. S. supervised the project. N. R. and L. T. A. wrote the manuscript. All edited the paper and approved the final version.

Conflicts of interest

The authors declare no conflict of interest.

Acknowledgements

This work was supported by the Deutsche Forschungsgemeinschaft (DFG, German Research Foundation, EBiotech, SPP2240; L.T.A.) – project number 445506379, the Alexander von Humboldt Foundation in the framework of the Alexander von Humboldt Professorship (L. T. A.), and The Novo Nordisk Foundation CO₂ Research Center with grant number NNF21SA0072700 (L. T. A.). L. T. A. and A. K. are also grateful to funding from the Deutsche Forschungsgemeinschaft under Germany's Excellence Strategy – EXC 2124 – 390838134. R. B.-G. was supported by an FPI grant (BES-2015-074229) from the Spanish Ministry of Economy and Competitiveness (MINECO) within the research project CTQ2014-53718R. The authors gratefully acknowledge the Tübingen Structural Microscopy Core Facility (Funded by the Federal Ministry of Education and Research (BMBF) and the Baden-Württemberg Ministry of Science as part of the Excellence Strategy of the German Federal and State Governments) for their support and assistance in this work. The authors also thank the German Research Foundation DFG (INST 37/1027-1 FUGG) for the financial support provided for the acquisition of the cryogenic focused ion beam scanning electron microscope. We thank Prof. Dr Uwe Schröder (University of Greifswald) for helpful and insightful discussions.

Notes and references

- 1 K. P. Nevin, T. L. Woodard, A. E. Franks, Z. M. Summers and D. R. Lovley, *mBio*, 2010, **1**, e00103.
- 2 K. Rabaey and R. A. Rozendal, *Nat. Rev. Microbiol.*, 2010, **8**, 706–716.
- 3 P.-L. Tremblay, L. T. Angenent and T. Zhang, *Trends Biotechnol.*, 2017, **35**, 360–371.
- 4 F. Kracke, J. S. Deutzmann, W. Gu and A. M. Spormann, *Green Chem.*, 2020, **22**, 6194–6203.
- 5 C. G. S. Giddings, K. P. Nevin, T. Woodward, D. R. Lovley and C. S. Butler, *Front. Microbiol.*, 2015, **6**, 468.
- 6 P. Długołęcki, P. Ogonowski, S. J. Metz, M. Saakes, K. Nijmeijer and M. Wessling, *J. Membr. Sci.*, 2010, **349**, 369–379.

- 7 R. A. Rozendal, H. V. M. Hamelers and C. J. N. Buisman, *Environ. Sci. Technol.*, 2006, **40**, 5206–5211.
- 8 K. J. Kim, A. G. Fane, M. Nystrom, A. Pihlajamaki, W. R. Bowen and H. Mukhtar, *J. Membr. Sci.*, 1996, **116**, 149–159.
- 9 L. Jourdin, S. M. T. Raes, C. J. N. Buisman and D. P. B. T. B. Strik, *Front. Energy Res.*, 2018, **6**, 7.
- 10 J. J. Fornero, M. Rosenbaum and L. T. Angenent, *Electroanalysis*, 2010, **22**, 832–843.
- 11 N. Mano, F. Mao and A. Heller, *ChemBioChem*, 2004, **5**, 1703–1705.
- 12 D. Call and B. E. Logan, *Environ. Sci. Technol.*, 2008, **42**, 3401–3406.
- 13 S. Cheng, D. Xing, D. F. Call and B. E. Logan, *Environ. Sci. Technol.*, 2009, **43**, 3953–3958.
- 14 M. Kumar, S. Sandipam, S. K. Puri, S. S. V. Ramakumar, L. Diels and L. Bouwan, *European Pat.*, EP38319832020, 2020.
- 15 D. R. Lovley and K. P. Nevin, *USA Pat.*, 9856449, 2012.
- 16 H. Ju, S. Badwal and S. Giddey, *Appl. Energy*, 2018, **231**, 502–533.
- 17 N. E. Holubowitch, A. Omosebi, X. Gao, J. Landon and K. Liu, *Electrochim. Acta*, 2019, **297**, 163–172.
- 18 M. Carmo, D. L. Fritz, J. Mergel and D. Stolten, *Int. J. Hydrogen Energy*, 2013, **38**, 4901–4934.
- 19 A. Lai, F. Aulenta, M. Mingazzini, M. T. Palumbo, M. P. Papini, R. Verdini and M. Majone, *Chemosphere*, 2017, **169**, 351–360.
- 20 M. Zeppilli, E. Dell’Armi, L. Cristiani, M. Petrangeli Papini and M. Majone, *Water*, 2019, **11**, 2579.
- 21 M. R. Martin, J. J. Fornero, R. Stark, L. Mets and L. T. Angenent, *Archaea*, 2013, **2013**, 157529.
- 22 S. G. Ji, H. Kim, W. H. Lee, H.-S. Oh and C. H. Choi, *J. Mater. Chem. A*, 2021, **9**, 19834–19839.
- 23 Y. Yi, G. Weinberg, M. Prenzel, M. Greiner, S. Heumann, S. Becker and R. Schlögl, *Catal. Today*, 2017, **295**, 32–40.
- 24 A. J. Bard and L. R. Faulkner, *Electrochemical Methods: Fundamentals and Applications*, Wiley, Hoboken, NJ, USA, 2nd edn, 2000.
- 25 R. Yin, Y. Zhao, S. Lu, H. Wang, W. Cao and Q. Fan, *Electrochim. Acta*, 2009, **55**, 46–51.
- 26 A. Kiener and T. Leisinger, *Syst. Appl. Microbiol.*, 1983, **4**, 305–312.
- 27 G. Baek, R. Rossi, P. E. Saikaly and B. E. Logan, *Water Res.*, 2022, **219**, 118597.
- 28 F. Geppert, D. Liu, E. Weidner and A. ter Heijne, *Int. J. Hydrogen Energy*, 2019, **44**, 21464–21469.
- 29 N. Nishimura, S. Kitaura, A. Mimura and Y. Takahara, *J. Ferment. Bioeng.*, 1992, **73**, 477–480.
- 30 M. Zhou, J. Ding, L.-P. Guo and Q.-K. Shang, *Anal. Chem.*, 2007, **79**, 5328–5335.
- 31 C. Fink, S. Beblawy, A. M. Enkerlin, L. Mühling, L. T. Angenent and B. Molitor, *mBio*, 2021, **12**, e02766.
- 32 S. Hirano, N. Matsumoto, M. Morita, K. Sasaki and N. Ohmura, *Lett. Appl. Microbiol.*, 2013, **56**, 315–321.
- 33 P. Izadi, M. N. Gey, N. Schlüter and U. Schröder, *iScience*, 2021, **24**, 102822.
- 34 H.-W. Lin, C. Kustermans, E. Vaiopoulou, A. PrévotEAU, K. Rabaey, Z. Yuan and I. Pikaar, *Water Res.*, 2017, **118**, 114–120.
- 35 J. Cheng, H. Dong, H. Zhang, L. Yuan, H. Li, L. Yue, J. Hua and J. Zhou, *Bioresour. Technol.*, 2020, **314**, 123799.
- 36 M. J. Bradley and P. G. Tratnyek, *ACS Earth Space Chem.*, 2019, **3**, 688–699.
- 37 J. J. P. Roberts, J. A. Westgard, L. M. Cooper and R. W. Murray, *J. Am. Chem. Soc.*, 2014, **136**, 10783–10789.
- 38 W. A. Cavalcante, T. A. Gehring and M. Zaiat, *Chem. Eng. J.*, 2021, **415**, 128882.
- 39 M. Umetsu, T. Sunouchi, Y. Fukuda, H. Takahashi and C. Tada, *Archaea*, 2020, **2020**, 9432803.
- 40 X. Liu, W. Xu, D. Zheng, Z. Li, Y. Zeng and X. Lu, *J. Mater. Chem. A*, 2020, **8**, 17938–17950.
- 41 J. Zhao, Z. Tu and S. H. Chan, *J. Power Sources*, 2021, **488**, 229434.
- 42 T. T. Moench and J. G. Zeikus, *J. Microbiol. Methods*, 1983, **1**, 199–202.
- 43 Y. Zhang, F. Li, X. Liu, J. Lu and G. Zhang, *Electrochim. Acta*, 2017, **242**, 165–172.
- 44 J. Sorwat, A. Mellage, A. Kappler and J. M. Byrne, *J. Hazard. Mater.*, 2020, **400**, 123139.
- 45 L. L. Stookey, *Anal. Chem.*, 1970, **42**, 779–781.
- 46 J. D. Cline, *Limnol. Oceanogr.*, 1969, **14**, 454–458.
- 47 N. Gilboa-Garber, *Anal. Biochem.*, 1971, **43**, 129–133.
- 48 T. Sun, B. D. A. Levin, J. J. L. Guzman, A. Enders, D. A. Muller, L. T. Angenent and J. Lehmann, *Nat. Commun.*, 2017, **8**, 14873.