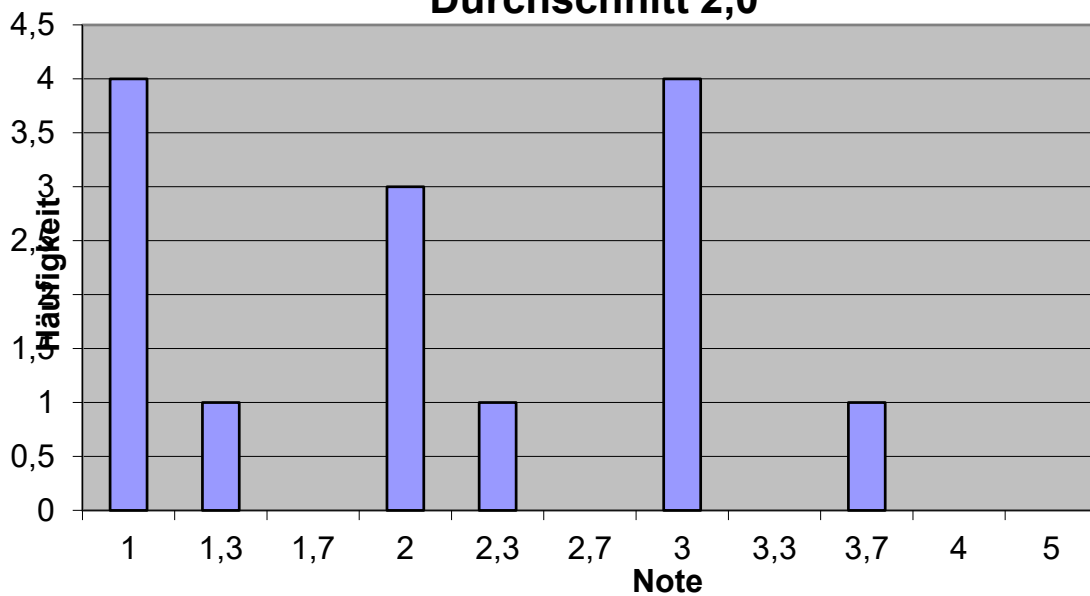


Notenstatistik WS 2020/21
B351 Steuerliches Rechnungswesen
Durchschnitt 2,0



Note	Anzahl	Prozent	Kumuliert
1	4	28,57%	28,57%
1,3	1	7,14%	35,71%
1,7	0	0,00%	35,71%
2	3	21,43%	57,14%
2,3	1	7,14%	64,29%
2,7	0	0,00%	64,29%
3	4	28,57%	92,86%
3,3	0	0,00%	92,86%
3,7	1	7,14%	100,00%
4	0	0,00%	100,00%
5	0	0,00%	100,00%