



## Press Release

### Unexpected differences between males and females in early mouse deer

Tübingen researchers study eleven million year old skull finds from Germany's Hammerschmiede clay pit

Tübingen, 18.05.2022

Mouse deer are among the smallest ruminants in the world. Today, they live in the tropics of Africa and Asia and are barely larger than hares. Males and females differ little in appearance. But that was not the case about eleven million years ago. Josephina Hartung and Professor Madelaine Böhme from the Senckenberg Centre for Human Evolution and Palaeoenvironment at the University of Tübingen came across a previously unknown difference between the sexes while examining two fossil mouse deer skulls from the Hammerschmiede clay pit in the Allgäu region of Germany. They discovered conspicuous bone ridges above the eyes on the skull of a male mouse deer; these ridges were not present in the females. The study was recently published in the journal *PLOS ONE*.

"In mouse deer living today, males differ from females only by enlarged and externally visible upper canine teeth," says Josephina Hartung, a doctoral student. These saber-like tusks serve as a weapon or demonstration of strength in fights between two males, she says. The extinct species, *Dorcatherium navi*, which lived eleven million years ago in what is now southern Germany, was slightly larger than today's species, Hartung says. They were contemporaries of the first upright walking ape *Danuvius guggenmosi*, whose remains from the same location were studied several years ago.

#### Air-filled bone structures

"What is unusual about the male mouse deer skulls from the Hammerschmiede are the well-developed bone ridges that enclose the top of the skull almost like a wreath," according to Hartung. This feature was previously unknown in both present-day or fossil mouse deer. Female mouse deer skulls from the same locality did not exhibit this feature. The researchers concluded that this must be a previously undiscovered sexual difference, also known as sexual dimorphism. A

University of Tübingen  
Public Relations Department

Dr. Karl Guido Rijkhoek  
Director

Janna Eberhardt  
Research reporter

Phone +49 7071 29-76788  
+49 7071 29-77853  
Fax +49 7071 29-5566  
karl.rijkhoek[at]uni-tuebingen.de  
janna.eberhardt[at]uni-tuebingen.de

Senckenberg Nature Research  
Society  
Press Office

Dr. Sören Dürr  
Director

Judith Jördens  
Phone +49 69 7542 1434  
judith.joerdens[at]senckenberg.de

pressestelle[at]senckenberg.de  
www.senckenberg.de/presse

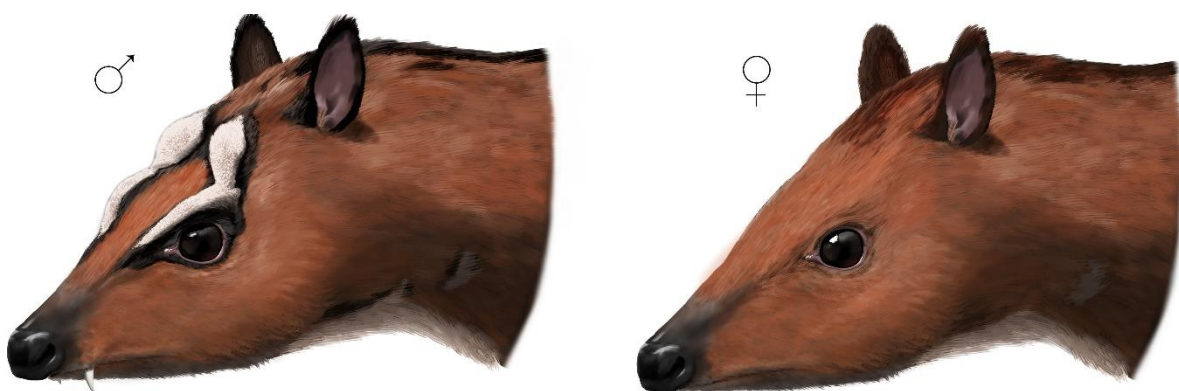
confirmation of this finding was obtained by comparing the finds with other fossil skulls of this mouse deer species.

It is interesting that the skull ridges of the male were filled with air, says Hartung. That was revealed by measurements using micro-computed tomography, an X-ray technique used to obtain three-dimensional images of the internal structure of small specimens, she says. "These data showed us that the ridges were not filled with dense bone material at all, but rather had many small cavities, similar to what we see in giraffes today." Whether these cavities served to reduce the weight of the skull or had some other function is unclear. "Possibly the ridge over the eye area protected the eye from combat injuries by the saber-like canines of another male, as is seen in Muntjak deer," Madelaine Böhme speculates.

### Signs of an ecologically diverse family

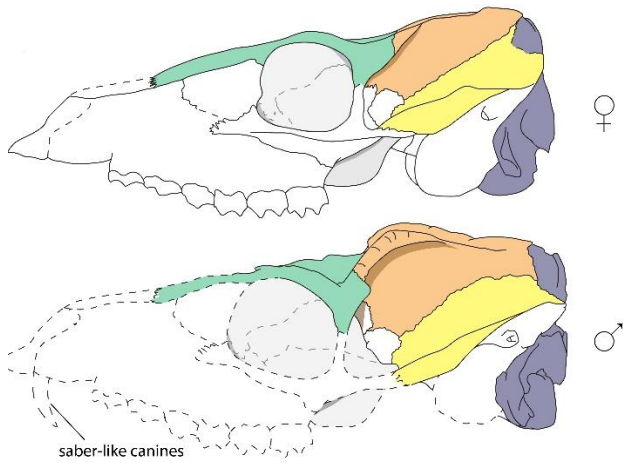
The researchers also believe it is likely that the bone ridges served as a kind of display feature, as decoration to impress females or deter other males. Something similar is seen in closely related ungulates such as giraffes, deer and antelopes, which bear horn-like outgrowths, horns or antlers, they say. "The fact that the evolutionarily more primitive mouse deer had bone protuberances on their skulls is a first for the biology of these small ruminants," Hartung says, adding it suggests that mouse deer once formed a more ecologically diverse family.

"Once again, the excavations at Hammerschmiede have shown the unique potential of the fossils. They help us to learn more about the evolution and biology of extinct species," says Böhme.

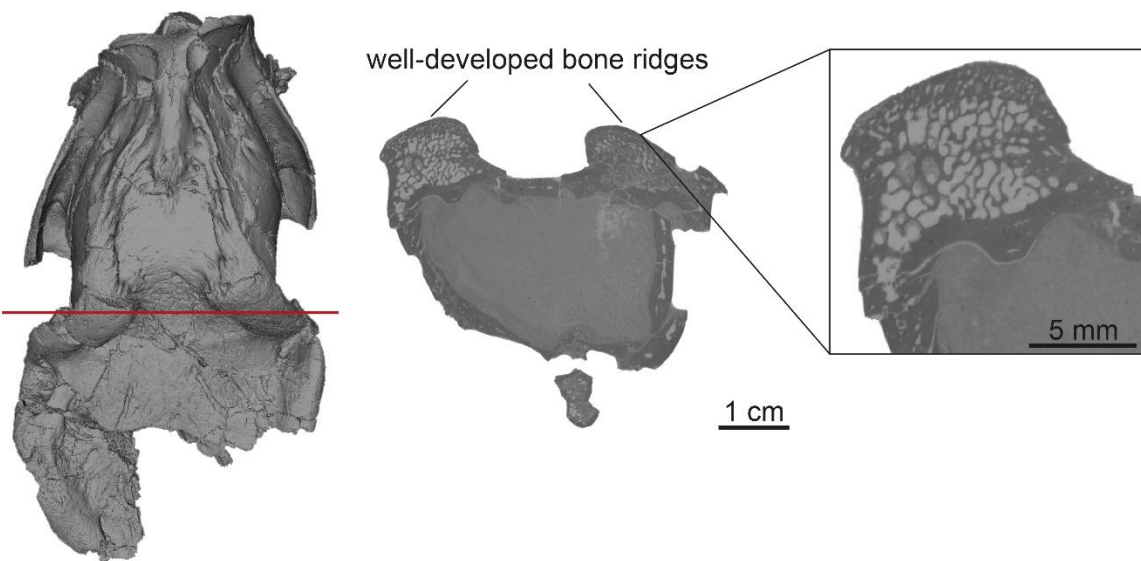
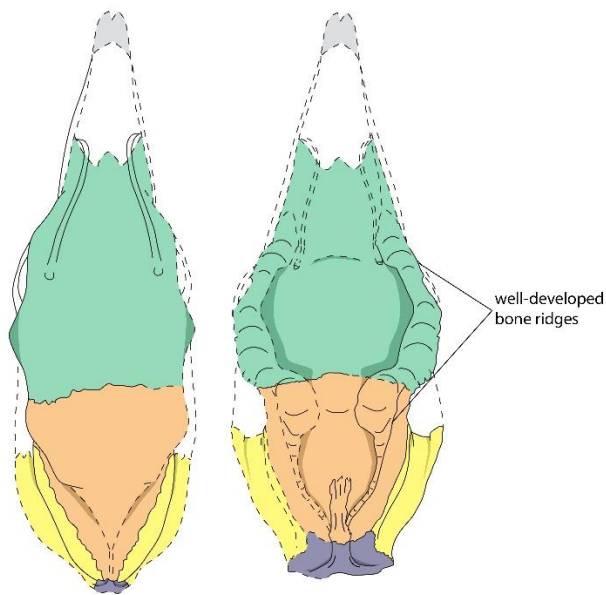


Drawing of the male (left) and female mouse deer of the species *Dorcatherium nauyi*, which lived eleven million years ago in what is now Germany's Allgäu region.

Drawings: © Peter Nicklolaus



Reconstruction of the female (top/left) and male (bottom/right) mouse deer skull from the Hammerschmiede clay pit. Images: Josephina Hartung



Virtual reconstruction of the male mouse deer skull from the Hammerschmiede clay pit. Micro-computed tomographic data show the air-filled internal structure of the pronounced cranial ridges. Images: Josephina Hartung

**Publication:**

Josephina Hartung & Madelaine Böhme 2022. Unexpected cranial sexual dimorphism in the tragulid *Dorcatherium nauii* based on material from the middle to late Miocene localities of Eppelsheim and Hammerschmiede (Germany). *PLOS ONE*, <https://doi.org/10.1371/journal.pone.0267951>

**Contact:**

Josephina Hartung  
University of Tübingen  
Geosciences – Terrestrial Palaeoclimatology  
josephina.hartung[at]uni-tuebingen.de

Professor Dr. Madelaine Böhme  
University of Tübingen  
Geosciences – Terrestrial Palaeoclimatology and  
Senckenberg Centre for Human Evolution and Palaeoenvironment  
Phone +49 7071 29-73191  
m.boehme[at]ifg.uni-tuebingen.de