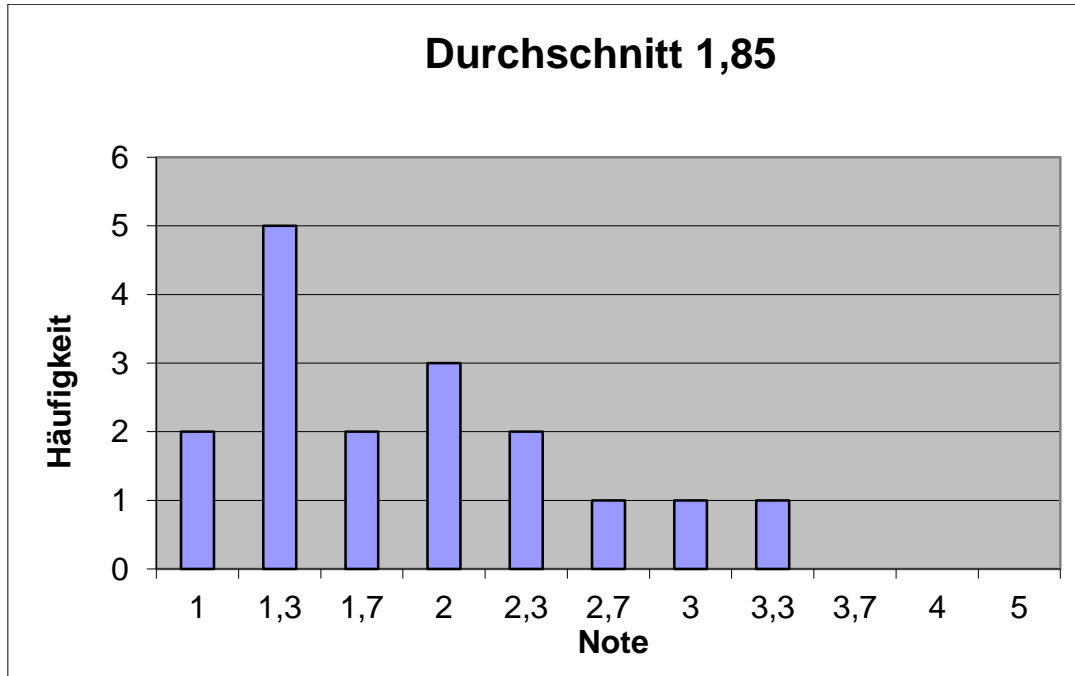


Notenstatistik WS 2017/18

B451 Unternehmensbesteuerung



Note	Anzahl	%	% kumuliert
1	2	11.76%	11.76%
1.3	5	29.41%	41.18%
1.7	2	11.76%	52.94%
2	3	17.65%	70.59%
2.3	2	11.76%	82.35%
2.7	1	5.88%	88.24%
3	1	5.88%	94.12%
3.3	1	5.88%	100.00%
3.7	0	0.00%	100.00%
4	0	0.00%	100.00%
5	0	0.00%	100.00%