



# NEWSLETTER



SOMMERSEMESTER 2021 - NR. 4

After a successful first half of 2021, where we were able to welcome researchers and fellows at the Center in Tübingen, we are starting into a promising second half of 2021. The Center resumes its activities, including the bi-weekly colloquium and the annual symposium in December 2021. We are happy, that we were able to find a new normal, which allows us to welcome fellows, start and continue collaborations, and host the annual symposium as a hybrid event thanks to technical equipment at the University of Tübingen.

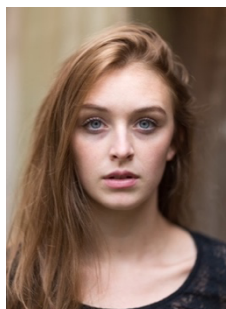
The second half of 2021 also comes with some news and changes.

We welcomed our second PhD student Brienna Eteson in the Junior Research Group, under the lead of Dr. Alexandros Karakostis. In addition, we were able to welcome Dr. Hugo Reyes-Centeno and Prof. Dr. Mark Hubbe as fellows during the summer. A warm welcome goes to Dr. Antonio Profico, who recently joined the center and will stay until the beginning of 2022.

Our scientific coordinator, Dr. Marisa Köllner, will be on parental leave. During this time, the position will be filled in by Miri Mertner.

We are looking forward to a successful second half of 2021 full of research, fellows, and collaborations.

## Brienna Eteson (PhD Candidate)



Brienna Eteson has joined the Junior Research Group in the DFG Center as a PhD student in Paleoanthropology having completed her MSc in Biological Anthropology at the University of Kent in 2020. Her previous research includes the study of muscle attachment sites (entheses) in relation to electromyographic data on muscular recruitment during stone-tool use. Brienna's areas of interest include evolutionary and functional anatomy and hominin stone-tool use. Whilst undertaking her PhD, Brienna is applying a multidisciplinary approach in experimental research, exploring the potential links between tool use and production with gestural and verbal communication.

## Miri Mertner (Transitional Scientific Coordinator)



Miri Mertner received her undergraduate degree in linguistics at the University of Edinburgh and went on to the University of Leiden to complete a Master's in diversity linguistics with a special focus on language contact and African linguistics. She is currently a PhD student at the University of Tübingen, where she continues to pursue her interest in the effects of language contact on the global and areal distribution of linguistic features. She is particularly interested in how a better understanding of contact can help shed light on humanity's linguistic past.

## Call for fellowship application

The Center is a forum of interdisciplinary discussion and research. Its fellowship program is a great opportunity to connect with the core staff and associated members to establish new, interdisciplinary ideas and research projects.



We would like to invite you to apply for a fellowship to work together with us in order to gain more insights in the human past from different research perspectives. The core staff and several local members are open to new collaborations as well as the associated Emmy Noether Junior Research Group “The Language Dynamics of the Ancient Central Andeas” lead by Dr. Matthias Urban.

For more information on the Center and the associated members and research groups, please visit our homepage [wordsandbones.uni-tuebingen.de](http://wordsandbones.uni-tuebingen.de)

For more information on the fellowship program, please have a look at the description and information on our webpage (<https://uni-tuebingen.de/forschung/forschungsschwerpunkte/forschungsgruppen/words-bones-genes-tools/fellowships/>) or contact our scientific coordinator Miri Mertner ([miri.mertner@uni-tuebingen.de](mailto:miri.mertner@uni-tuebingen.de)).

We would love to welcome you here in Tübingen at the Center “Words, Bones, Genes, Tools”.

## Sixth Annual Symposium

### Biocultural Implications: An Agenda for Integrative Approaches

#### Abstract:

The course of human evolution is defined by a multifaceted interplay of biological and cultural factors, which comprise the focus of a diverse spectrum of scientific fields, including cultural archaeology, biological anthropology, biomechanics, linguistics, and paleogenetics. Without interdisciplinary frameworks, a complete and reliable approach to various complex aspects of biocultural evolution would be impossible. Therefore, the symposium intends to build bridges between the different disciplines and to open a forum of discussion on integrative approaches. In order to do so, the symposium includes one session on “*Theoretical considerations in reconstructions of human behavior*”, which envisions to enable a critical discussion of various hypotheses and / or interdisciplinary methods used to approach aspects of bio-cultural evolution and lifestyle in the past (with a special emphasis on tool use and physical activity). The second session focuses on “*Biocultural Implications in Language Evolution and Diffusion*”, where the combination of cultural, genetic, and social aspects with linguistic components provides new insights in the evolution of languages, their diversity and contact scenarios. In order to open up a forum of discussion to gain new insights in the biocultural coevolution of the different scientific fields, we invited several recognized scientists who are specialists in their field of research. We are looking forward to two days full of new insights, interdisciplinary exchanges, and interesting discussions.

More information on the symposium can be found online (<https://uni-tuebingen.de/de/215008>), which will be update regularly including the list of speakers and final program.

#### Impressum:

##### Herausgeber:

Erberhard Karls Universität Tübingen  
DFG Kolleg-Forschungsgruppe „Words, Bones, Genes, Tools“  
c/o Rümelinstraße 23, 72070 Tübingen

[www.wordsandbones.uni-tuebingen.de](http://www.wordsandbones.uni-tuebingen.de)

Umsatzsteuer-Identifikationsnummer der Universität Tübingen gemäß § 27a  
Umsatzsteuergesetz: DE812383453

Verantwortlich: Prof. Dr. Katerina Harvati-Papatheodorou; Prof. Dr. Gerhard Jäger

Redaktion: Dr. Marisa Köllner (Tel. 07071 / 29-72139, [marisa.koellner@uni-tuebingen.de](mailto:marisa.koellner@uni-tuebingen.de))

Alle Rechte vorbehalten. Die Verwendung und weitere Veröffentlichung der Beiträge ist honorarfrei, sofern die Quelle benannt wird und Sie uns zwei Belegexemplare an die oben genannte Adresse senden. Die Verwendung der im Newsletter enthaltenen Fotos und Grafiken ist nicht frei, sie bedarf der ausdrücklichen Genehmigung durch die Universität Tübingen.

You subscribed to the newsletter of the DFG Center for Advanced Studies „Words, Bones, Genes, Tools“ to receive the news of the center.

To update your information or to unsubscribe from this newsletter, please visit our homepage:

[www.wordsandbones.uni-tuebingen.de](http://www.wordsandbones.uni-tuebingen.de)

Funded by

**DFG** Deutsche  
Forschungsgemeinschaft  
German Research Foundation