



**INTERNATIONAL INBOUND
EXCHANGE FACT SHEET**
for Trimester 3 2024 - 2025



Nomination process

Eligible students are to be officially nominated to Griffith University by the specified deadline. The link to the online nomination form will be sent out via email each trimester.

Once a student nomination has been accepted, the Global Mobility team will extend an invitation for the student to complete our [online application](#) which will be reviewed by the Griffith International Admissions team.

Documents needed to supply

- copy of the most recent official academic transcript (including academic grading scale)
- [proof of English proficiency](#) (if required)
- copy of passport

Students may be asked for certified copies of the documentation listed above, for example signed and stamped by a home university representative.

Please note: Students who choose to study fine art, photography, or music courses at the South Bank campus may be required to submit a portfolio or audition files.

How to apply

Once a student's nomination is confirmed, they will be invited to complete our [online application](#) and upload their supporting documents and course selections by the application deadline. They should not apply until their nomination has been confirmed. **Please note that students will not be contacted until after the nomination deadline has passed.**

Important:

Should the number of students who wish to apply to study at Griffith exceed the available places, they are welcome to apply as a [Study Abroad](#) applicant. Respective [tuition fees](#) would apply.

griffith.edu.au/international/global-mobility/inbound

Griffith University operates on a trimester model, offering three trimesters over a 12-month cycle. Dates for 2024 are outlined below. Consult comprehensive information on our [Academic Calendar and key dates webpage](#).

Please note that these dates are subject to change.

Trimester 3 2024 (October 2024 to February 2025)

Nomination deadline:	14 June 2024
Application deadline:	19 July 2024
Preferred arrival date:	At least one week before orientation if students need to find accommodation.
Orientation:	28 October – 1 November 2024
Classes start:	4 November 2024
Student vacation:	23 December 2024 – 3 January 2025
Exam period:	13 – 22 February 2025

Courses offered in Trimester 3 can be taught in intensive and/or mixed mode and some are only available online.

Trimester 1 2025 (February to June)

Nomination deadline:	13 September 2024
Application deadline:	18 October 2024
Preferred arrival date:	At least one week before orientation if students need to find accommodation.
Orientation:	24 – 28 February 2025
Classes start:	3 March 2025
Student vacation:	14 – 18 April 2025
Exam period:	5 – 14 June 2025

Trimester 2 2025 (July to October)

Nomination deadline:	14 February 2025
Application deadline:	21 March 2025
Preferred arrival date:	At least one week before orientation if students need to find accommodation.
Orientation:	7 – 11 July 2025
Classes start:	14 July 2025
Student vacation:	11 – 15 August 2025
Exam period:	16 – 25 October 2025

Study areas

Business: accounting, Asian & international studies, economics, employment relations, entrepreneurship, event management, government & international relations, human resource management, international business, tourism and hotel management, logistics and supply chain management, management, marketing, politics and public policy, sport management, sustainable enterprise, sustainable tourism management, real estate & property development

Arts, Education, Law: animation, art theory, design, digital media, fashion design, fine art, games design, industrial design, photography, music composition, music technology, musical theatre, performance, popular music, health & physical education, music education, primary education, secondary education, special and inclusive education, Australian & indigenous studies, creative writing & literature, Islam-west relations, Journalism, Japanese, Chinese, Spanish, Italian, linguistics, media & communications, public relations, screen studies & production, social sciences, criminology, criminal justice, law

Sciences: climate change & adaptations, ecology & conservation biology, environmental health, environmental management, environmental planning, environmental protection & pollution, environmental science, environmental sustainability, water resources, architecture, applied mathematics, aquatic systems, aviation & aviation management, bioinformatics, biochemistry & molecular biology, chemistry, marine biology, microbiology, nanoscience & physics, wildlife biology, civil engineering, computer science, electrical & electronic engineering, energy engineering, engineering management, computer engineering, biomedical engineering, environmental engineering, industrial design, information technology, mechanical engineering, mechatronic engineering, microelectronic engineering, multimedia

Health: biomedical sciences, exercise science, human services, medical science, nursing, nutrition, psychology, public health, social work

Credit point system

A standard course at Griffith is 10 credit points and is considered to equate to approximately 15 hours per week, including all forms of teaching contact and private study. A typical full-time study load at Griffith is 40 credit points.

Approximate credit point translations:

- 10 credit points = 3-4 credits in the US System
- 10 credit points = 7.5 ECTS in the European system

*Please note this should be used as a guide only.

Course selection

Search for a specific course (subject)

1. Visit the [online Course Finder](#).
2. Enter a keyword (for example, "marketing" or "engineering").
3. Filter the results if required (for example, course level, trimester commencing, campus, etc.).

Or search for course lists sorted by degree program

1. Click on the relevant degree.
2. Click on the course list and requirements.
3. View courses in the list.

Please Note: More Information along with the Course Search Guide, can be found under the [Study Options webpage](#). Most undergraduate and postgraduate courses offered at Griffith University are available to inbound students, with some restrictions. Please refer to the Study Options page [Restricted Courses](#) for more information. Please provide the students' official academic transcript upon application, which will be used to assess whether they meet any prerequisite requirements for each course. If further information is required to make this assessment, such as detailed course profiles, then we will notify you.

Campuses

Griffith University has [five campuses](#) across the Gold Coast and Brisbane cities. Check out our campus tour videos from the links below and other videos at youtube.com/@GriffithIntl/featured

For more information visit griffith.edu.au/life-at-griffith

Gold Coast

One hour drive south of Brisbane city. This campus had the most comprehensive range of study areas and courses. It is Griffith University's biggest campus.

Nathan

Located about 20 minutes from Brisbane city central by bus and hosts a comprehensive range of courses including business, science, and health.

South Bank

Located in the city is home to the Queensland College of Art and the Queensland Conservatorium of Music. South Bank offers courses in fine art, photography, animation, film, and music.

Mt Gravatt

Five minutes from the Nathan campus (there is a free intercampus bus to Nathan). Mt Gravatt offers courses in Education, Psychology, Criminology and Criminal Justice.

Logan

A semi-rural campus about 30 minutes from Brisbane and from the Gold Coast. Offers it, business, human services (social work and rehabilitation). This campus is not recommended for international students due to its isolated location.

Accommodation

On-campus:

On-campus accommodation is available at the Nathan and Gold Coast campuses. There are limited spaces, therefore it is recommended to apply as soon as you have received your offer letter from Griffith University.

Nathan

Self-catered options are available. Six- to eight-bedroom fully furnished co-educational flat. You will have your own lockable bedroom and share a kitchen, dining/lounge room and bathrooms facilities with your flat mates.

Please refer to griffith.edu.au/accommodation/on-campus for more information.

Gold Coast

Self-catered option only. One-, two- or five-bedroom fully furnished apartments available. You will have your own bedroom and share a kitchen, dining/lounge room and bathrooms facilities with your flat mates.

Please refer to griffithuv.com.au for more information.

Off-campus:

Griffith University has partnerships with a selection of off campus accommodation providers across its 5 campuses.

Various factors have been considered when selecting our partners including location, price and facilities. By choosing to stay at a preferred partner you can be close to your chosen campus and have access to public transport options. Some sites are only 5 minutes' walk.

Some of our partners have offered our students discounted rates on selected room types that can be accessed only by applying through the Griffith University accommodation website.

Please refer to griffith.edu.au/accommodation/preferred-partners for more information.

griffith.edu.au/international/global-mobility/inbound

Overseas Student Health Cover (OSHC) Insurance

All students are required to have OSHC as a condition of their Australian student visa. OSHC will be arranged through Allianz Global Assistance, Griffith University's preferred provider, and included in the offer letter. Students will be required to pay an OSHC fee to Griffith University at the time of accepting offer.

Students who are citizens of [Belgium, Norway and Sweden](#) are normally exempt from paying OSHC under a mutual government arrangement.

Living expenses

Knowing the average living costs in Australia is an important part of your financial preparation. To get a better idea, check out a handy Cost of Living Calculator at studyaustralia.gov.au/english/live/living-costs.

This tool is designed to help you estimate how much it could cost to have the lifestyle you choose in Australia. You can compare accommodation arrangements, transportation options as well as other lifestyle choices.

Visa information

Students are responsible for ensuring they obtain the [appropriate visa to study in Australia](#).

Useful links

Website for Study Abroad and Exchange	griffith.edu.au/international/study-abroad-exchange
Application instructions for exchange students	griffith.edu.au/international/global-mobility/inbound/how-to-apply/exchange-program
Application instructions for study abroad students	griffith.edu.au/international/global-mobility/inbound/how-to-apply/study-abroad-program
Visa information	homeaffairs.gov.au/ griffith.edu.au/international/global-mobility/inbound/before-you-arrive
Websites for further local information about the city/town university area	griffith.edu.au/international tq.com.au destinationgoldcoast.com visit.brisbane.qld.au studygoldcoast.org.au choose.brisbane.qld.au

Key Contacts



Isis Kowaliauskas

Manager, International
Partnerships
(she/her)



Ian Jeon

Coordinator, Global Mobility
(he/him)



Melissa Garcia

Global Mobility Adviser
(she/her)
*Part-time, Monday to
Wednesday, and Friday*



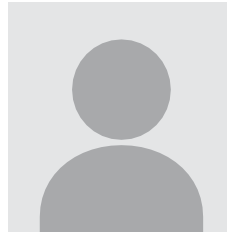
Willow Pershouse

Global Mobility Adviser
(she/her)



Vacant

Global Mobility Adviser



Vacant

Global Mobility Adviser

For enquiries relating to your students coming to Griffith: inboundmobility@griffith.edu.au

For information regarding Griffith's outbound students: outboundmobility@griffith.edu.au

Emergency Contacts

For partner students studying at Griffith please call: **+61 418 159 419**

For Griffith students studying at a partner please call: **+61 400 083 599 OR +61 413 451 104**