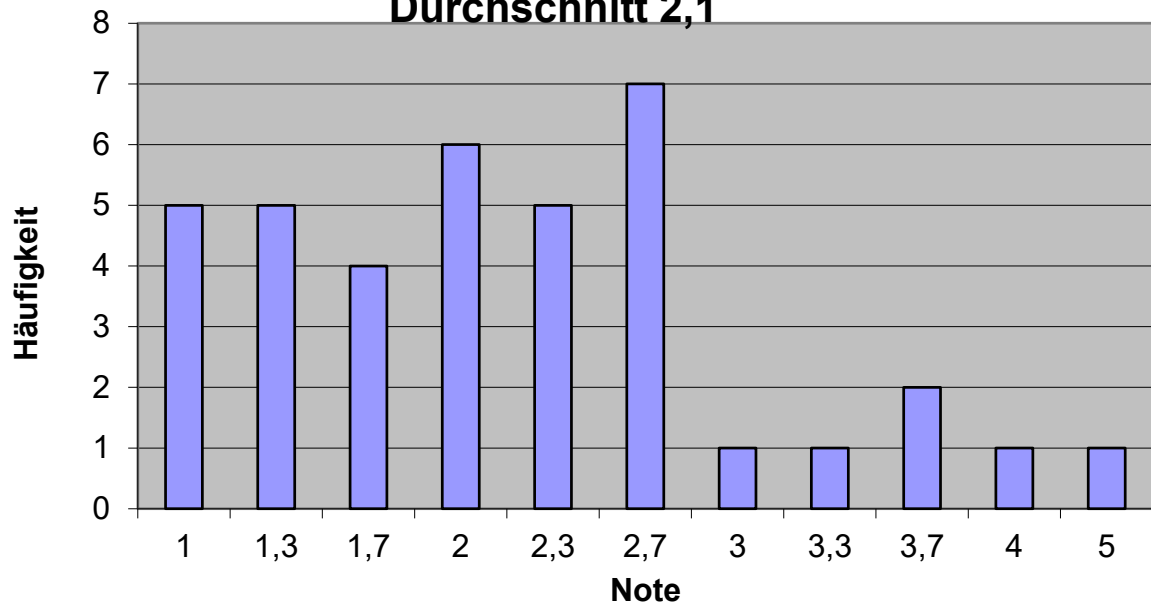


Notenstatistik WS 2020/21
B350 Grundlagen der Besteuerung
Durchschnitt 2,1



Note	Anzahl	Prozent	Kumuliert
1	5	13,16%	13,16%
1,3	5	13,16%	26,32%
1,7	4	10,53%	36,84%
2	6	15,79%	52,63%
2,3	5	13,16%	65,79%
2,7	7	18,42%	84,21%
3	1	2,63%	86,84%
3,3	1	2,63%	89,47%
3,7	2	5,26%	94,74%
4	1	2,63%	97,37%
5	1	2,63%	100,00%