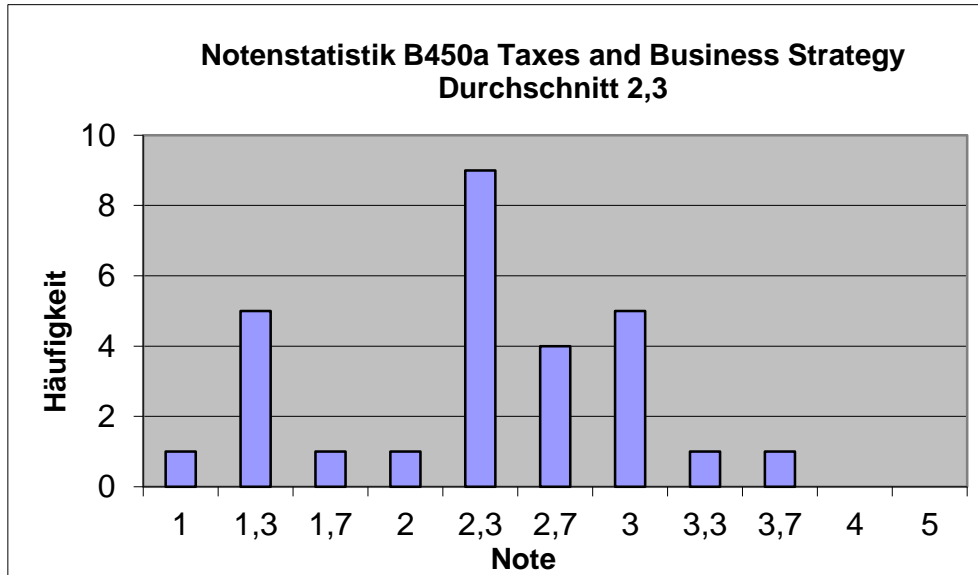


Notenstatistik SoSe 2018

B450a Taxes and Business Strategy



Note	Anzahl	%	% kumuliert
1	1	3.57%	3.57%
1.3	5	17.86%	21.43%
1.7	1	3.57%	25.00%
2	1	3.57%	28.57%
2.3	9	32.14%	60.71%
2.7	4	14.29%	75.00%
3	5	17.86%	92.86%
3.3	1	3.57%	96.43%
3.7	1	3.57%	100.00%
4	0	0.00%	100.00%