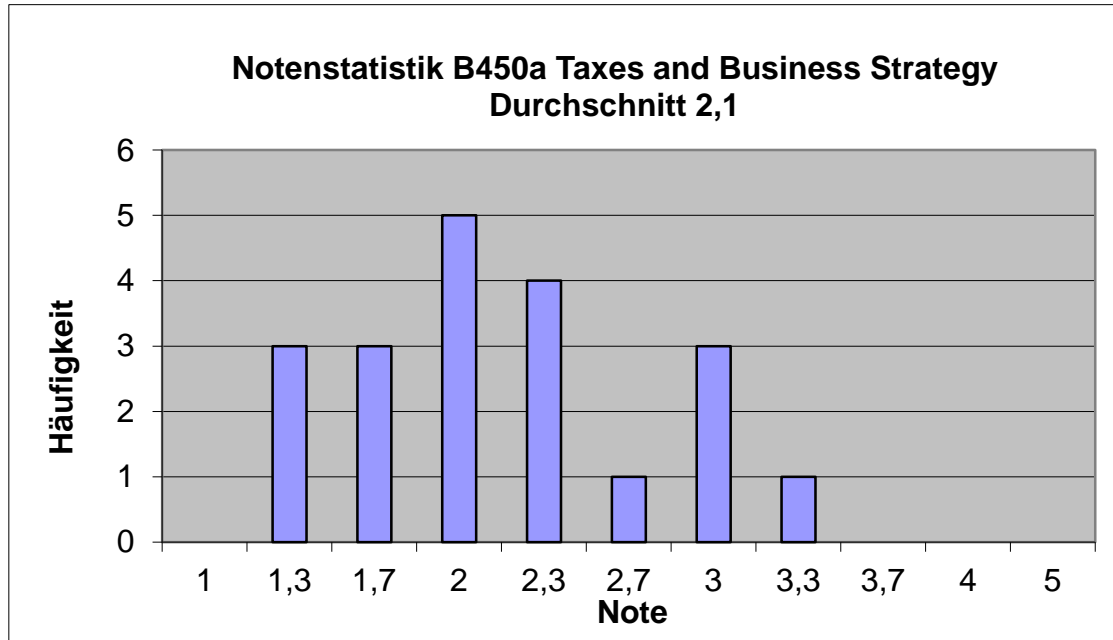


# Notenstatistik SoSe 2019

## B450a Taxes and Business Strategy



9

Note	Anzahl	%	% kumuliert
1.0	0	0.00%	0.00%
1.3	3	15.00%	15.00%
1.7	3	15.00%	30.00%
2.0	5	25.00%	55.00%
2.3	4	20.00%	75.00%
2.7	1	5.00%	80.00%
3.0	3	15.00%	95.00%
3.3	1	5.00%	100.00%
3.7	0	0.00%	100.00%
4.0	0	0.00%	100.00%