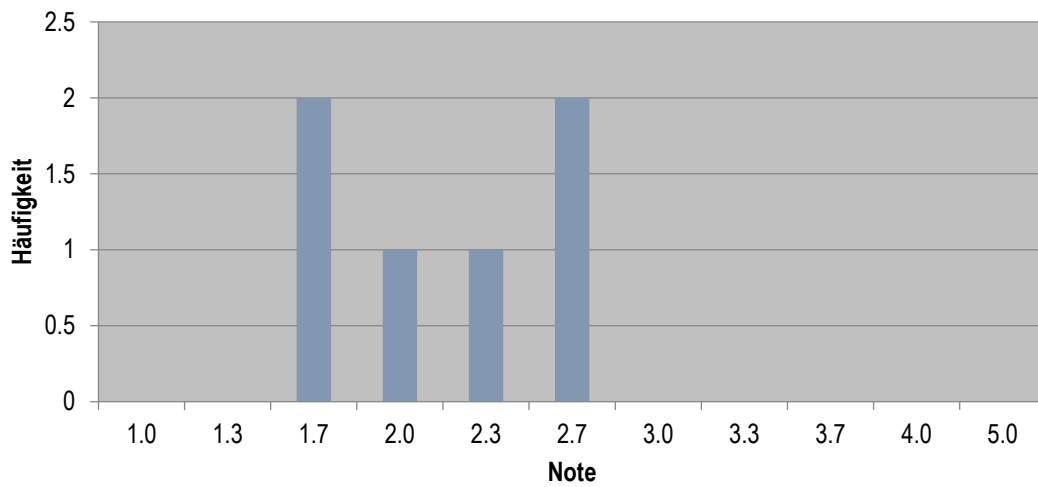


Notenstatistik NT WS 2019/2020
B351 Steuerliches Rechnungswesen
Durchschnitt: 2,1



Note	Anzahl	%	% kumuliert
1.0	0	0.00%	0.00%
1.3	0	0.00%	0.00%
1.7	2	33.33%	33.33%
2.0	1	16.67%	50.00%
2.3	1	16.67%	66.67%
2.7	2	33.33%	100.00%
3.0	0	0.00%	100.00%
3.3	0	0.00%	100.00%
3.7	0	0.00%	100.00%
4.0	0	0.00%	100.00%
5.0	0	0.00%	100.00%