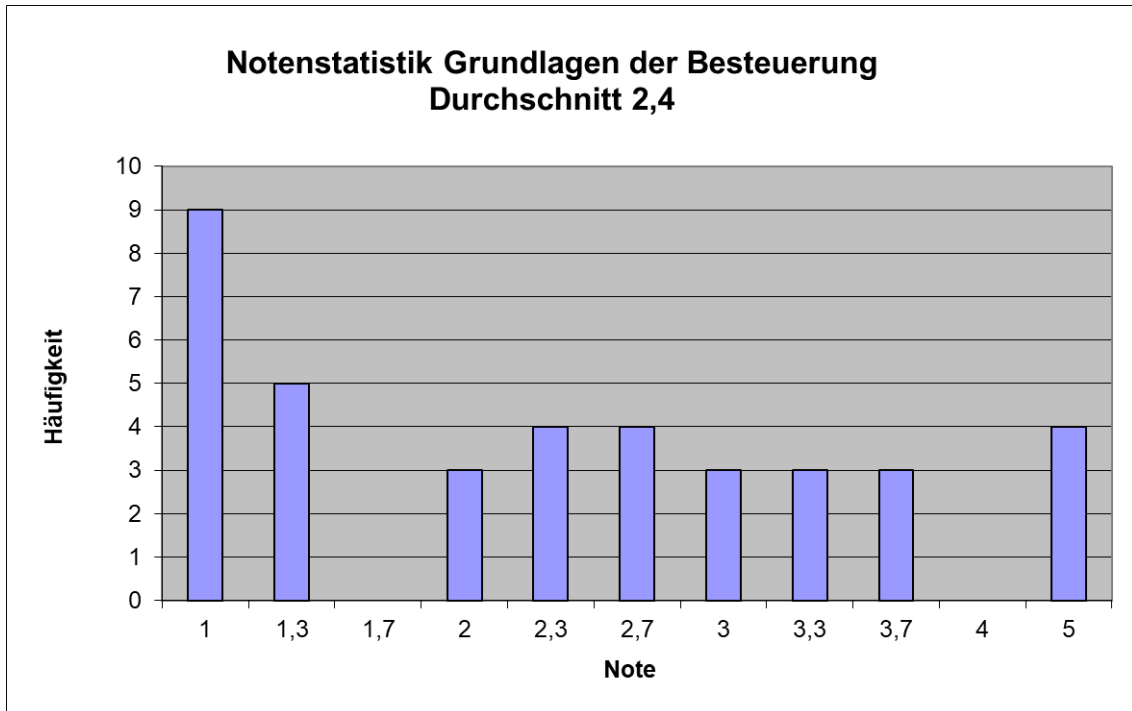


Notenstatistik WS 2018/19

B350 Grundlagen der Besteuerung



Note	Anzahl	Prozent	Kumuliert
1	9	23,68%	23,68%
1,3	5	13,16%	36,84%
1,7	0	0,00%	36,84%
2	3	7,89%	44,74%
2,3	4	10,53%	55,26%
2,7	4	10,53%	65,79%
3	3	7,89%	73,68%
3,3	3	7,89%	81,58%
3,7	3	7,89%	89,47%
4	0	0,00%	89,47%
5	4	10,53%	100,00%