

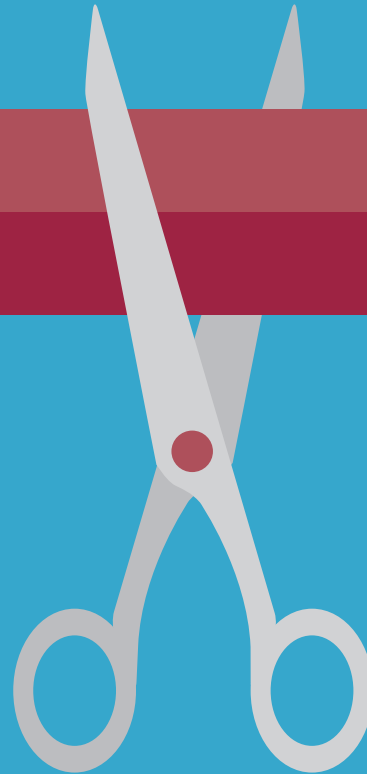


# STARTING YOUR STUDIES A GUIDE

Welcome to the University of Tübingen



Winter Semester 2025/26  
Summer Semester 2026





## Content

### 4 The University

- 5 attempto!
- 6 Facts and Figures
- 8 Teaching Guidelines
- 10 CIVIS – A European Civic University
- 11 The University Online

### 12 First Steps

- 13 To Begin With - Important Dates
- 16 Checklist
- 19 Initial Sources of (online) Advice
- 20 Student Administration
- 23 alma – The Teaching and Learning Portal
- 24 Examination Offices
- 25 Important Tools

### 26 Advice

- 27 ... at all Stages of your Studies
- 31 ... from Students
- 32 Other Sources of Support

### 34 Explore the World

- 35 The World in Tübingen
- 38 From Tübingen into the World

### 40 University and Faculties

- 41 Faculties
- 42 Faculty of Protestant Theology
- 43 Faculty of Catholic Theology
- 44 Faculty of Law
- 45 Faculty of Medicine
- 45 Faculty of Humanities
- 46 Faculty of Economics and Social Sciences
- 46 Faculty of Science
- 47 Center of Islamic Theology

### 50 Teacher Training

- 51 Tübingen School of Education (TüSE)

### 54 Facilities and Services

- 55 The University Library - One for All
- 58 ZDV – IT for the Entire University
- 59 Foreign Language Center
- 60 Diversity-oriented Centre for Writing
- 61 Transdisciplinary Course Program & Career Service (TRACS)
- 63 Studium Generale
- 63 Studium Oecologicum
- 64 University Sports Center
- 66 Music and Concerts
- 68 The University Museum
- 69 Literature and Art
- 71 Center for Media Competence
- 72 Student Self-Government

### 74 Life in Tübingen

- 75 Our City is a University
- 76 Funding
- 78 Housing
- 79 Eating
- 80 Getting Around

- 82 Bus Routes
- 83 Online Maps
- 83 Online Glossary
- 84 Maps

- 88 Imprint

# A Warm Welcome!

Dear new students,

Welcome to the University of Tübingen! We are delighted to be welcoming you here as students. A new stage in your lives is beginning for many of you as you start your studies. The studying, the organization, the structure of the university all differ in many ways from the familiar life you lived at school, college or work. And living in the university city of Tübingen will be a massive step into a new way of life for many of you. Finding your own way to success here demands strength, persistence and sometimes even courage.

The University of Tübingen emphasizes the importance of enabling you to work, research and learn together in all its facets. Therefore, face-to-face teaching is an important part of studying at our university. Furthermore, it is our concern to integrate the experience and newly developed concepts that we gained during the Coronavirus pandemic into teaching in a future-oriented way. In addition to traditional face-to-face teaching, we offer blended learning, hybrid, digitally supported and purely digital events. Our university promotes innovative digital teaching/learning formats and methods such as peer learning and game-based learning.

To make it easier for you to start your studies, the university provides a wealth of advisory and orientation services, some especially designed to meet the needs of our international students.

You can find key information about starting at the university in this brochure: it will help you to take your first steps at the university, gives information on how to organize your studies, where to access important advisory and support services, and also offers an overview of the sporting, cultural and musical opportunities that you can enjoy at the university on top of your specialist studies. Last but not least, we have put together some tips

on financing your studies, finding accommodation and mobility in Tübingen. All brief summaries are supplemented with links to further details, and information on the websites is updated regularly. Always stay up-to-date and check whether there are any changes in office hours, dates or even courses.

I hope the University of Tübingen becomes "your" University, and that in later years you will be proud to be one of our Alumni. Above all, however, I wish you success, commitment and curiosity in your studies at Tübingen.

Best of luck!

We will do our very best to support you!



Yours

A handwritten signature in black ink, which appears to read 'K. Pollmann'.

(Professor Dr. Dr. h.c. (Döshisha)

Karla Pollmann

President of the University of Tübingen





THE UNIVERSITY

# attempto!

**Eberhard Karls Universität Tübingen**  
**Geschwister-Scholl-Platz, 72074 Tübingen**

It was back in 1477 that Count Eberhard the Bearded founded the University of Tübingen with four faculties: Theology, Law, Medicine and Philosophy.

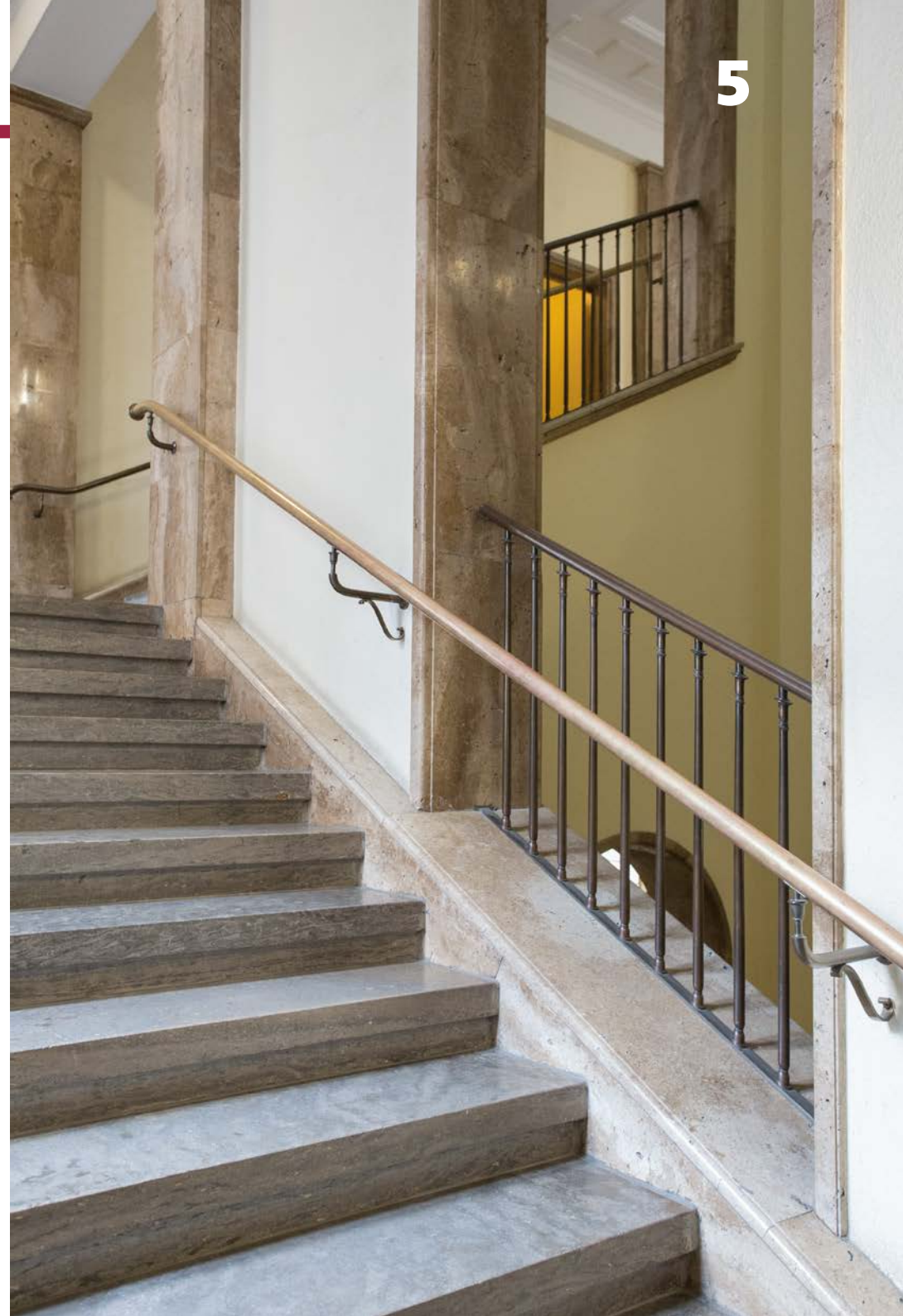
Three hundred years after the university's foundation, Hölderlin, Hegel and Schelling were all students at the same time at the Tübinger Stift seminary, which had been added to the university. It took more than another 100 years before women were also admitted as students in 1904. In 1977, on its 500th anniversary, the university had just under 20,000 students – 100 years earlier it only had 1,000. Today, more than half of the over 28,000 students are women. The University of Tübingen has been a German University of Excellence since 2012 and offers, with its now seven faculties, more than 200 different degree programs – from Advanced Quantum Physics to Studies in the Global South.

Insights into past times are provided in the Museum of the University of Tübingen (MUT) at Hohentübingen Castle with numerous showpieces from a wide variety of eras. At the same time, the university is looking ahead to the future – as a founding partner of Europe's largest research consortium in the field of artificial intelligence, the Cyber Valley.

The list of famous personalities who studied, researched or taught at the university is long. Johannes Kepler, Ludwig Uhland, Friedrich List, Eduard Mörike, Friedrich Miescher, Alois Alzheimer, Ernst Bloch, Walter Jens, Joseph Ratzinger, Hans Küng, Christiane Nüsslein-Volhard and many other great intellects have all helped to shape the university over the centuries.

So you are in good company. Let the university motto inspire you in your studies:

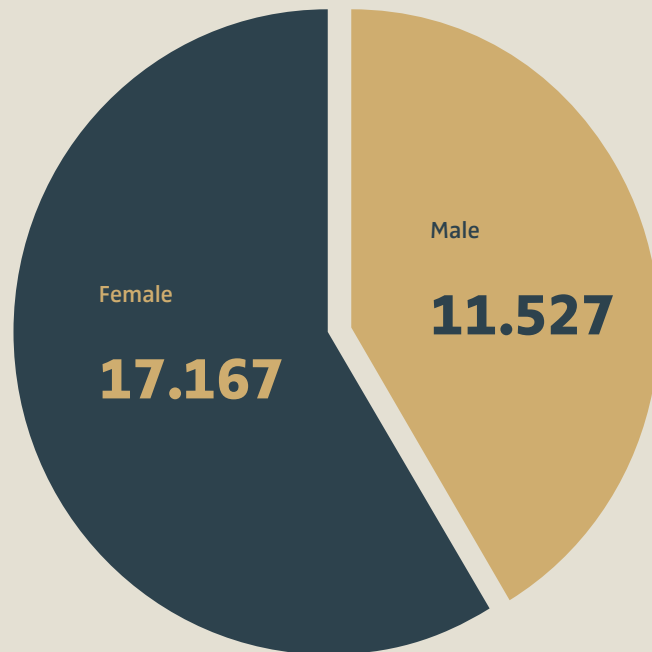
"attempto!" (Latin for "I dare!")



## Facts and Figures

Students at the University of Tübingen  
Winter Semester 2024/2025

# 28.694



Faculty of Protestant Theology



Faculty of Catholic Theology



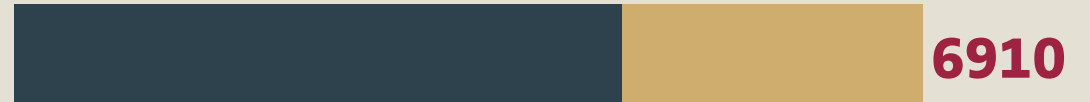
Faculty of Law



Faculty of Medicine



Faculty of Humanities



Faculty of Economics and Social Sciences



Faculty of Science



Center of Islamic Theology



International partners of the university  
All figures from 2023

North America	<b>107</b>
Latin America	<b>26</b>
Europe	<b>350</b>
Africa	<b>15</b>
Asia	<b>41</b>
Oceania	<b>10</b>





# Teaching Guidelines

**We have adopted a groundbreaking concept as the basis for a new culture of teaching and learning in a globalized world.**

What life skills do we in Tübingen want to pass on to our students? What are the goals for when they leave our university? What teachers do we need to achieve this and what do we expect of them? In this context, what is important for our "service providers", whether they are consultants or others?

We want to enable our students to act responsibly and sustainably in our globally networked world. That's why we focus on topics such as global awareness, internationalization as well as dealing with diversity and digitalization. With a multifaceted teaching and learning design, we want to enable a successful graduation and comprehensive personal development, while simultaneously encouraging students to actively contribute to shaping the university and society.

## ASSUMING RESPONSIBILITY

Students learn to assume responsibility for themselves and their studies, as well as for their fellow students. In a social setting the aim is to act conscientiously, to be dedicated and to recognize science's responsibility to civil society. Allowing freedom in the curriculum enables students from all disciplines to reflect critically on the questions of our time and strengthen their judgment. This calls for continuous development of teaching skills and the curricula.

## RECOGNIZING AND PROMOTING POTENTIAL

Over the course of their degree studies, students' potential and individual capabilities are acknowledged and encouraged, in order to comprehensively realize the university's goals of education in the sense of personal development as well as professional qualification and acquiring occupational competence. The initiation into science during the study introduction phase and the transition from school to university are of crucial importance here. Furthermore we ensure that potential students are fully-informed and carefully consider their choice of studies.

## CREATING OPPORTUNITIES

A wide range of coordinated activities and input enable our heterogeneous student body to achieve a balance between professional qualification, first steps in academia and preparation for employment. At the same time, students have the opportunity to pursue their individual educational interests (with a view to their CV). Over the course of their studies they can access comprehensive advisory services and gain insights into professional life.

## READY FOR NEW CHALLENGES

Teaching in Tübingen is research oriented and a global perspective on the sciences and the questions of our time. This results in considerable openness to future issues such as digitalization, AI, sustainability, etc., which is accompanied by a critically reflective and ethically based discussion. Teaching and (higher education didactics) professional training rely on innovative and digitally-based forms of teaching and learning. These formats can be deployed flexibly and take into account the diversity of all involved as well as the increasing internationalization of the university.



Educational  
videos

Advice, consulting  
and support  
during the start of  
your studies

Digital formats  
in teaching:  
Blended Learning

"Rhetoric  
and  
communication"





## CIVIS

A European Civic University



The University of Tübingen has formed the CIVIS – A European Civic University alliance with ten other European universities (Aix-Marseille, Athens, Bucharest, Brussels, Lausanne, Madrid, Rome, Salzburg, Stockholm and Glasgow). The shared goal of the partners is to support the international exchange of students, cooperation in teaching, European civil society and cooperation with Africa and the Middle East. CIVIS' objective is to tackle the major social challenges of the 21st century by carrying out relevant research and acting responsibly and sustainably with an eye to the future. As a "European University", the network is funded by the EU's ERASMUS+ program.

### THEMATIC FOCUSES

- ▶ Health
- ▶ Cities, Territories, Mobilities
- ▶ Climate, Environment, Energy
- ▶ Digital and Technological Transformations
- ▶ Society, Culture, Heritage

Through its work, CIVIS aims not only to promote European cohesion, but also focuses on cooperation with the Maghreb states, the Middle East and sub-Saharan African countries.



### OFFERS FOR STUDENTS

The activities within the framework of CIVIS are intended to make you, our students, more internationally mobile and to open up new perspectives for you. Thus, we offer:

#### INCREASING THE INTERNATIONAL MOBILITY OF STUDENTS

- ▶ Expansion of the ERASMUS program
- ▶ Transnational short-term CIVIS programs: Micro-Programmes, BIPs
- ▶ Courses in Tübingen open to students from all CIVIS universities
- ▶ Development of transnational digital courses
- ▶ Development and expansion of virtual mobility

#### EXPANSION OF SERVICE LEARNING OPPORTUNITIES

- ▶ Local and international Service Learning opportunities

You can find a summary of CIVIS events and offerings together with the relevant contact here: [uni-tuebingen.de/en/181783](https://uni-tuebingen.de/en/181783) and [civis.eu/en](https://civis.eu/en)





Homepage



E-Mail



Administration platform



Learning platforms



## The University Online

As well as its official homepage, the University of Tübingen has a presence on various social media platforms. There, current events and study-related tips are routinely posted.

You will find the following buttons used throughout this brochure. If you click on them, you will be taken directly to the relevant website. In the print version we provide the most important addresses as (brief) links.

**Follow our social media channels and keep up to date!**



Info video/YouTube



Facebook



Instagram



Bluesky



Mastodon



LinkedIn



# FIRST STEPS

# To Begin With – Important Dates

The date you start studying is determined by when the main lecture period starts. This is set separately each semester. You will not be sent a special reminder of your start date after matriculation.

## ORIENTATION WEEKS



From October 6<sup>th</sup> to October 17<sup>th</sup>, 2025, the University of Tübingen organizes Orientation Weeks (sometimes known as Freshers' Weeks) for all new students, whether from Germany or farther afield. Multidisciplinary and specialist introductory events will introduce you to key contacts at the university, give you an overview of the structure and content of your studies and tips on organizational details, and provide you with support putting together your personal timetable. Not all the events are compulsory, however we seriously recommend that you take part. You can find a summary of what's on during the Orientation Weeks on the "How to get started" website:

[uni-tuebingen.de/en/3941](https://uni-tuebingen.de/en/3941)

## PREPARATORY AND INTRODUCTORY COURSES



Some degree programs offer preparatory or introductory courses that take place before the actual start of the semester. For life science subjects, this can include mathematics refresher classes, while the humanities may involve language skills. Ask your department whether preparatory courses are offered and find out if they are mandatory. You can find a summary of preparatory and introductory courses on the "How to get started" website: [uni-tuebingen.de/en/3941](https://uni-tuebingen.de/en/3941)

## WELCOMING THE NEWLY ENROLLED – DIES UNIVERSITATIS



In the winter semester 2025/26, the traditional reception for new students will take place at the Hörsaalzentrum Morgenstelle – on Thursday, October 16<sup>th</sup>, 2025, at 5pm. At the Market of Opportunities (Markt der Möglichkeiten), also at the Hörsaalzentrum Morgenstelle, you will have the chance to get to know student groups and institutions. Further information will be available on the "Dies" website: [uni-tuebingen.de/en/5117](https://uni-tuebingen.de/en/5117)

### Other orientation activities



- ▶ Introduction to teacher training
- ▶ Information for new Master's degree students
- ▶ **Welcome program for international students**

All important introductory and orientation events are announced on the website „How to get started“: [uni-tuebingen.de/en/3941](https://uni-tuebingen.de/en/3941)



## Sustainability Day AK Umwelt

At the beginning of the winter semester, the student body's Environment Working Group (AK Umwelt) is offering a day full of events, including presentations by local action groups, joint activities, and more! You can find the latest information on Instagram. Please email us in advance if you would like to participate!

The event replaces „Let's nez!“ and will take place in the beginning of October. It is called „Nachhaltigkeitstag (Sustainability Day) AK Umwelt“.

With us, you can help and actively promote environmental protection and sustainability at the university! We organize exciting events and campaigns, implement concrete changes at the university, and engage in university politics to set the course for a more sustainable future. Concrete projects to date have included a cargo bike rental service, improvements to cafeteria food, the installation of water dispensers, and campaigns such as clothing swaps. Whether you have your own ideas or just want to lend a hand, come by and help us make the university more sustainable!

You can find more information about the program and registration on our homepage and our social media channels.

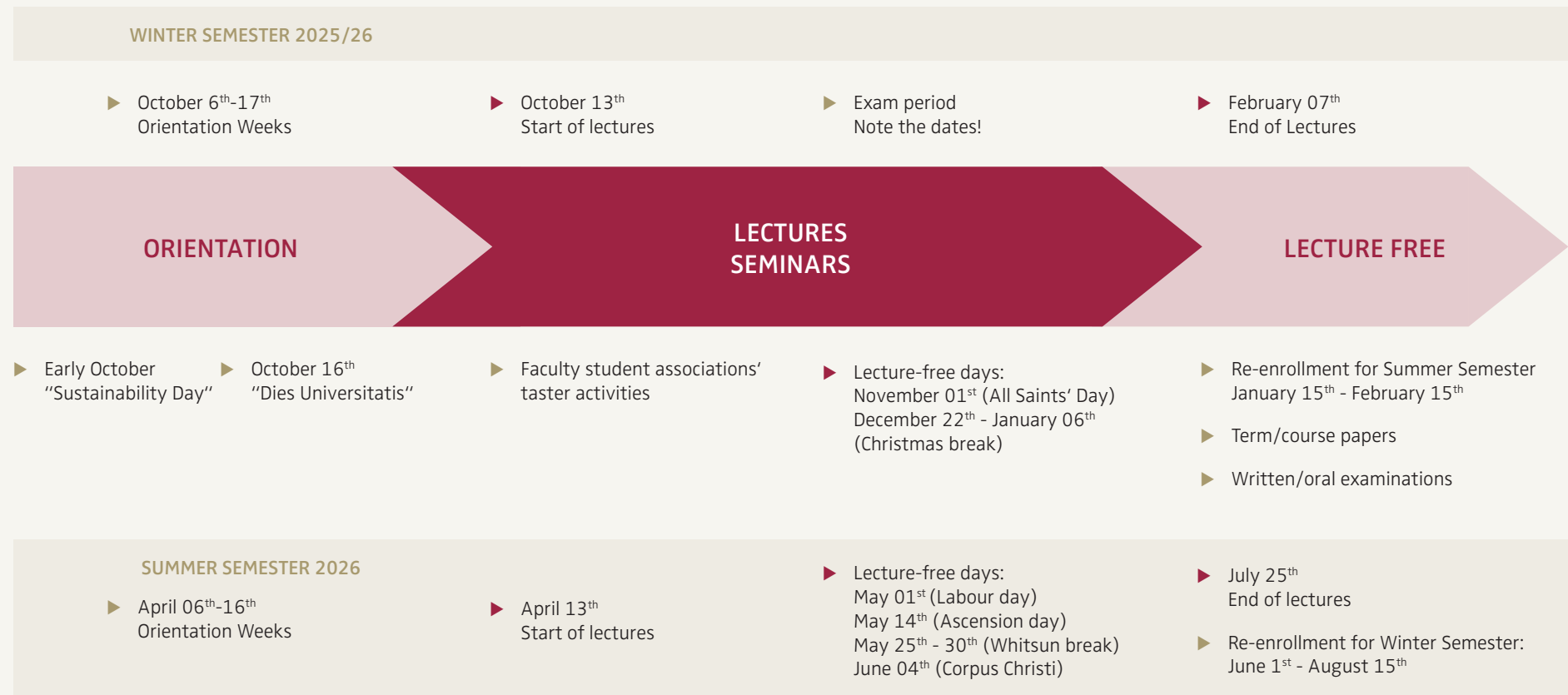


<http://www.vs-tuebingen.de/aks/umwelt/> • [info.umwelt@vs-tuebingen.de](mailto:info.umwelt@vs-tuebingen.de)



# Overview

General semester plan and key dates for the start of studies. Dates may change depending on the study subject and lectures/seminars taken.





# Check

Breathe deeply, keep calm –  
it may sound complicated but it isn't really...

## ... after matriculation

- ❑ **Matriculation records** can be printed out and stored using the alma portal. You will need them e.g. for a BAföG application, the semester ticket for public transport or the student residence administration: [alma.uni-tuebingen.de](https://alma.uni-tuebingen.de)
- ❑ **Semester tickets** can be purchased at the central station, in the tourist office on the Neckar Bridge, or online via the Deutsche Bahn website. They can be used throughout the semester to travel on all public transport in the naldo district. There are also several options for students to expand the area of validity. The semester ticket is only valid together with your student ID. [uni-tuebingen.de/en/958](https://uni-tuebingen.de/en/958)
- ❑ **Semester fees** are payable each semester. You can find out about outstanding fees and more information about deadlines on the alma portal.
- ❑ The **student ID card (chip card)** has many functions. You can find a list in the alma section of this brochure (p. 22). It is important to update it each semester. You can find a list of charging points and stamping machines at: [uni-tuebingen.de/en/949](https://uni-tuebingen.de/en/949)
- ❑ Set up your **student e-mail account and access to the alma portal** promptly (using the login data sent to you) and visit regularly, so as not to miss important messages.
- ❑ **Note important dates and deadlines**, e.g. start of term, lecture dates or payment deadlines before the start of the semester, likewise registration dates for preparatory courses, seminars and examinations, which can all vary depending on the degree program.

## ... before the semester starts

- ❑ **Preparatory and introductory courses** are offered by some degree programs before the start of the semester. They can, for example, refresh mathematics or foreign language skills. Your contact is the individual department or faculty student body. You can find details and dates at: [uni-tuebingen.de/en/113390](https://uni-tuebingen.de/en/113390)
- ❑ **Orientation weeks (O-Wochen)** offer shared semester entry to many degree programs for all first semester students and for students who are changing course. They provide insights into the content and organizational details and provide a chance to get to know each other. We recommend attending even where it is not mandatory. Extensive information about the Orientation weeks can be found on the website: [uni-tuebingen.de/en/3941](https://uni-tuebingen.de/en/3941)
- ❑ **General information events and brochures**, offered by the university, are highly recommended as they explain key questions and how to use important tools, and make the start of your studies easier.
- ❑ **The IT Center (Zentrum für Datenverarbeitung, ZDV) and the University Library (Universitätsbibliothek, UB)** offer introductions to the alma portal and to academic work, as well as guided tours of the library.
- ❑ **Mentoring programs** are offered by individual departments. They can provide contact with older students and other first-year students before the semester even begins.
- ❑ **Contact with the faculty student associations and fellow students** is especially important at the start of your studies. They can help you with all kinds of questions and make the start of your studies far easier by giving tips and providing a place to share experiences.



# List



Feedback: [uni-tuebingen.de/en/1472](https://uni-tuebingen.de/en/1472)



## ... at the start of the semester

- ❑ **Examination regulations and curricula** can be found in the directory of degree programs. They can give you an insight into the requirements and guidelines for examinations and course work: [uni-tuebingen.de/en/344](https://uni-tuebingen.de/en/344)
- ❑ **Module guides** are the bees knees. They offer a summary of everything you need to achieve in your studies and suggest a possible sequence in which you can take modules. Please do look into your respective module guides, as they can answer many questions in advance: [uni-tuebingen.de/en/344](https://uni-tuebingen.de/en/344)
- ❑ **Registration for courses** is done via the alma portal. There, you can generally find a summary of all classes you can take as part of a specific module. In the first semester, they start after the relevant introductory events (Orientation weeks).
- ❑ **Timetables** usually have to be compiled by you yourself. Introductory events, faculty student associations and course advisers can be points of contact if you need help with this. Always look at the module guide or the sample timetable for your subject first.
- ❑ **Registration in alma/ILIAS/Moodle** is important in order to receive information. Set up a profile with your key data. The account uses your student ID "zx..." and a password provided by the university. Please register promptly for your courses in the relevant portals after receiving your log-in data.
- ❑ **Set up your VPN client.** You can find instructions on how to do this on the IT Center's website.
- ❑ **Advice from students for students:** Counseling, for example by the student council or the "Verfasste Studierendenschaft": [uni-tuebingen.de/en/215317](https://uni-tuebingen.de/en/215317)  
For international students, among other things, Buddy programs are offered: [uni-tuebingen.de/en/93203](https://uni-tuebingen.de/en/93203)

## ... during your studies

- ❑ As part of the curriculum, there are multiple opportunities to attend multidisciplinary courses and gain certificates. Amongst others, offered by the **Transdisciplinary Course Program and Career Service (TRACS)** section and the **Foreign Language Center**.
- ❑ **Ask questions** of your fellow students, teachers, at information and advice centers, faculty student associations or on social media.
- ❑ Notes for **late starters:** If you have questions about organizing your studies, speak to the course advisers or other advice centers such as the faculty student associations. You can also contact the central Student Counseling Service (Zentrale Studienberatung, ZSB) with any unanswered questions.
- ❑ Notes for **international students:** Please register early for German language courses (p. 37).
- ❑ **Licenses** for Office 365 and other software are available to you as a student for free through the university.
- ❑ **Discounts** are available with your student ID card at various places, e.g. cultural institutions such as cinemas, museums and theaters.
- ❑ **Financing your studies:** Find out if you are eligible for BAföG, housing allowance, scholarships or student loans.
- ❑ Appointments to **register (or re-register) as a resident** must be made online at the residents' registration office (Einwohnermeldeamt) within two weeks of moving into your new home. Don't forget to bring your ID card/passport and the proof of residence certificate (Wohnungsgeberbescheinigung).









## Initial sources of (online) advice

The following Central Student Advisory Service websites will make your first few weeks at our university easier and offer important information for the start of your studies.

### HOW TO GET STARTED



A lot of things will be new to you when you arrive at the university. Over time you will become familiar with the university and its many faculties and the academic environment, but to save you some time, this website is there to help you find your feet:

[uni-tuebingen.de/en/3941](https://uni-tuebingen.de/en/3941)

- ▶ “Starting your Studies: A Guide”: this interactive PDF to download
- ▶ “Neu an der Uni – wie geht’s nun weiter?” (“New to the university – what now?”)
- ▶ Subject-related orientation events, preparatory and introductory courses
- ▶ Explanation of important study documents
- ▶ Central contacts and services

### GUIDE: STEP-BY-STEP THROUGH STUDIES



This online guide covers FAQs in connection with studying at the University of Tübingen. It introduces various offices and gives you advice on coping with a variety of situations:

[uni-tuebingen.de/en/139495](https://uni-tuebingen.de/en/139495)

- ▶ Choosing and applying for a degree program.
- ▶ Planning and organizing studies
- ▶ What to do if your studies don’t go smoothly
- ▶ Special personal circumstances

### UNI FROM A TO Z

From Academic Exchange to Student housing to the Writing Center – on this website you will find a comprehensive collection of all aspects concerning studies as well as the entire life cycle at the University of Tuebingen in alphabetical order. Here, you will be referred directly to the appropriate page, in accordance with your request: [uni-tuebingen.de/en/343](https://uni-tuebingen.de/en/343)



## Student Administration

Division IV – Student Affairs  
Section 1 – Student Administration  
Wilhelmstraße 19, 72074 Tübingen

! Current opening hours of the Student Administration:  
uni-tuebingen.de/en/596

We are here to support you with questions on the following subjects:

### RECORDS

After registration/re-enrollment you can access your enrollment record in the alma portal and print it out. You can also find other records there, e.g. for previous semesters or your pension fund. Please note, that records are not sent by post.

### RE-ENROLLMENT

In order to continue studying you have to re-enroll for the next semester within the period for re-enrollment at the end of each semester and pay the appropriate charges and fees. To re-enroll for the Summer Semester: fees and charges must be paid between January 15th and February 15th; to re-enroll for the Winter Semester: fees and charges must be paid between June 1 and August 15.

### CHIP CARD/STUDENT ID CARD

If your student ID card is stolen or lost please let us know as soon as possible so that it can be blocked in order to prevent abuse. Please also contact us if you have technical problems or other questions.

### CHANGE OF STUDY PROGRAM

If you want to change subject or degree you will have to re-register. You can re-register during the re-enrollment period.

### LEAVE OF ABSENCE

If you are unable to attend classes due to, for example, a study-related internship, care-giving responsibilities, or illness, you may apply for a leave of absence. You can apply to take a leave of absence for the next semester during the re-enrollment period at the end of the preceding semester.

### EXMATRICULATION

If you have ceased your studies or want to continue them at another university, you can exmatriculate at any time in writing. Usually, exmatriculation takes place at the end of the semester.



## Charges and Fees

Bank details: Universitätskasse Tübingen • Baden-Württembergische Bank AG • BIC: SOLADEST600 • IBAN: DE29 6005 0101 7477 5036 21

### SEMESTER FEES



Every student must pay the following fees for each semester:

- |   |          |
|---|----------|
| ► Fee for Studierendenwerk Tübingen-Hohenheim AöR:<br>(includes individual fee for naldo semester ticket) | 107,80 € |
| ► Administration fee:   | 80,00 €  |
| ► Students union (Studierendenschaft) fee:  | 12,00 €  |

Total:	199,80 €
--------	----------

In addition to the above, students in the inter-university Bachelor's degree program in Medical Technologies at the Universities of Tübingen and Stuttgart or in the cooperative degree program in Nursing Care (Bachelor) at the University of Tübingen and Esslingen University of Applied Sciences pay a solidarity contribution for the public transport system Verkehrsverbund Stuttgart (VVS) in addition to the above amount. The current amount can be found at: [uni-tuebingen.de/en/98038](https://uni-tuebingen.de/en/98038)

### PAYMENTS



Please note, you will not receive any postal reminders of outstanding charges and fees. You can see the amounts due in the alma portal. To re-enroll for the following semesters you must be sure to transfer the fees during the re-enrollment periods: from January 15 to February 15 of each year for the Summer Semester and from June 1 to August 15 of each year for the Winter Semester.

Please ONLY give your seven-digit student ID number as reference (Verwendungszweck); no further information should be given. There are a few circumstances when you do not have to pay the administration fee. You can find information about this, application forms and more details on your individual case at: [uni-tuebingen.de/en/32737](https://uni-tuebingen.de/en/32737)

### TUITION FEES FOR INTERNATIONAL STUDENTS AND FOR A SECOND DEGREE



Since the 2018/19 Winter Semester, some international students are being charged tuition fees at the University of Tübingen. Costs are payable for a second degree as well. You can find information at: [uni-tuebingen.de/en/31479](https://uni-tuebingen.de/en/31479)



#### STUDENT ID CARD FUNCTIONS

- ▶ Payments in canteens and cafeterias
- ▶ Payment and allocation of print and copy jobs (Follow-Me printing)
- ▶ Library card for the University Library
- ▶ Use with semester ticket (both must always be carried on local public transport)
- ▶ Admission to some buildings and rooms (e.g. IT Center ,ZDV')

Your student ID card must be renewed each semester to remain valid. You can do this at a suitable card terminal (University Library, Morgenstelle Lecture Center). If you lose your card or have technical problems, please contact the Student Administration.



# alma – The Teaching and Learning Portal



Studies have been largely organized electronically for some years in Tübingen. The alma portal for teaching and learning can support you with all important tasks: from creating your first timetable through to organizing examinations.

To use the alma portal you need a user ID, the login ID for your student e-mail address and the associated password. The Student Administration will send these data to you automatically by post after registration. If you ever forget or lose your password, you can request a new one by presenting your student ID card to the Student Administration.

The alma portal will offer an introduction each semester as part of the Orientation Weeks at the start of studies. You can find precise details on the “How to get started” page: [uni-tuebingen.de/en/3941](https://uni-tuebingen.de/en/3941)

**Do you have technical questions or problems with the alma portal?**

[alma-support@uni-tuebingen.de](mailto:alma-support@uni-tuebingen.de)  
[alma.uni-tuebingen.de](https://alma.uni-tuebingen.de)

## FUNCTIONS OFFERED BY THE ALMA PORTAL

- ▶ Electronic directory of lectures and courses
- ▶ Personal timetable and choice of courses
- ▶ Registration and deregistration for exams
- ▶ Grades overview: summary of your previous course work
- ▶ Print out your transcript of records of coursework and examination results
- ▶ Print out records (study progress, BAföG and matriculation record)
- ▶ Change of address (postal address and telephone number)

## YOUR STUDENT E-MAIL-ADDRESS

Your access data will be sent to you automatically after registration. The university uses this student e-mail address to send you important messages, so please check your e-mail account regularly and for communications with the university use exclusively this one: [webmail.uni-tuebingen.de](https://webmail.uni-tuebingen.de)





## Examinations Office

The examinations office administers students' examination results.  
Other important duties of the examinations office are:

### ANSWERING QUESTIONS IN RELATION TO EXAMINATIONS

If you have questions about the examination regulations or the module guides, your first point of contact are the examinations office or your course advisers.

### REGISTRATION AND DEREGISTRATION FOR EXAMS

Many of the modular Bachelor's/Master's programs require you to register for examinations online via the alma portal. Questions, problems and deadlines – the examinations offices are there to help you. For students of medicine, registration and admission for the state examinations take place via the Landesprüfungsamt Stuttgart, and for university examinations via the Academic Affairs Office of the Faculty of Medicine. Please address any questions concerning these examinations to them.

### WRITTEN CONFIRMATION

If you need a certified proof of your achievements (Transcript of Records), e.g. for studying abroad, for BAföG or an internship, please contact the examinations office or dean's office responsible for you.

### EXTENSION OF DEADLINES

If you are unable to take an examination within the stipulated period – for example in the event of sickness – you must apply to the examinations office to have the deadline extended.

### CERTIFICATE AND DIPLOMA

Once you have completed your studies successfully, the examinations office will issue your diploma and a certificate detailing your coursework/examination results, if necessary also translated into English. Students of medicine receive their certificate at the Landesprüfungsamt Stuttgart.



### CENTRAL EXAMINATIONS OFFICE OF THE UNIVERSITY OF TÜBINGEN



The Central Examinations Office is the primary contact for all examination-related issues affecting students from the following faculties:

- Faculties of Theology
- Faculty of Humanities
- Faculty of Economics and Social Sciences
- Faculty of Science

Central Examinations Office  
Wilhelmstraße 19, 72074 Tübingen  
[uni-tuebingen.de/en/120435](https://uni-tuebingen.de/en/120435)

You can find a list of the examinations offices/secretariats of the Faculty of Law, Faculty of Medicine and external examination offices here:  
[uni-tuebingen.de/en/2074](https://uni-tuebingen.de/en/2074)



## Important Tools

The following tools can make your first steps as a student easier. We recommend finding out which portals your department uses before the semester starts. Your course adviser, faculty student associations or older students can inform you about this.



alma

The alma portal is the main hub for organizing your studies. Here, you will find the course catalog, examination registration and your transcript of records. Furthermore, you can sign up for courses, create your timetable and download study certificates and information about re-enrollment. Instructions for students are available here: [uni-tuebingen.de/en/172188](https://uni-tuebingen.de/en/172188)



ILIAS

The places for study materials, meeting place for many seminars and a digital hub. Most teachers make their documents available on the learning and teaching platforms ILIAS or Moodle. So you should definitely register with them promptly. You can access them using your university login. Usually, the courses are also protected by a course password. This is normally given to you at the first class. You can find your classes in the directory tree (see alma). The teaching and learning platforms also provide a range of other tools, enabling you, for instance, to create study groups or use chat functions and quizzes, as well as allowing content to be made available in the form of files, videos, podcasts, etc. After logging in, you can find information about the tools at:

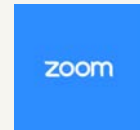
Repository > Home > Support for Lecturers > Howto für die digitale Lehre



catullus

Catullus is the digital examination system of the University of Tübingen. With a similar structure to ILIAS, it is exclusively used to prepare and conduct online examinations. If your teachers use it, they will tell you more about it. You can try out the test function in ILIAS via: Repository > Home > Support for Lecturers > Howto für die digitale Lehre > Test

BigBlueButton is integrated into ILIAS and Moodle as a video conference tool. For the foreseeable future Zoom will remain in use as the video conference tool at the university: [uni-tuebingen.de/en/35305](https://uni-tuebingen.de/en/35305)



Word, Excel and PowerPoint are essential day-to-day tools when studying. You can integrate your university and your private e-mail addresses in Outlook. As a student, you are also entitled to 1 TB online memory in OneDrive. Some lectures use Microsoft Teams for discussions. To use the Microsoft 365 services, you must register: [uni-tuebingen.de/en/161440](https://uni-tuebingen.de/en/161440)



You can find more information about important tools on the digital teaching website: [uni-tuebingen.de/en/teaching-staff/digital-teaching](https://uni-tuebingen.de/en/teaching-staff/digital-teaching)



ADVICE

## ... at all stages of your studies

There are numerous places at the University of Tübingen where you can seek advice before, during and after your studies.

### CENTRAL STUDENT COUNSELING SERVICE AT THE DIVISION OF STUDENT AFFAIRS

The Central Student Counseling Service is there for you throughout your studies. It provides advice and information on the transition from school to university and on planning, designing and successfully managing your studies. Topics can be, for example:

- ▶ Planning and organization of your studies
- ▶ Getting to know learning and working techniques
- ▶ Support in coping with exams
- ▶ Change of field of study and the development of new perspectives
- ▶ Support in dealing with study problems, stress and/or psychological strain
- ▶ Consideration of dropping out of studies
- ▶ (Possible) loss of the right to examination

The Student Counseling Service is a neutral body and treats your concerns confidentially—i.e. all details are kept secret. In consultations we endeavor to find the right solution for your personal situation.



### Division IV – Student Affairs

Section 3 – Central Student Counseling Service (ZSB)

Wilhelmstraße 19, 3. OG, 72074 Tübingen

+49 7071 29-72555

[zsb@uni-tuebingen.de](mailto:zsb@uni-tuebingen.de)

[uni-tuebingen.de/en/632](https://uni-tuebingen.de/en/632)



#### Consultation without appointment (on site)

Monday and Thursday	02.30 p.m. – 04.00 p.m.
Tuesday, Wednesday and Friday	10.30 a.m. – 12.00 p.m.



#### Consultation without appointment (by phone)

Monday and Thursday	01.00 p.m. – 02.30 p.m.
Tuesday, Wednesday and Friday	09.00 a.m. – 10.30 a.m.



#### Consultation with appointment (on site, by video or by phone)

[zsb@uni-tuebingen.de](mailto:zsb@uni-tuebingen.de)

+49 7071 29-72555

Please note that office hours/appointments may change.  
You can find the current office hours here: [uni-tuebingen.de/en/632](https://uni-tuebingen.de/en/632)



## TEACHER TRAINING



Students in teacher training programs can seek advice at the Tübingen School of Education (TüSE) on all organizational and content-related questions concerning their studies, as well as on their personal professional development, in a confidential setting.

[uni-tuebingen.de/en/60902](https://uni-tuebingen.de/en/60902)

## COURSE ADVISERS



Your contacts for issues relating to the content or organization of your degree program are the relevant course advisers in the faculties. The academic advisors also issue certificates confirming academic advising and the transferability of academic and examination credits. You can find a list of course advisers, who will be happy to help in person during office hours or by telephone and e-mail, at: [uni-tuebingen.de/en/92](https://uni-tuebingen.de/en/92)

## CAREER SERVICE AT THE ACADEMIC AFFAIRS DIVISION



The Career Service in the Transdisciplinary Course Program and Career Service section (TRACS) offers advice and coaching in German and English for all questions related to the transition from studying to professional life. Our wide range of advice services can provide personal and individual support for your questions in relation to careers guidance, profile development, application, and presenting yourself professionally in job interviews. This is complemented by a variety of web seminars on various topics, which can also put you in contact with potential employers.

### Division III – Academic Affairs

Section 4 – Transdisciplinary Course Program and Career Service (TRACS)  
+49 7071 29-77078

[uni-tuebingen.de/en/2767](https://uni-tuebingen.de/en/2767)

## ADVICE FOR INTERNATIONAL STUDENTS



International students who wish to complete a degree at the University of Tübingen (degree-seekers) can obtain information, advice and support from the Division IV Student Affairs. The Student Administration (Admission of International Students), can clarify questions regarding eligibility to study, admission and enrolment; it also advises on legal issues relating to immigration law. The General Student Counseling Service (ZSB) is the point of contact for support and advice throughout the course of studies. It advises on topics such as study organization and planning, exam preparation, dealing with personally difficult situations during studies, etc.

The Incoming Team of Division V International Office is the central point of contact for exchange students: The Incoming Team supports the application process and looks after exchange students. All contact persons can be found at: [uni-tuebingen.de/en/2](https://uni-tuebingen.de/en/2)

### Division IV – Student Affairs

Section 1 - Student Administration

+49 7071 29-76833

[study@uni-tuebingen.de](mailto:study@uni-tuebingen.de)

[uni-tuebingen.de/en/8935](https://uni-tuebingen.de/en/8935)

Section 3 - Student Counseling Service

+49 7071-29 76828

[kieran.tsitsiklis@zv.uni-tuebingen.de](mailto:kieran.tsitsiklis@zv.uni-tuebingen.de)

[uni-tuebingen.de/en/32727](https://uni-tuebingen.de/en/32727)

### Division V – International Office

Section 1 – Exchange programs (Incoming Team)

+49 7071 29-77797

[uni-tuebingen.de/en/90781](https://uni-tuebingen.de/en/90781)



## ADVICE ON STUDYING ABROAD



Students at the University of Tübingen who want to undertake a temporary study visit abroad through an exchange program can get advice from:

+49 7071 29-72479

[uni-tuebingen.de/en/890](https://uni-tuebingen.de/en/890)



### ADVICE FOR STUDENTS WITH A CHRONIC ILLNESS OR DISABILITY



Students with a chronic illness or disability receive comprehensive information and personal counselling throughout their studies at the Central Academic Counselling Service (ZSB) for all questions and problems that may arise in connection with a chronic illness or disability. The ZSB advises, for example, on planning and organizing your studies, coping with difficult situations during your studies, compensation for disadvantages, etc. You can find detailed information at: [uni-tuebingen.de/en/89](https://uni-tuebingen.de/en/89)

#### Appointments:

[zsb@uni-tuebingen.de](mailto:zsb@uni-tuebingen.de)  
+49 7071 29-72555

#### Advisers:

Katrin Motta (Dipl.-Psych.)  
Carmen Schüßler (Dipl.Theol.)  
Wilhelmstr. 19, 3. OG, 72074 Tübingen

[Katrin.Motta@uni-tuebingen.de](mailto:Katrin.Motta@uni-tuebingen.de)  
[Carmen.Schuessler@uni-tuebingen.de](mailto:Carmen.Schuessler@uni-tuebingen.de)  
[uni-tuebingen.de/en/632](https://uni-tuebingen.de/en/632)

### ADVICE ON ACADEMIC WRITING



Do you want to know how to narrow down your topic, need tips on structure or how to formulate things correctly? Do you want to have neutral feedback, or have you lost your thread? The Diversity-oriented Writing Center is the right place for questions like this and all other questions to do with academic writing. We offer personal advice with the goal of finding answers to your specific issues, and help you to develop individual solutions.

#### Division III – Academic Affairs

Wilhelmstraße 19, 72074 Tübingen  
+49 7071 29-76829, +49 7071 29-76830 oder +49 7071 29-76883  
[schreibzentrum@uni-tuebingen.de](mailto:schreibzentrum@uni-tuebingen.de)  
[uni-tuebingen.de/en/109835](https://uni-tuebingen.de/en/109835)

Some faculties also offer subject-specific help and support with academic writing. You can find a list of possible contacts and advice services for individual subjects at: [uni-tuebingen.de/en/109606](https://uni-tuebingen.de/en/109606)

### STUDYING AS A CAREGIVER



Gaining a degree and bringing up a child or caring for relatives at the same time – the university and associated facilities have a range of services to help you cope with this challenge. At the following places, you can obtain advice on balancing student life and caregiving and find out about child care options as well as measures to compensate for disadvantages.

#### Team Equity - Care

Team Equity - Care advises students on combining caregiving (child care and caring for the sick or elderly) with their studies.  
Wilhelmstraße 19, 72074 Tübingen  
+49 7071 29-74961  
[care@equity.uni-tuebingen.de](mailto:care@equity.uni-tuebingen.de)  
[uni-tuebingen.de/de/39962](https://uni-tuebingen.de/de/39962)

#### Studierendenwerk Tübingen-Hohenheim

[kita-tue@sw-tuebingen-hohenheim.de](mailto:kita-tue@sw-tuebingen-hohenheim.de)  
[my-stuwe.de/en/kita](https://my-stuwe.de/en/kita)





### TEAM EQUITY - GENDER EQUALITY



Students who feel that they are disadvantaged in their studies because of their gender and students who are affected by or have witnessed sexual harassment at the university can receive confidential advice and information at the Gender Equality Office.

Wilhelmstraße 19, 72074 Tübingen  
+49 7071 29-74958  
[gleichstellungsbuero@uni-tuebingen.de](mailto:gleichstellungsbuero@uni-tuebingen.de)  
[uni-tuebingen.de/en/45197](https://uni-tuebingen.de/en/45197)

### ACTIVE AGAINST STRESS – INDIVIDUAL CONSULTATION



Our consultation hours are open to all students who are suffering from stress, anxiety or similar problems in their studies. The consultation will provide personal tips and practical tools like breathing- and mindfulness exercises, to help you overcome day-to-day difficulties.

The consultation will be accompanied by a relaxation therapist. You can make an appointment on the Student Health Management BeTaBalance website:

[uni-tuebingen.de/en/183172](https://uni-tuebingen.de/en/183172)

+49 7071 29-76066  
[betabalance@ifs.uni-tuebingen.de](mailto:betabalance@ifs.uni-tuebingen.de)

### TEAM EQUITY - DIVERSITY



The Diversity Office supports the University of Tübingen to create a diversity and gender equality-based university culture, enabling all its members to develop and contribute their personal capabilities regardless of their gender, ethnic origin, age, social or religious background, disability or sexual identity. The Diversity Office offers advice and support, and mediates where university members suffer discrimination and disadvantage in their studies or the workplace.

Advisers:

Inken Köhler & Ulrike Thrien  
Wilhelmstraße 19, room 0.31, 72074 Tübingen  
+49 7071 29-74947 oder +49 7071 29-74946  
[diversitaetsbuero@uni-tuebingen.de](mailto:diversitaetsbuero@uni-tuebingen.de)  
[uni-tuebingen.de/en/158484](https://uni-tuebingen.de/en/158484)



## ... from students

Would you like to discuss study-related issues on equal terms with fellow students who have been here for a while?

### FACULTY STUDENT ASSOCIATIONS



The faculty student associations in various subjects and departments consist of students who want to assist others. They are one possible contact for problems of all kinds, and organize shared events for all new students in the first weeks of semester. They are always delighted to gain new comrades-in-arms: [uni-tuebingen.de/en/108](https://uni-tuebingen.de/en/108)

### MENTORING PROGRAMS



Many departments also offer mentoring programs for new students, and allocate specific students from a later semester to support you. More information can be found on the faculties' websites: [uni-tuebingen.de/en/5](https://uni-tuebingen.de/en/5)

### STUDIT



StudIT stands for "Studierenden-Initiative Internationales Tübingen" (Students' initiative for an International Tübingen) and is an offer for international exchange students. This initiative aims to make it easier for international students to start studying in Tübingen, as well as to promote the cooperation of international and German students. At the start of the semester there are special events, and throughout the semester there are intercultural activities and outings: [studit-tuebingen.de/en](https://studit-tuebingen.de/en)



### VERFASSTE STUDIERENDENSCHAFT – STUDENT UNION



You can find current information about the Verfasste Studierendenschaft (VS), as well as its event dates and advisory services, on the notice boards in the Clubhaus (Wilhelmstraße 30) or at the website of the Student Union: [vs-tuebingen.de](https://vs-tuebingen.de)

### NIGHTLINE TÜBINGEN



Nightline is a telephone support service provided by students for students. The service is available in many university cities. It is anonymous, confidential and non-judgmental. Volunteers offer a sympathetic ear to students' concerns, worries and problems. Reach out Monday through Thursday and on Saturdays from 9 p.m. – midnight on the phone (+49 7071 88 95 440) and in chat rooms (via the website). You can find more information at: [nightline-tuebingen.de](https://nightline-tuebingen.de)





## Other Sources of Support



### PSYCHOLOGICAL COUNSELING AND LEGAL ADVICE

If you get stuck with your studies, the following services can offer psychotherapeutic support. Naturally, all the trained counsellors and the services have a duty of confidentiality.

#### Psychotherapeutic Counseling Service at the student services

Tübingen-Hohenheim

+49 7071 253960 as well as online appointments via

[my-stuwe.de/en/advice/psychotherapeutic-counselling/](https://my-stuwe.de/en/advice/psychotherapeutic-counselling/)

#### Psychological Counseling Service run by the church

Brückenstraße 6, 72074 Tübingen

+49 7071 92990

[info@pbs-brueckenstrasse.de](mailto:info@pbs-brueckenstrasse.de)

[pbs-brueckenstrasse.de](https://pbs-brueckenstrasse.de)



#### Psychological Counseling Service at the Ev. Studierendengemeinde (ESG)

Karl-Heinz Schuldt

Poststraße 12, 72072 Tübingen

+49 7071 25066

[esg-beratungsstelle@t-online.de](mailto:esg-beratungsstelle@t-online.de)

[esg-tuebingen.de/hilfe-finden/seelsorge-und-beratung](https://esg-tuebingen.de/hilfe-finden/seelsorge-und-beratung)



Additional psychological counseling centers in Tübingen and the surrounding area can be found under: [uni-tuebingen.de/en/897](https://uni-tuebingen.de/en/897)

#### Legal advice at the Tübingen-Hohenheim student services

Make an appointment online for personal advice:

[my-stuwe.de/en/advice/legal-advice](https://my-stuwe.de/en/advice/legal-advice)



### INSURANCE COVER



You can find out which insurances are covered by your semester fee to the student services (Studierendenwerk) at: [my-stuwe.de/en/advice/insurance-policies](https://my-stuwe.de/en/advice/insurance-policies)





**COUNSELING FROM THE PROTESTANT STUDENT COMMUNITY (ESG)  
AND THE CATHOLIC UNIVERSITY COMMUNITY (KHG)**

**Personal appointments, spiritual guidance, pastoral care and guidance**

Reverend Professor Dr. Inge Kirsner, university pastor:  
ingeborg.kirsner@elkw.de

Reverend Ravinder Salooja, university pastor:  
ravinder.salooja@elkw.de

Wolfgang Metz, university chaplain and priest:  
wolfgang.metz@drs.de

Claudia Weiler, university chaplain  
claudia.weiler@drs.de

**Advice for foreign students**

**Office hours**

ESG: Wednesday 10.00 a.m. – 12.00 p.m. (Schlatterhaus)

KHG: Appointments by arrangement. (Erasmushaus)



ESG: Reverend Ravinder Salooja:  
ravinder.salooja@elkw.de

KHG: Marion Reinhardt:  
marion.reinhardt@drs.de



EXPLORE THE WORLD

# The World in Tübingen

International students like to come to Tübingen – and we welcome them here!

It is important to us that students from all over the world feel at home here. For this reason, the university has a number of special counseling and service offers for you:

[uni-tuebingen.de/en/2](https://uni-tuebingen.de/en/2) or via Instagram [@uni.tuebingen.international](https://www.instagram.com/uni.tuebingen.international)

International degree-seeking students should contact the following sections, which are part of the Division of Student Affairs:

## Admission of international students:

Application, enrollment, legal questions regarding foreigners

## Support for international students:

Housing, onboarding, peer-to-peer offers

## Central Student Advisory Service

Advice for international students during their studies

All contact details are listed here: [uni-tuebingen.de/en/2](https://uni-tuebingen.de/en/2)

If you are coming to Tübingen on a bilateral exchange or with the ERASMUS or CIVIS program, please contact the International Office (Division V) for all matters:

## Incoming Team – Exchange Programs

+49 7071 29-77797

[uni-tuebingen.de/en/90781](https://uni-tuebingen.de/en/90781)

[incoming@zv.uni-tuebingen.de](mailto:incoming@zv.uni-tuebingen.de)

## CHECKLIST FOR INTERNATIONAL STUDENTS

- ☐ Detailed information about **your enrollment** will be provided with your admission letter.
- ☐ Check your **health insurance status**: In order to study at the University of Tübingen, you must have a health insurance that is recognized and valid in Germany. This insurance status must be transmitted electronically from a statutory German health insurance company to the University of Tübingen.
- ☐ **Pay the semester fee** (keep the proof of payment).
- ☐ Apply for **registration at the residents' registration office** (Bürgeramt), Schmiedtorstraße 4, 72070 Tübingen. Appointments are made online: [www.tuebingen.de/verwaltung/dienststellen#/auslaenderamt](https://www.tuebingen.de/verwaltung/dienststellen#/auslaenderamt) Don't forget to bring your passport and the proof of residence certificate (Wohnungsgeberbescheinigung).
- ☐ **German courses**: If you would like to improve your German during your stay, find out in time which language courses are offered and when the registration dates are.

## Please check out the FAQ:

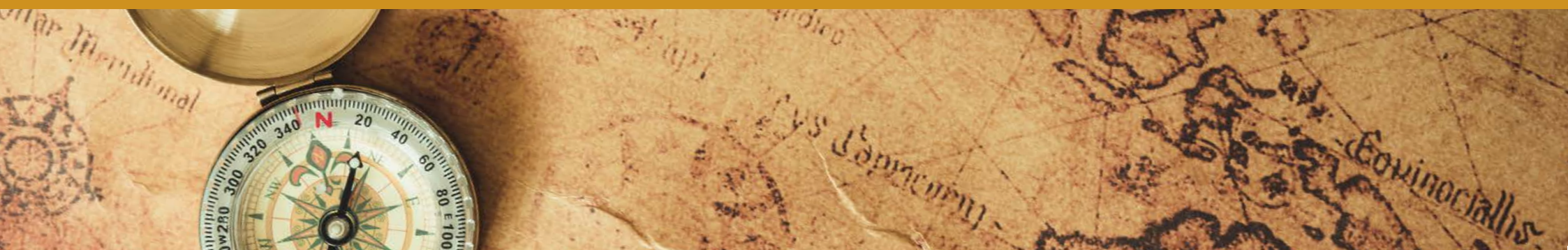
FAQ degree-seeking

[uni-tuebingen.de/en/88370](https://uni-tuebingen.de/en/88370)

FAQ Exchange programs

[uni-tuebingen.de/en/90781](https://uni-tuebingen.de/en/90781)





## ORIENTATION EVENTS FOR NEWLY-ARRIVED INTERNATIONAL STUDENTS



Numerous information and orientation events for newly arriving international students will take place during the official orientation weeks from October 6<sup>th</sup> -17<sup>th</sup>, 2025 and in the weeks before the semester begins. The Student Affairs Division and the International Office will help international students with questions about housing, residence permits and enrollment.

The “**Advisory Course for International Students**” helps with getting started in everyday day student life. The course covers, e.g.:

- ▶ A tour of the campus and the town
- ▶ Help with enrollment (health insurance, registering with the city, opening a bank account)
- ▶ Schedule advice and referrals to specific academic advisors

Orientation weeks: [uni-tuebingen.de/en/3941](https://uni-tuebingen.de/en/3941)

Consulting Course: [uni-tuebingen.de/en/99852](https://uni-tuebingen.de/en/99852)

### Accommodation

As part of the housing search and placement process, the University offers counseling. Housing consultation appointments can be booked online: [uni-tuebingen.de/en/224925](https://uni-tuebingen.de/en/224925)

## STUDENTS HELPING STUDENTS



### StudIT

The “Student Initiative International Tübingen” (StudIT) is a group of Tübingen students who want to make it easier for international exchange students to start their studies in Tübingen and to promote cooperation between international and German students. There are events at the beginning of the semester as well as intercultural activities and excursions during the semester: [studit-tuebingen.de/en](https://studit-tuebingen.de/en) or via Instagram [@studit\\_tuebingen](https://www.instagram.com/studit_tuebingen)

### Get-Together program and International Coffee Hour

Students offer events and excursions for international degree-seeking students. Their goal is to build an international community and make you feel welcome in Tübingen. At the weekly Coffee Hour, you can find coffee, tea, cookies and good conversation on current topics: [uni-tuebingen.de/en/253991](https://uni-tuebingen.de/en/253991)

### Buddy Programs

Experienced Tübingen students support new international students as buddies:

[uni-tuebingen.de/en/93203](https://uni-tuebingen.de/en/93203)

### Student Union (Verfasste Studierendenschaft)

For current information and dates on the student council’s services, please see the notice boards in the Clubhaus, Wilhelmstr. 30 or visit:

[vs-tuebingen.de](https://vs-tuebingen.de)





Division V – International Office  
 Section 2 – German as a foreign language and intercultural programs  
 Wilhelmstraße 22, 72074 Tübingen

+49 7071 29-75409  
[info@daf.uni-tuebingen.de](mailto:info@daf.uni-tuebingen.de)

Office hours:  
 Monday to Thursday  
 10.00 a.m. – 12.30 p.m. and 2.00 – 4.00 p.m.

Program and information about registering:  
[uni-tuebingen.de/en/1056](http://uni-tuebingen.de/en/1056)



## GERMAN LANGUAGE COURSES AND INTERCULTURAL PROGRAMS



The German as a foreign language and intercultural programs section in Division V (International Office) offers numerous courses and programs to help you make a success of your study visit to Tübingen, improve your German and get to know Germany and the Germans better.

In March and September of each year, the section holds preparatory courses for international students. Along with the language lessons, these courses help with social, cultural and academic orientation at the university and in the city of Tübingen. During the semester, there is an extensive program of language courses and seminars on intercultural and local cultural topics, including special courses and advice services on “German for your studies”. In addition, there is one-to-one advice on writing and an intercultural consultation hour. For PhD students, Master’s degree students and guests of the university there are special evening or early morning courses. Every year in August, there is a four-week course on German language and culture.

If you need proof of your linguistic ability in order to study in Tübingen, you can take a TestDaF examination in the section (DaF = Deutsch als Fremdsprache [German as a foreign language]). There are two TestDaF examinations held each year. Before these exams, you can attend a preparatory course if you wish. You can find more information on the website: [uni-tuebingen.de/en/260481](http://uni-tuebingen.de/en/260481)

## ... AND FOR GERMAN STUDENTS

German students can broaden and deepen their intercultural skills on intercultural communication courses and workshops together with international students. They can also qualify in German as a foreign language as part of the DaF-Bausteine training program, as well as gaining practical teaching experience as trainees and tutors and with it a practical qualification in preparation for a career. The courses also provide ECTS points (Credit Points) as a key qualification in a professional skill.

## ... FOR GERMAN AND INTERNATIONAL STUDENTS



Have you heard of ‘TANDEM’ language exchanges? An intercultural language tandem is designed for international students who want to improve their conversational skills and get to know German students and for German students who want to improve or practice their language skills and capabilities in another language.

The Section’s Tandem program organizes language partnerships:  
[uni-tuebingen.de/en/1088](http://uni-tuebingen.de/en/1088)



## From Tübingen into the World

Division V – International Office  
Section 1 – Exchange programs  
Wilhelmstraße 9, 72074 Tübingen

Spending time abroad during your studies is compulsory for some subjects and is highly recommended for all students. International experience is increasingly sought-after for skilled occupations. The University of Tübingen can offer you ideal opportunities for international mobility. You can select from exchange programs with around 600 colleges and universities in 74 countries! In general, the tuition fees abroad will be exempted on the basis of these programs. More information: [uni-tuebingen.de/en/890](https://uni-tuebingen.de/en/890)

Prepare to take time abroad well in advance. You can find out about the various options from the website of the International Office.

The course “Developing intercultural skills” can assist you before, during and after time abroad. You can find information about the three modules at:  
[uni-tuebingen.de/en/112626](https://uni-tuebingen.de/en/112626)



+49 7071 29-77736  
**Office hours**  
Tuesday und Thursday  
09.00 a.m. – 12.00 p.m.

[studinfo@uni-tuebingen.de](mailto:studinfo@uni-tuebingen.de)  
**Opening hours “Info-Theke”**  
Monday, Tuesday, Thursday and Friday  
09.00 a.m. – 12.00 p.m.



### AT HOME – INTERNATIONALLY

On top of the variety of academic activities offered in Tübingen, there are numerous opportunities at the university to make international contacts and gain intercultural experience or prepare for an intercultural field of work. You can, for example, take part in the activities of the StudIT group or a Buddy program, form a language tandem, attend courses at the German as a foreign language and intercultural program section, or enhance your foreign language skills in certified courses and learn skill-oriented content, tailored to your course, profession or region.

### FOREIGN LANGUAGES



The Foreign Language Center (FSZ) offers the following options:

- ▶ Improve your general and professional terminology skills in various languages and at various levels
- ▶ Prepare your languages and cultural skills for an internship abroad or your profession
- ▶ Preparatory workshops for the TOEFL test and acquiring UNIcert certificates

More information about what the Foreign Language Center has to offer:  
[uni-tuebingen.de/en/55335](https://uni-tuebingen.de/en/55335)





#### INTERNATIONAL PARTNERS OF THE UNIVERSITY

- ▶ Partner universities in Europe (Erasmus+)
- ▶ Partner universities outside Europe





# UNIVERSITY AND FACULTIES

# Faculties

You can find a list of all faculties and contacts online:  
[uni-tuebingen.de/en/5](https://uni-tuebingen.de/en/5)



The basic organizational component of a university is the “faculty”. A faculty is a teaching and administrative unit of related or associated sciences or fields of knowledge. The faculties are responsible for the organization of research, teaching and learning in their respective disciplines. As well as teachers and students, the members of a faculty also include non-academic staff. At the University of Tübingen, there are seven faculties which we would like to introduce in the following pages.

At the head of a faculty is the dean, who is responsible for the development of the faculty. On behalf of the faculty, they sign the degree certificates, confirming the teaching qualification for those qualifying to become a professor (Habilitation), and in the case of doctorates the PhD certificate.

The faculty is managed by the faculty board. This includes the dean and, as their deputy, a vice-dean as well as additional vice-deans and a dean of studies. Together, they form the leadership of the faculty executive board, the central management and administrative body of a faculty. If students have complaints, they are advised to contact the dean of studies first, who is the special representative for academic teaching. Another body is the faculty council, which advises the faculty board. However, there are decisions that cannot be taken without the consent of the faculty council. These include, for example, the structural and developmental plans of the faculty, the formation, suspension or alteration of faculty establishments and the faculty’s study and examination regulations. In addition to all members of the faculty board and the heads of academic institutions of a faculty, the faculty council also includes representatives of the mid-level faculty (usually without a professorship) and student members.





## Faculty of Protestant Theology

Liebermeisterstraße 12, 72076 Tübingen

Dean of Studies: Prof. Dr. Gerald Kretzschmar

The study of Protestant Theology offers a variety of opportunities to deal with religious and philosophical questions. The degree program is the first stage on the path to becoming a pastor or teacher, but it also opens up further professional perspectives. Basic qualifications such as language competence, historical knowledge and systematic thinking are acquired during the study program. The following degree programs are offered at the Faculty of Protestant Theology: Divinity degree, Diploma, Bachelor/Master of Education, and Bachelor of Arts (minor). The Bachelor and Master of Arts in Jewish Studies programs are offered jointly by the faculties of Protestant Theology and the Humanities. The Faculty of Protestant Theology also cooperates with the Faculty of Catholic Theology and the Center of Islamic Theology to offer the Master of Arts in Interfaith Studies.

The Faculty of Protestant Theology at the University of Tübingen is one of the largest and most prestigious locations for Protestant Theology in Germany. Core research areas include Biblical Archaeology, Jewish Studies, Ethics, Late Middle Ages and the Reformation, Hermeneutics and Dialogue of Cultures, and the protestant preaching institute. Tübingen has one of the largest theological libraries, which provides workspaces in a beautiful atmosphere. The nearby University Library, with its specialist information service (FID), as well as other libraries on campus provide easy access to specialized literature.

The Faculty of Protestant Theology is connected with the Faculty of Catholic Theology and the Center for Islamic Theology via the Campus of Theologies. In addition, interdisciplinary cooperation is maintained with numerous other disciplines - from archaeology to psychology, from history to philosophy.

[uni-tuebingen.de/en/54849](http://uni-tuebingen.de/en/54849)



Theologicum – Liebermeisterstr. 16

The faculty is internationally linked with many universities beyond the ERASMUS program, especially via study programs in Jerusalem.

At the beginning of the semester there is an orientation event for first-year students of Protestant Theology. Current information and dates can be found on this page:

[uni-tuebingen.de/en/154884](http://uni-tuebingen.de/en/154884)



### EVANGELISCHE STUDIERENDENGEMEINDE (PROTESTANT STUDENTS' ASSOCIATION, ESG)

The ESG is a place for young people during their studies. It offers opportunities to connect through its meaningful content, in church services and community actions. Community, whether planned or ad hoc, and communication are important to us. The ESG is run jointly by students and their pastors. It is possible to join in at any time. The Schlatterhaus and the Dietrich-Bonhoeffer-Haus have rooms for accommodation, celebrations and learning.

Österbergstr. 2 (Schlatterhaus), 72074 Tübingen  
+49 7071 23097

Berliner Ring 8-12 (Dietrich-Bonhoeffer-Haus), 72076 Tübingen  
+49 7071 61928

[esg-tuebingen.de](http://esg-tuebingen.de)



### KATHOLISCHE HOCHSCHULGEMEINDE (KHG) (CATHOLIC HIGHER EDUCATION ASSOCIATION, KHG)

The KHG is a place for students and academics from every faculty. It offers a counterbalance to day-to-day studies, the chance to develop your own personality and to be inspired to live your life by the Christian faith. The KHG is directed and run by students. You are welcome to join in at any time.

Belthlestr. 40 (Erasmushaus), 72074 Tübingen  
+49 7071 944 611

[khg-tuebingen.de](http://khg-tuebingen.de)



## Faculty of Catholic Theology

Liebermeisterstraße 16, 72076 Tübingen

Dean of Studies: Dr. Reinhold Boschki

Course adviser: Dipl. theol. Christian Gers-Uphaus, M.A.

Catholic Theology is devoted to the scientific study of the Christian faith as it is attested in the Bible, as it has developed (amongst others, in its Catholic form) and as it is to be answered for in the face of the challenges of today's world. Altogether, there are 14 sub-disciplines in Catholic Theology that make it particularly versatile with their different perspectives and methods.

The faculty cooperates with the Protestant and Islamic Theology as well as with other subjects at the university, with which interesting connections often arise. Thus, in a climate open to dialogue, the discussion with other denominations, religions and world views is actively sought and dealing with the findings of "neighboring" sciences plays an important role.

Since relatively few students are enrolled at our faculty, there are often small study groups. This allows for individual attention and a personal, familiar atmosphere. In addition to the studies, the student council and the institutes of ecclesiastic study support (e.g. theological mentoring) offer numerous activities, spiritual offers and sharing opportunities for students.

First-year students and transfer students should definitely attend the introductory event, which is offered in the summer and winter semesters in the week before lectures start. For further information about Catholic Theology and our degree programs (B.A., B. Ed., Mag. theol. and M.A. Interfaith Studies) please visit:

[uni-tuebingen.de/en/6354](http://uni-tuebingen.de/en/6354)







## Faculty of Law

Geschwister-Scholl-Platz, 72074 Tübingen

Dean: Prof. Dr. Christine Osterloh-Konrad

Dean of Studies: Prof. Dr. Bernd Hecker

The University of Tübingen's Faculty of Law is housed in the central university building Neue Aula. The Faculty of Law has had a reputation stretching well beyond state borders for more than 500 years, and today has around 2,300 students and 20 professors. A sound education in the fundamentals and a highly practical training in specialisms form a solid basis for studies and a successful career.

With its worldwide connections, the Faculty of Law offers first-class conditions for making international contacts. To test the skills and knowledge they gain from lectures, practical exercises and case studies in a hands-on, realistic way, students have the opportunity to take part in five Moot Courts. Moot Courts are simulated proceedings in which teams from various universities act against each other, usually internationally. Our proximity to the state capital also enables close cooperation with those in practice: Stuttgart is home to central authorities and courts, as well as many renowned legal practices. The faculty's own library – the "Juristische Seminar" – has plenty of desks for individual and group work, an extensive stock of printed and electronic literature, and with generous opening hours offers an outstanding work atmosphere. The Faculty of Law's computer center provides a high-quality IT infrastructure, library and technical support as well as training on all important databases (which can also be accessed from home) and on literary research.

[uni-tuebingen.de/en/156141](https://uni-tuebingen.de/en/156141)



Neue Aula – Geschwister-Scholl-Platz

In addition, the faculty supports its students with the program "besser lernen": a wide range of options such as an exam-writing clinic, an exchange for learning groups, a mentoring program and the opportunity to reserve group workrooms digitally.

The Faculty of Law at the University of Tübingen also leads in the field of research. Scholarly work from Tübingen is highly regarded, whether it concerns the historic principles of the law, international private law, or areas such as international economic law, international civil procedural law, international criminal law and criminology. In addition, many professors throughout the Federal Republic of Germany have academic roots in Tübingen.

Law as a Bachelor's minor: [uni-tuebingen.de/en/157482](https://uni-tuebingen.de/en/157482)

### Certificate programs

Law-Ethics-Economics: [uni-tuebingen.de/en/168846](https://uni-tuebingen.de/en/168846)

Law and Rhetoric: [uni-tuebingen.de/en/173016](https://uni-tuebingen.de/en/173016)

### Course advisers

+49 7071 29-76775 oder +49 7071 29-72129

[studienfachberatung@jura.uni-tuebingen.de](mailto:studienfachberatung@jura.uni-tuebingen.de)





## Faculty of Medicine

Geissweg 5/1, 72076 Tübingen  
Vice-dean for Studies: Prof. Dr. Stephan Zipfel

The Faculty of Medicine at the University of Tübingen is one of the leading medical schools in Germany and is also among the most popular places to train internationally. It was one of the four founding faculties in 1477 – there is a long tradition of teaching here. The faculty has its own institution that supports the development of innovative teaching formats: the Tübingen Institute for Medical Education TIME.

The Faculty of Medicine is an education center for more than 4,000 students in the subjects of Medicine and Dentistry as well as various Bachelor's and Master's degree programs in Molecular Medicine, Medical Technologies, Neurosciences and Behavioral Sciences, Nursing Care, Midwifery Science, Infection Biology and Control, Population-Based Medicine and a doctoral program.

The Faculty of Medicine is guided by "SPIRiT": Student-oriented, Practice-based, International, Research-driven and Interprofessional in Tübingen. Our focus is on our students: team-based learning, quality-assured teaching with comprehensive evaluation, training in practical skills in the simulation center and interdisciplinary qualifications in the medical training center all contribute to successful studies. Students also have the option of gaining international experience by taking part in many worldwide exchange programs. The University of Tübingen's Faculty of Medicine has a strong reputation for research. The Faculty of Medicine has direct links with hospitals and research institutes, consequently the latest results are rapidly made available for practical use and teaching. This ensures a sound practical scientific and patient-oriented education.

[medizin.uni-tuebingen.de/de/medizinische-fakultaet/studium-und-lehre](https://medizin.uni-tuebingen.de/de/medizinische-fakultaet/studium-und-lehre)



## Faculty of Humanities

Keplerstraße 2, 72074 Tübingen  
Deans: Prof. Dr. Angelika Zirker und Prof. Dr. Dietmar Till  
Dean of Studies: Prof. Dr. Doreen Braynt

The Faculty of Humanities is home to humanities subjects that have an especially long tradition at the University of Tübingen. It was one of the original founding faculties in 1477 and was restored to this form in 2010, to emphasize the unity of the humanities. With an extraordinarily broad range of subjects in comparison to international standards, it covers more than 60 degree programs and has special focuses in the areas of languages and literature, Asian and Middle Eastern studies, archeology and ancient civilization studies, history and philosophy. A well-equipped institute library and numerous opportunities for study and research attract many international students and visiting academics each year. Numerous partnership agreements with universities all around the world enable students of the University of Tübingen to spend time or undertake studies abroad.

The faculty is divided into five departments; supervision and guidance of students and the organization of student interests is, however, mainly carried out in the institutes, and this is also where orientation events are held for new students. The institutes are spread across several sites throughout the city; you can find addresses and all other details on the relevant websites. The Faculty Executive Board is available to help with general issues and questions.

[uni-tuebingen.de/en/11450](https://uni-tuebingen.de/en/11450)





## Faculty of Economics and Social Sciences

**Academic Affairs Office:** Nauklerstraße 48, 72074 Tübingen

**Dean of Studies Economics:** Prof. Dr. Patrick Kampkötter

**Dean of Studies Social Sciences:** Prof. Dr. Petra Bauer

The Faculty of Economics and Social Sciences (WiSo) at the University of Tübingen combines nine subjects, around 5,000 students and more than 90 professors. We offer our students more than 50 different degree programs. In addition to this, there are educational offerings for all students in teacher training programs at the University of Tübingen.

The faculty is divided into two departments: the School of Business and Economics and the Department of Social Sciences. They incorporate the Hector Research Institute of Education Sciences and Psychology, the Ludwig Uhland Institute of Historical and Cultural Anthropology, the Institutes of Education, Political Science, Sociology, and Sports Science, the Methods Center, as well as the new Institute for Research on Far Right Extremism (IRex). As a result, the faculty covers a large area of Tübingen, from Europastraße to Lustnau, to the castle, the historic center and the central university campus.

Deans of the Faculty of Economics and Social Sciences are Prof. Dr. Taiga Brahm and Prof. Dr. Dominik Papies. The deans of studies of both departments and the WiSo Academic Affairs Office staff are important contacts for our students. The faculty student associations represent the interests of students on faculty bodies and offer guidance and support for organizing studies.

[uni-tuebingen.de/en/11301](https://uni-tuebingen.de/en/11301)

Institute of Historical and Cultural Anthropology: [instagram.com/ludwig\\_uhland\\_institut](https://www.instagram.com/ludwig_uhland_institut)  
Hector Institute of Education Sciences and Psychology: [instagram.com/hib.tuebingen](https://www.instagram.com/hib.tuebingen)



## Faculty of Science

**Central Management Office:** Auf der Morgenstelle 8, 72076 Tübingen

**Dean of Studies:** Prof. Dr. Kay Nieselt

[studium@mnf.uni-tuebingen.de](mailto:studium@mnf.uni-tuebingen.de)

The Faculty of Science (MNF) at the University of Tübingen unites the departments of Biology, Chemistry, Geosciences, Computer Science, Mathematics, Pharmacy / Biochemistry, Physics and Psychology. The faculty is characterized by its strong inter- and intra-faculty networking. Almost 8,850 students were enrolled in the broad range of courses with more than 90-degree programs in the winter semester of 2024/25. The faculty is currently involved in one CIVIS degree programme, with two more in the pipeline. It also offers a wide range of Erasmus exchange programmes. Outstanding students at the Faculty of Science (MNF) have a good chance of receiving funding through the 'Deutschlandstipendium'.

The faculty currently engages 159 professors (incl. co-optations), 16 junior professors and approximately 1,841 employees. Its research focuses range from pharmaceutical research, machine learning, microbiology, environmental and geosciences to quantum physics. The faculty is involved in the three Clusters of Excellence "Controlling Microbes to Fight Infections", "Machine Learning" and "Image-Guided and Functionally Instructed Tumor Therapies" as well as in five collaborative research centers and three Research Training Groups. The teaching staff ensures that students are introduced to research, involved in it and encouraged to conduct independent research during the course of their studies. This also applies to the training of future teachers.

[uni-tuebingen.de/en/11276](https://uni-tuebingen.de/en/11276)







Faculty of Science at Morgenstelle campus

For first semester students the Faculty of Science offers a broad range of support, especially at the start:

- ▶ Numerous mathematical preparation courses
- ▶ Mentors and study advisers to help with organization and academic questions or problems
- ▶ Faculty student associations from the respective subjects offer a variety of orientation events and opportunities to get to know one another



## Center of Islamic Theology (ZITH)

Liebermeisterstraße 18, 72070 Tübingen

Chair of the Study Commission: Prof. Dr. Ruggero Vimercati Sanseverino

At its founding in 2011, the Center for Islamic Theology (ZITH) was the first center of its kind at a German university. The Center is structured along faculty lines and offers a broad and well-founded course of study with practical components that prepares its students ideally for professional life. Thanks to its excellent university-internal and international network, the ZITH offers ideal conditions for intensive, interdisciplinary, interreligious, and intercultural exchange.

Today, ZITH offers eight degree programs: "Islamic Theology" (B.A. / Mono), "Islamic Theology Major" (B.A.), "Islamic Theology Minor" (B.A.), "Islamic Religious Education" (B.Ed. / M.Ed.), "Islamic Theology in a European Context" (M.A.) and "Practical Islamic Theology for Chaplaincy and Social Work" (M.A.). In cooperation with the Faculty of Catholic Theology and the Faculty of Protestant Theology, the ZITH offers the Master's program "Interfaith Studies". Together with the faculties of Protestant and Catholic Theology the ZITH forms the „campus of theologies“.

Information on studying at the ZITH, the course catalog, the curriculum and the module handbooks can be found on the following website:



Center of Islamic Theology

[uni-tuebingen.de/en/134107](https://uni-tuebingen.de/en/134107)



# attempto!

## I dare!

After Count Eberhard the Bearded returned from a pilgrimage to Jerusalem, he chose the palm tree as his personal symbol. Wooden pillars in the Burse, the oldest university building still in use today, show the engraved palm tree along with the motto of the Count, which remains the motto of the university today.

# EBERHARD KARLS UNIVERSITÄT TÜBINGEN



The University of Tübingen bears the names of two historic personalities: Eberhard the Bearded and Karl Eugen. However, both are controversial. Eberhard held anti-Semitic views, while Karl Eugen ruled authoritatively and engaged in human trafficking with soldiers. Many students therefore ask themselves: Are such names still appropriate for a modern, cosmopolitan university? A commission has addressed this question. More here: <https://uni-tuebingen.de/en/231839>

# TEACHER TRAINING

# Tübingen School of Education (TüSE)

Wilhelmstraße 31, 72074 Tübingen  
[uni-tuebingen.de/en/75417](https://uni-tuebingen.de/en/75417)



Do you want to become a teacher? The Tübingen School of Education (TüSE) is the place for teacher training at the University of Tübingen. As a cross-faculty academic institution, the TüSE takes care of all related matters.

Do you have any questions? We will try to find answers together - whether with regard to your specific study situation, additional practical experience, a stay abroad, questions about scholarships or a doctorate. We are the people to contact if you are studying at the University of Tübingen to become a teacher.

## TÜSE TEACHER TRAINING INFORMATION AND ADVICE CENTER



Information about teacher training (incl. information events and material available to download) and advice in various forms (general advice, personal advice, vocational advice).

Wilhelmstraße 31, Raum 005+006  
[studienberatung@tuese.uni-tuebingen.de](mailto:studienberatung@tuese.uni-tuebingen.de)  
[uni-tuebingen.de/en/60884](https://uni-tuebingen.de/en/60884)



### Office hours

Telephone consultation (without appointment) for simple organizational questions: +49 7071 29-75402

Monday, Wednesday, Friday

09.00 a.m. – 11.30 a.m.

Consultation for complex organisational or personal matters is by appointment, during telephone consultation times (+49 7071 29-75402) or by e-mail:

[studienberatung@tuese.uni-tuebingen.de](mailto:studienberatung@tuese.uni-tuebingen.de)

### Overview of advice services:

[uni-tuebingen.de/en/60902](https://uni-tuebingen.de/en/60902)



Please note that the advice services and office hours may change if necessary. You can find up-to-date information on our website:

[uni-tuebingen.de/en/75417](https://uni-tuebingen.de/en/75417)





#### ACADEMIC ADVISORY SERVICE FOR TRAINING TO TEACH AT VOCATIONAL SCHOOLS



Students in the Bachelor of Education in Social Pedagogy/Pedagogy degree program and general education (advanced training to teach at vocational schools) are supervised by Dr. Gabriele Müller:

Münzgasse 26, Raum 108

+49 7071 29-74120

[berufliches-lehramt@ife.uni-tuebingen.de](mailto:berufliches-lehramt@ife.uni-tuebingen.de)

[uni-tuebingen.de/en/159358](https://uni-tuebingen.de/en/159358)





### EDUCATION SCIENCE STUDIES (BWS)



An important element of the Bachelor-Master degree program for the teacher degree for German secondary schools is Education Science Studies (BWS). This prepares students for academically-based, professional work in schools and lessons and is designed in particular for Master's students.

During the Bachelor's degree, students learn about fundamental pedagogic issues. The academic introduction to the orientation internship and its follow-up enable you to reflect on your initial practical experiences in school and examine your choice of career.

During the Master's degree, students develop and expand their knowledge of Education Science issues in the fields of school education, inclusion, diversity and heterogeneity, empirical education research and digitalization, as well as undertaking an in-depth module with their own focus. Students gain further "chalk-face" experience during their practical semester.

All Education Science Studies courses can be found in the alma portal under "Bildungswissenschaftliches Angebot für Lehramtsstudierende" (Education Science Studies for student teachers). You can register for courses online.

Contact: PD Dr. Dr. Martin Harant  
martin.harant@uni-tuebingen.de

You can find more information here: [uni-tuebingen.de/en/62427](https://uni-tuebingen.de/en/62427)

### INFORMATION FOR FIRST-YEAR STUDENTS

Here, you will find all the information you need to get started on your teacher training: [uni-tuebingen.de/en/214450](https://uni-tuebingen.de/en/214450)

e.g.:

- ▶ Dates for info events
- ▶ extended Information on the webpages and social media
- ▶ Examination regulations
- ▶ and much more...





# FACILITIES AND SERVICES

# The University Library – one for all

Wilhelmstraße 32, 72074 Tübingen  
information@ub.uni-tuebingen.de  
+49 7071 29-72846

Together with around 40 institute and department libraries, the University Library (UB) is responsible for the provision of information at the university. Most of the stock can be borrowed, while electronic articles (e-books, e-journals and databases) can usually also be accessed en route or at home. The website is the starting point for all information and services of the University Library. The information desk staff are there to answer your questions personally. The University Library offers guided tours and information events, and a lot of introductory information has already been converted to digital formats.

## THE UNIVERSITY LIBRARY – A PLACE TO LEARN AND WORK



The University Library on Wilhelmstraße consists of four interlinked buildings. Digital information columns provide signage to help you find your way around. In total there are 1,200 desks for individual and group work; you can find free spaces using Seatfinder: [vergil.uni-tuebingen.de/seatfinder/seatfinder.html](http://vergil.uni-tuebingen.de/seatfinder/seatfinder.html)

All buildings have WIFI. Computers with Internet access, printers, copiers, scanners, monitors and displays as well as whiteboards are available. The University Library also operates the eLearning support center for digitally-supported teaching in the Brechtbau (Wilhelmstraße 50) and the central eLearning platform ILIAS.



## INTRODUCTORY EVENTS TO HELP YOU USE THE UNIVERSITY LIBRARY



During the first weeks of the semester, there are usually daily tours (times vary) introducing how to use the library. You can register to take part in one of our tours on our website: [uni-tuebingen.de/en/83827](http://uni-tuebingen.de/en/83827)

During the semester, the University Library offers training courses on various topics, such as library use, research techniques/research tools, literature research with AI, literature management programs, etc.; dates can be found on the website below. For example, in the summer semester, you can take the e-learning course „Information Literacy Online“ for three ECTS credits, which teaches the basics of literature research, procurement, and management. Many training courses are also available as self-study courses. Information at: [uni-tuebingen.de/en/204697](http://uni-tuebingen.de/en/204697)

### Regular Office Hours

Monday to Friday	08.00 a.m. – 12.00 a.m.
Saturday, Sunday	10.00 a.m. – 10.00 p.m.



# universitäts bibliothek

## MAIN BUILDING

On the ground floor of the main building you will find a large seated area with space to study and debate, and a cafeteria.

One floor up, you will find learning centers with spaces for research, groups and individual desks. Behind the revolving door of lending services the place buzzes with activity dealing with loaned and returned media. Outside opening hours you can also return items using the returns box next to the main entrance.

## AMMERBAU/ALTE WASCHHALLE

From lending services you cross a bridge to the Ammerbau which has reading areas for quiet study, substantial reference holdings plus a collection of over 500,000 volumes which are available for lending. Internet workstations and bookable group workrooms with technical equipment (monitors, whiteboard) complete the range. A second bridge leads from the Ammerbau to the Alte Waschhalle where there are quiet desks and a sizable collection of volumes of periodicals which may be borrowed.

## BONATZBAU

In the striking historic building of the University Library on Wilhelmstraße, the historic reading room offers an especially peaceful atmosphere to study. In the left wing, the University Library offers courses and training in its training room (use of library, research tools and techniques, literature management programs, etc.). In the right wing you will find the manuscript repository where you can access old prints, manuscripts and archival records. The floor above houses the graphic collection of the Institute of Art History and the University Archive.

## UNIVERSITY ARCHIVE



The University Archive is the memory of the university and the central source of answers to all questions about the history of the university. Anyone who is interested can investigate the archives. Staff will provide support in the form of advice, information and making sources available. We recommend that you e-mail or telephone in advance in preparation for a personal visit to the archives. Regularly at the beginning of the semester, the archive offers an introductory event as part of the UB training program. On request, the archive team offers guided tours of the archive as part of courses.

### Tübingen University Archive

Wilhelmstraße 32, 72074 Tübingen

+49 7071 29-72857

[uat@uni-tuebingen.de](mailto:uat@uni-tuebingen.de)





### MORGENSTELLE SCIENCE CAMPUS

In the Natural Sciences branch library you will find mathematics and science literature (excluding medicine) and the collection of textbooks. You can work at individual desks or in groups. There are also computer workstations.

The neighboring "PCB-Bib", or library for Pharmaceuticals, Chemistry, Biology and Geosciences, has quiet work areas, group rooms and specialist computer stations.

#### Specialist science library

Auf der Morgenstelle 16 (Hörsaalzentrum), 72076 Tübingen

+49 7071 29-74229

[morgenstelle@ub.uni-tuebingen.de](mailto:morgenstelle@ub.uni-tuebingen.de)

#### Regular opening hours

Monday to Friday 08.00 a.m. – 04:30 p.m. / 04:00 p.m. (PCB-Bib)

Afterwards access via card-reader with your student-ID card until 07.45 p.m.

### MAPS OF WILHELMSTRASSE / MORGENSTELLE CAMPUS

The link offers online guidance around the Wilhelmstraße University Library Campus and the Morgenstelle Campus branch library: [tuebingen.artec-berlin.de](http://tuebingen.artec-berlin.de)



### PLEASE NOTE THE UP-TO-DATE INFORMATION ON OUR WEBSITE [uni-tuebingen.de/en/324](http://uni-tuebingen.de/en/324)

especially regarding

- ▶ Opening hours
- ▶ Trainings and
- ▶ Events



## ZDV – IT for the entire university

Zentrum für Datenverarbeitung (ZDV) IT Center  
Wächterstraße 76, 72074 Tübingen  
[uni-tuebingen.de/en/611](http://uni-tuebingen.de/en/611)

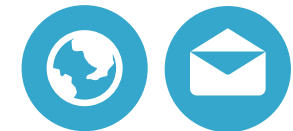
The ZDV (IT Center) provides the IT services at the University of Tübingen. It equips students, faculties and central institutes with an IT infrastructure and IT services that are the basis for successful learning, teaching and research.

From registration through borrowing books to your final examination, student life now takes place on the Net. Along with your matriculation you will receive an electronic ID, giving you access to the IT services of the entire university and to a high-performance network connected to more than 14,000 computers. You can also connect with the network via WIFI almost anywhere at the university.

All university members have a domain-specific e-mail address. The IT Center manages the technical platform for the university's web presence and develops apps that make it possible to access it with modern mobile devices.

Alma – the teaching and learning portal is more than an electronic form of course catalog: Organizing your studies, booking spaces on courses and finding rooms are just a few of the functions that can be dealt with efficiently via the web.

Modern devices offering a wide range of software are available directly in the Pool Rooms in Wilhelmstraße 106 and in Building C on Morgenstelle campus.



### E-LEARNING-PLATTFORMS

Together with the University Library, the IT Center operates eLearning platforms which provide course material as well as discussion forums, wikis, blogs and quizzes for course participants. The Tübingen InternetMultimedia System (timms) video platform holds over 7,000 hours of recorded lectures for courses from almost all disciplines taught at the university.

### COURSES

The IT Center offers IT courses for students covering a broad range of current topics, which can also be booked via the web: [uni-tuebingen.de/en/3652](http://uni-tuebingen.de/en/3652)

### GENIUS BAR

For students in particular, in addition to general advice, the Genius Bar with advice on notebooks and WIFI access is offered in the IT Center's rooms and the University Library. Depending on the situation, support may also be provided by telephone with remote administration via Teamviewer:

[uni-tuebingen.de/en/2613](http://uni-tuebingen.de/en/2613)  
[geniusbar@zdv.uni-tuebingen.de](mailto:geniusbar@zdv.uni-tuebingen.de)





# Foreign Language Center

Division V – International Office – International Student Affairs and Exchange Programs  
Section 3 – Foreign Language Center (FSZ)  
Wilhelmstraße 22, 72074 Tübingen

The Tübingen Foreign Language Center (FSZ) offers language courses at beginner and advanced levels. These also occasionally include specialist language courses. Language and intercultural skills are acquired that prepare students for the requirements of studying abroad, internships or academic careers. This enables students to improve their profile for the job market beyond their studies in a practice-oriented manner. Courses at the Foreign Language Center can be compulsory for some degree courses or serve as a key qualification. Students who still need to prove that they have a (second) foreign language for their studies are advised to take advantage of the Foreign Language Center's offerings early on, as it is often not possible to guarantee a course placement in the last semester due to high registration numbers and waiting lists.

We currently offer courses in Arabic, English, French, Italian, Modern Greek, Japanese, Catalan Romanian, Russian, Swedish, Spanish, Swahili and Wolof. They range from beginner level through to a near-native level, i.e. UNlcert I to UNlcert IV or A1 to C2 of the Common European Framework of Reference for Languages.

Courses in a variety of languages include: Grammar and Communication, Learn English with TED Talks, Round Table, Japanese V; or with a thematic orientation: Dialogo interculturale or Actualidad del Mundo Hispano; examples of specialized languages: Marketing et Internationalization or Medical English.

You can also acquire university-specific certificates (UNlcert) at FSZ as well as prepare for the TOEFL-Test. We also offer for a stay abroad DAAD language certificates for the participants of our courses. The FSZ's English, French and Spanish sustainability and ethics courses are recognized for the Studium Oecologicum certificate, while some courses are also eligible for the certificate Global Awareness.

Our language courses take place during the semester, as block courses, or as two- to three-week intensive courses between terms.

You can find more information and our current opening hours on our website:  
[uni-tuebingen.de/en/705](https://uni-tuebingen.de/en/705)

+49 7071 29-77407  
[fsz@uni-tuebingen.de](mailto:fsz@uni-tuebingen.de)



## Diversity-oriented Writing Center

Division III – Academic Affairs  
Wilhelmstraße 19, 72074 Tübingen  
[schreibzentrum@uni-tuebingen.de](mailto:schreibzentrum@uni-tuebingen.de)

### ALL ABOUT ACADEMIC WRITING

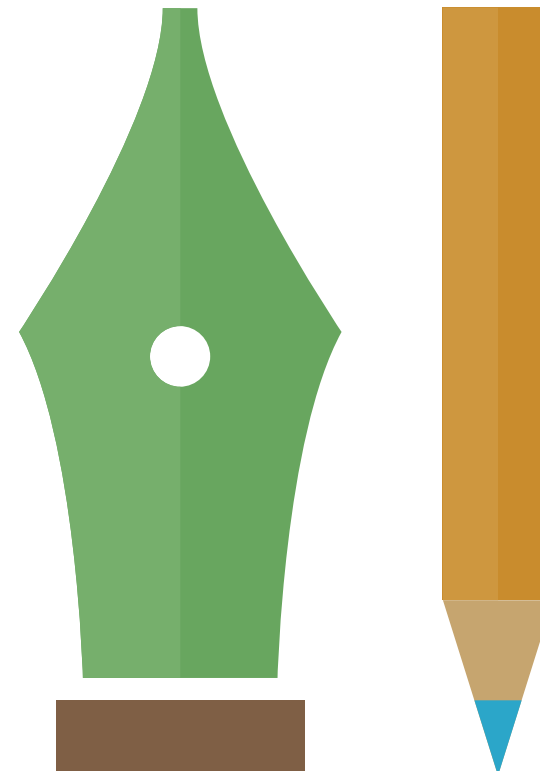
The Diversity-oriented Writing Center is the place to go for all questions concerning academic writing. From workshops to open and individual advice on writing, to writing events: here, you will find help and support for the creation of academic texts.

Our practice-oriented workshops will give you the necessary tools to tackle your writing projects. Our advisory services will guide you through the process of writing. Together we will find answers to your specific issues and support you in developing individual solutions.

We hold regular writing events that offer the opportunity to focus on your writing project together with other students. You can enjoy the special atmosphere of writing in a group and if you have any questions our advisers are there to help. The largest event of this kind is the “Long Night Against Procrastination” which we have held in Tübingen every March since 2011. Several hundred Tübingen students take part in this event each time.

As well as comprehensive information about our activities, you will also find an overview of other workshops, advice services and tutorials on academic writing on our website. In addition, there is a collection of teaching and practice material:

[uni-tuebingen.de/en/109835](https://uni-tuebingen.de/en/109835)





# Transdisciplinary Course Program and Career Service

Division III – Academic Affairs

Section 4 – Transdisciplinary Course Program and Career Service (TRACS)

Keplerstraße 2, 72070 Tübingen

The Transdisciplinary Course Program and Career Service section in Division III combines these services to help at the interface between studying, gaining experience and career. In the Transdisciplinary Course Program you can acquire key qualifications and gain orientation relevant to your studies and career. Our Service Learning format also promotes and supports civic engagement while you study.

From the first day of your studies, the Career Service is there to offer you wide-ranging advice and courses on topics such as careers guidance, research into internships and job interviews. To introduce you to potential employers we put on a Career Day, the Online Talk and a Jobs and Internships Fair. You can find a number of job offers in the central internships portal.:

[uni-tuebingen.de/en/182278](http://uni-tuebingen.de/en/182278)

## KEY QUALIFICATIONS



During your studies, you will acquire not only subject and methodological expertise, but also interdisciplinary skills known as key qualifications, which usually **provide 21 Credit Points (CP) under the examination regulations**. You can find the precise rules for your degree program in your examination regulations; information on this can also be obtained from your course adviser or the faculty student association. For all first year students in Bachelor's degree programs this means that from your first semester you should take courses in interdisciplinary skills alongside the specialist studies in your degree program. The key qualifications make up 3-6 CP of the 30 CP that you acquire on average each semester. The Transdisciplinary Course Program offers a broad range of orientation and key

qualifications, in particular in the fields of Liberal Education and Transferable Skills. You can gain CP here, likewise as through internships. You can find all of our offers at [uni-tuebingen.de/en/182314](http://uni-tuebingen.de/en/182314)

Further offers can be found at the faculties or at other institutions [uni-tuebingen.de/en/30042](http://uni-tuebingen.de/en/30042)

## WHAT IS THE COURSE PROGRAM?



The Transdisciplinary Course Program is divided into three areas: In the first area, Liberal Education, we offer students from all subjects the opportunity to deal intensively with questions and problems on current topics such as digitalization, inter- & transculturality, economic thinking and acting, politics, society & ethics as well as sustainable development from different academic perspectives. Our courses in the second area, Transferable Skills, are aimed at acquiring study- and job-relevant skills and abilities as well as knowledge in the areas of communication and applied economics. In addition, under 'Artistic Offerings', you will find courses and artistic offerings of the university where you can expand your creative potential. Master's students, doctoral candidates and postgraduates are offered a selection of courses in the **'Transdisciplinary Course Program Master'**, with which they can prepare themselves specifically for taking on responsibility in business, administration or in the non-profit sector. The third area of the course program supports you in your career orientation and in shaping the transition between studies and career. [uni-tuebingen.de/en/113615](http://uni-tuebingen.de/en/113615)





### WHAT IS GLOBAL AWARENESS EDUCATION?



The new interdisciplinary program in Global Awareness Education enables you to acquire a high degree of intercultural competence as well as solution competence for the enormous ecological and social challenges of our time. The focus is on imparting in-depth knowledge of globalization and cross-border processes in order to better understand global interdependencies and interrelationships in everyday life. Courses for students are mainly offered in the Transdisciplinary Course Program. You can find further information here: [uni-tuebingen.de/en/215290](https://uni-tuebingen.de/en/215290)

### WHERE CAN I FIND INTERNSHIPS AND JOBS?



Companies, associations, startups, foundations, etc. advertise internships, student trainee positions, and career-entry positions specifically for Tübingen students on the University of Tübingen's Praxisportal. Here you can also find positions for student or research assistants at a variety of the university's institutes and facilities. Further information on the Praxisportal at: [uni-tuebingen.de/en/70754](https://uni-tuebingen.de/en/70754)

### HOW CAN I INTEGRATE SOCIAL ENGAGEMENT INTO MY STUDIES?



Whether in clubs, social institutions or student initiatives, your charitable work during your studies is important and can be recognised as interdisciplinary competence with CP. The TRACS area „Social Engagement and Service Learning“ supports you in actively taking on social responsibility and critically reflecting on your role in society: [uni-tuebingen.de/en/11815](https://uni-tuebingen.de/en/11815)

### HOW CAN A CERTIFICATE ENHANCE MY ACADEMIC PROFILE?



Within the scope of the interdisciplinary study program, you have the opportunity to further sharpen your study profile. In addition to your specialized studies, you can take specific courses and seminars and, for example, acquire the certificates "Global Awareness", "Applied Business Administration" (for MA), "Studium Oecologicum" or "Social Commitment". You can find more information about the certificates and your contact persons at: [uni-tuebingen.de/en/33385](https://uni-tuebingen.de/en/33385)

### HOW CAN ADVICE AND COACHING ON STARTING A CAREER HELP?



The advice and coaching offered by the Career Service can help you to answer questions that might arise while you are studying: What can I do with my degree? Are my application documents okay? How can I present myself professionally and convincingly? We welcome your questions whether during our office hours, at individual or group meetings, or in online seminars, and will be happy to help you with our services, which you can access for free for up to six months after you finish your studies. We recommend that you start to consider your career prospects as soon as you start studying! [uni-tuebingen.de/en/2796](https://uni-tuebingen.de/en/2796)

You can find details of our services and contacts as well as our current opening hours on our website: [uni-tuebingen.de/en/182278](https://uni-tuebingen.de/en/182278)



## Studium Generale

A select program at the university that is open to everyone ...

Studium Generale is a free course offered by the university, where university academics voluntarily put on a program of evening events during the semester in addition to their regular work. It is designed for students from all faculties and other interested members of the public. Tübingen academics and prominent speakers from outside the university give talks on current and usually multidisciplinary themes in several lecture series.

### Studium Generale at the University of Tübingen

- ▶ seeks to build a science-based debate on contemporary issues
- ▶ tackles fundamental questions concerning human existence
- ▶ discusses topics that go beyond individual disciplines

Studium Generale is coordinated by a work group led by the Vice President for Teaching and Learning on behalf of the University of Tübingen Senate.

As part of the key qualifications, you can acquire CP for attending a lecture series. Above all you can gain valuable impetus, also in your own subject. Dare to broaden your horizons! You can find out about the current program on our website: [uni-tuebingen.de/en/63](https://uni-tuebingen.de/en/63)



## Studium Oecologicum

Wilhelmstraße 56, 72074 Tübingen

Project management: Prof. Dr. Thomas Potthast and Dr. Luzia Sievi

### LEARNING SUSTAINABILITY – SHAPING THE FUTURE



The Studium Oecologicum is a program on sustainable development for students of all disciplines. From the basics of sustainable development to in-depth topics such as environmental racism, sustainable energy supply and nutrition to socio-ecological urban development and post-colonial perspectives – in the Studium Oecologicum you can attend interactive seminars that address sustainable development in its various facets. Here you can learn to analyze current challenges and develop approaches to solutions for a just and ecologically sustainable future.

With twelve credit points (or more), you can earn the Studium Oecologicum certificate, which certifies basic competencies in the field of sustainable development.

The Studium Oecologicum is supported by the Competence Center for Sustainable Development (KNE) and the Transdisciplinary Course Program and Career Service (TRACS) section. Back in 2009, the student initiative Greening the University e. V. initiated the interdisciplinary and transdisciplinary course program. In the Transdisciplinary Course Program (TCP), the courses of the Studium Oecologicum are flagged under the focus on sustainable development with the code numbers SOG or SOT.

You can find more information about Studium Oecologicum and our current course program on our website: [uni-tuebingen.de/en/206802](https://uni-tuebingen.de/en/206802)

[info.studium-oecologicum@uni-tuebingen.de](mailto:info.studium-oecologicum@uni-tuebingen.de)





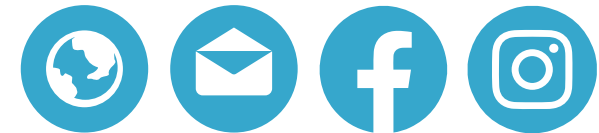
# University Sports Center

Institute of Sports Science  
Wilhelmstraße 124, 72074 Tübingen  
[uni-tuebingen.de/en/174006](http://uni-tuebingen.de/en/174006)  
[hsp-info@ifs.uni-tuebingen.de](mailto:hsp-info@ifs.uni-tuebingen.de)

The University Sports Center (HSP) is one of the largest sports facilities providers in the region, with guided weekly (digital) courses covering over 40 types of sport and 300 qualified trainers. And that's not all – the HSP is both practical and scientific in setting a direction, and plays an important role in the social life at universities, in the promotion of health, in the integration of newly-matriculated and international students or international staff, in interdisciplinary skills training and as an area for students to teach and learn. As a modern university sports center, the Tübingen HSP sums up its role as “Health – Sports – Passion”. Besides its core competence in sports, it also promotes physical and mental health and the passion and commitment that see groundbreaking social issues as an important field of work.

## The modern University Sports Center offers

- ▶ a social home for university members, which can be particularly beneficial when starting studies or work (Identification)
- ▶ a platform for integration of the many international students and staff (Integration)
- ▶ an important space for the acquisition of interdisciplinary skills in the complex system of a university (Teaching and Learning, voluntary work)
- ▶ healthier studies through the student health management project (SGM BeTaBalance)



## CORE TASK: SPORTS PROGRAM



The core task of the HSP is to contribute to an improved quality of life by providing a comprehensive, diverse and needs-oriented sports program. Besides guided courses, workshops and excursions that can be attended in person or online, you can also organize your exercise at the University Sports Center yourself. The facilities of the Institute of Sports Science include a sports hall and an indoor pool, the Finnbahn jogging track and stadium with oval track, various grass courts, sand courts and tennis courts, and a gym which also has a climbing tower. University Sports Center courses are usually publicized online two weeks before the start of the semester. Courses are open to students and university staff and are subject to a fee and registration. You can register for semester courses online one week before the start of semester:

[uni-tuebingen.de/en/173937](http://uni-tuebingen.de/en/173937)

## ENRICHING THE EDUCATIONAL LANDSCAPE

The University Sports Center is not just there to benefit your sporting abilities but also your educational performance, as it is the ideal counterbalance to desk work. We see movement as an element to benefit personal well-being, maintain health and general performance, as well as encouraging self-development. The HSP also offers practical courses and training activities designed to pass on a broad range of knowledge and social skills and make a significant contribution to the qualification of students and volunteers. The HSP also makes a scientific contribution with its involvement in research projects and cooperative activities.





### SUPPORT FOR VOLUNTARY WORK

Our support for voluntary work is another aspect of activities at the University Sports Center. By encouraging the engagement of students, volunteers and full-time staff the HSP boosts creativity, innovation and, at the same time, continuity with a participative peer-to-peer approach.

### SUPPORT FOR COMPETITIVE SPORTS

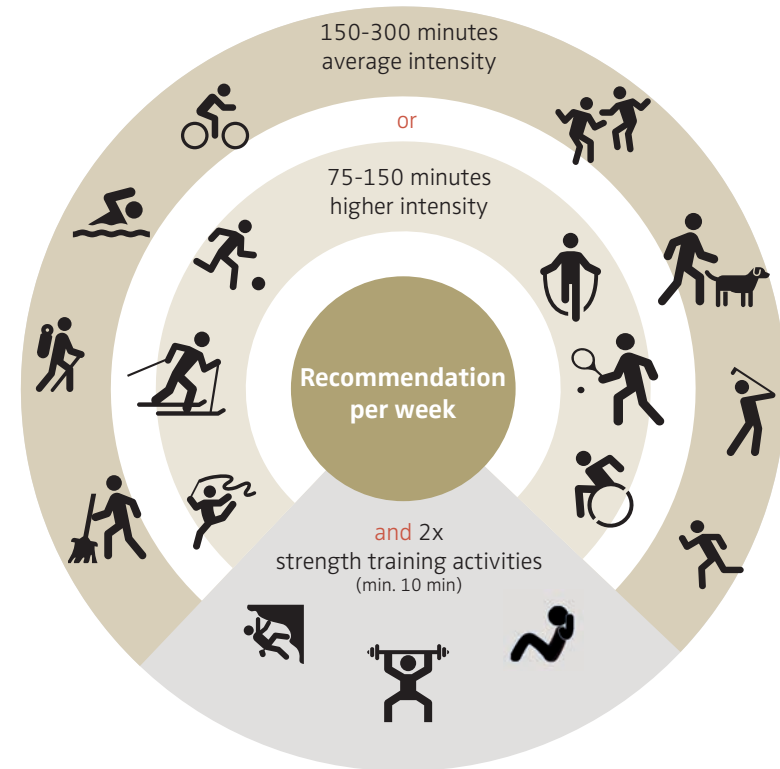


The HSP also encourages competitive sports. As well as helping top athletes to combine sport with studies, we also organize various German university championships and other sporting events, and send athletes to national and international competitions:  
[uni-tuebingen.de/en/173943](http://uni-tuebingen.de/en/173943)

### SUPPORT FOR STUDENT HEALTH



Under the motto „Healthy studying between mountain and valley,“ SGM BeTaBalance is dedicated to the bio-psycho-social health of students. SGM offers a wide range of activities, including hands-on activities, workshops, events, seminars, and much more. Student participation is a top priority: students have the opportunity to help shape health services at the University of Tübingen through various networks.  
[uni-tuebingen.de/en/183172](http://uni-tuebingen.de/en/183172)



## Music and Concerts



### Collegium Musicum

Management: University Director of Music Philipp Amelung  
Schulberg 2 (Pfleghof), 72070 Tübingen

As part of Studium Generale, the Collegium Musicum, the music society of the University of Tübingen, offers an extensive program of musical training to students from all faculties. In parallel with the musical work of the ensembles, we also put on courses, lectures and special events that enhance and complement practical work with theoretical knowledge. The Collegium Musicum consists of three ensembles:

### ACADEMIC CHOIR



For the most part, the Academic Choir performs oratorio programs, on occasion working with the Academic Orchestra or with professional ensembles. There is an audition for admission to the choir (simple and challenging voice exercises, sight singing a simple phrase). You can find current information here:

[uni-tuebingen.de/en/4015](http://uni-tuebingen.de/en/4015)

### CAMERATA VOCALIS



The Camerata Vocalis chamber choir is mainly dedicated to a cappella material. As musical ambassadors of the university, concert tours have already taken the choir to Greece, Brazil, Morocco, Israel and Ireland. To join, you will need a good voice, the ability to sight read and a willingness to study the repertoire independently. You can find more information and our current rehearsals schedule here: [uni-tuebingen.de/en/4007](http://uni-tuebingen.de/en/4007)



### ACADEMIC ORCHESTRA



With roughly 90 musicians, the Academic Orchestra tackles a musically challenging and ambitious program. The repertoire is generally purely symphonic with a focus on the Romantic era; however, we also work together with the Academic Choir to present oratorios. The audition for admission includes two pieces of your choice (slow and fast, approx. 10 min. in total), in addition to which a piece from the current program must be prepared.

[uni-tuebingen.de/en/4023](http://uni-tuebingen.de/en/4023)

Are you interested? Find information on singing/performance auditions here:

[uni-tuebingen.de/en/4023](http://uni-tuebingen.de/en/4023)

+49 7071 29-76096

[collegium.musicum@uni-tuebingen.de](mailto:collegium.musicum@uni-tuebingen.de)

[uni-tuebingen.de/en/3360](http://uni-tuebingen.de/en/3360)



**SCHOLA CANTORUM**

The Schola Cantorum at the University of Tübingen Institute of Musicology, headed by Professor Stefan Johannes Morent, is devoted to Gregorian Chant, that is, the plainchant Latin liturgical song of the Roman Church, and other forms of sacred music of the Middle Ages. During semester, the Schola rehearses weekly and regularly puts on masses and small concerts.

**Interested male singers with singing experience please register with:**

Prof. Dr. Stefan Johannes Morent  
+49 7071 551889  
stefan.morent@uni-tuebingen.de

**CULTURE OFFICE CONCERTS**

For more than 60 years, together with the Museumsgesellschaft Tübingen e.V. and the City of Tübingen, the University of Tübingen's Culture Office has organized classical concerts in the university's concert hall, the former Bebenhausen Monastery and the Silcher Hall of the Museumsgesellschaft. Each year, three well-established concert programs are put on, offering roughly 25 classical concerts featuring highly-regarded international orchestras and soloists. The winter season program which runs from October to April and the International Piano Festival in May take place in the university's concert hall in the Neue Aula. Our summer concerts in June and July however are a permanent fixture in the calendar at Bebenhausen Monastery, while the Master Concerts take place at Silcher Hall. Students receive a special offer of a 50% discount on concert tickets bought in advance. Before the concert starts, students can also buy any remaining tickets for just € 10 (last-minute tickets).

**Culture Office of the University of Tübingen**

Artistic management: Dr. h.c. Gudni A. Emilsson  
Office: Peer-Arne Arweiler  
Nauklerstraße 2, 72074 Tübingen  
Ticket sales, reservations and vouchers  
+49 7071 29-74659  
+49 7071 26634  
[kulturreferat@uni-tuebingen.de](mailto:kulturreferat@uni-tuebingen.de)  
[konzerte-tuebingen.de](http://konzerte-tuebingen.de)

**ADVANCE TICKET SALES****Bürger- und Verkehrsverein Tübingen**

An der Neckarbrücke, 72072 Tübingen  
+49 7071 91360

**Kiosk Neue Aula**

Geschwister-Scholl-Platz /  
Wilhelmstraße 7, 72074 Tübingen  
+49 7071 29-74658

as well as at all other Reservix advance booking offices  
and online via [konzerte-tuebingen.de](http://konzerte-tuebingen.de)





## The University Museum



Students of all subjects are welcome to discover the university's diverse museums and collections free of charge. These include, above all, the MUT Ancient Cultures at Hohentübingen Castle, the most visited museum in the city and the only one with two UNESCO World Heritage entries and a Guinness record. Not to be forgotten are also the Graphic Collection, the Paleontological Collection, the Musical Instrument Collection, the Mathematical Model Collection, the Zoological or the Mineral Collection – to name just a few.

The Eberhard Karls University of Tübingen has an outstanding collection of objects in its research, teaching and display collections. The magnificent treasures in around 75 scientific collections are not only distinguished by their age and universal diversity; the university collections, some of which are the largest in Europe, also contain one-of-a-kind items that are unique in the world.

This rich heritage not only creates obligations for the university, but also great opportunities – in particular for our students. One of the obligations is to organize the care of the collections in a responsible manner. They should be accessible for research, preserved for future generations and first and foremost be available for university teaching. Moreover, one important goal is to make the collections more accessible to the public. The university has therefore founded the Museum of the University of Tübingen MUT in 2006 as an umbrella institution for all collections. Since 2010, student projects of the MUT have assisted in the inventory and presentation of neglected holdings, and, in some degree programs, a Master profile "Museum and Collections" has been in place since 2016.

Visit the collections or one of the guided tours, take advantage of the digital offerings and the diverse events of the MUT! [unimuseum.uni-tuebingen.de/en](https://unimuseum.uni-tuebingen.de/en)





# Literature and Art

The University of Tübingen also has a lot to offer in the fields of art and literature, including a varied program at the Zeicheninstitut (Art School), the Invited Artist and the Studio Literature and Theater (SLT) program, as well as the Poetics Lectureship. Then there is creative writing, discussions about literature, reading and conversing with major authors ...

## STUDIO LITERATURE AND THEATER



The Studio Literatur und Theater is the only university literature institution in the German-speaking world that is open to students of all disciplines without an aptitude test. It is dedicated to all aspects of creative writing, reading and thinking: from discussing first attempts at writing together to performing your own texts on stage.

Students from all departments with a keen interest in language and literature can take courses in various forms of literary and creative writing. The courses are aimed at both beginners and advanced students.

Outstanding guest lecturers complement the studio's permanent seminars. Working with writers and people from publishing, journalism, drama or editing offers a wide range of opportunities to broaden your horizons and exciting insights into the literary world of today.

All seminars can be recognized as key qualifications or as interdisciplinary qualifications. Students of Rhetoric or German Studies can have the successfully completed seminars accredited as practical seminars. Furthermore, there is the possibility to complete the artistic education at the SLT with an independent literary project (certificate).

[uni-tuebingen.de/en/26475](https://uni-tuebingen.de/en/26475)

## TÜBINGEN POETICS LECTURESHIP



The Tübingen Poetics Lectureship provides students, lecturers, university members, and the wider public from Tübingen and the region an opportunity to meet and engage with prominent German and international authors. It thus initiates and enhances inner-university dialog across disciplinary boundaries and invites cultural exchange between the university and the city, and between the university and the wider region. Lecturers give - usually in November - annual lectures and workshops at the university (seminars or writing workshops). The lectureship has been organized by the German department at the University of Tübingen since 1996. The Tübingen Poetics Lectureship is supported by the Würth Foundation, with the Würth Literature Prize being awarded by the visiting lecturer at the end of their term. [uni-tuebingen.de/en/10669](https://uni-tuebingen.de/en/10669)

## ZEICHENINSTITUT (ART SCHOOL) AND INVITED ARTIST

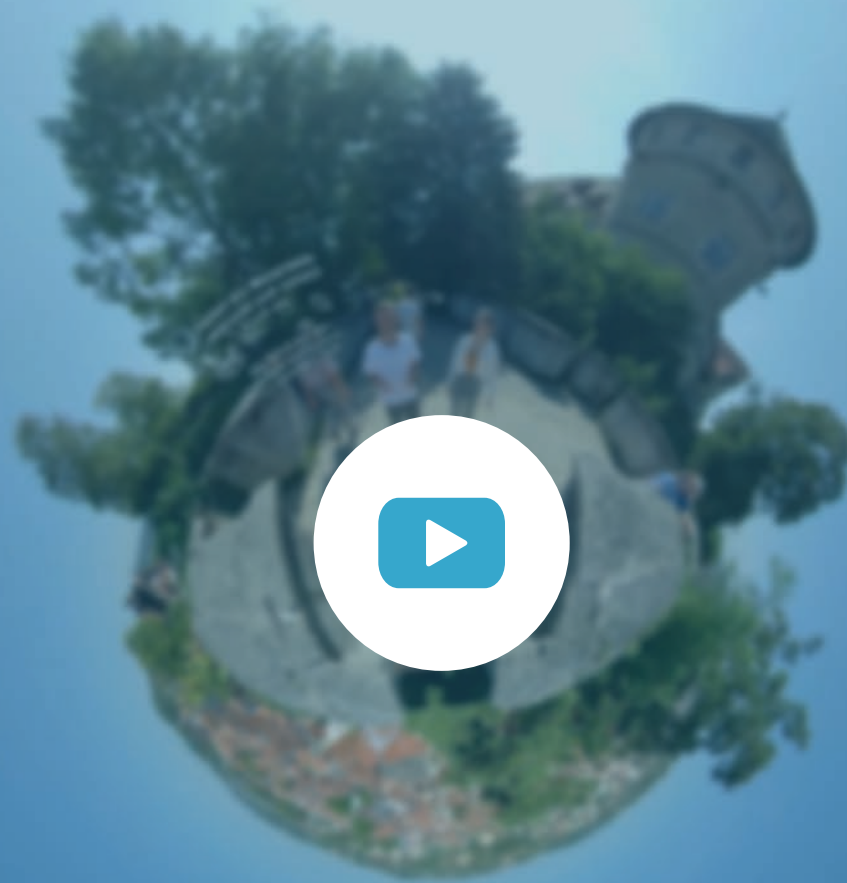


The university's art school is open to students from all faculties and promotes creative skills, close observation and the development of new perspectives. The offer, for which students can register via the Transdisciplinary Course Program, includes painting, printmaking and photography as well as portrait and nude drawing. The 'Invited Artist' concept aims to introduce students to art and its traditions, focusing on the particularities and development in different cultures. This concept, which promotes creativity, artistic understanding and cultural diversity, is also aimed at students from all faculties.

[uni-tuebingen.de/en/1754](https://uni-tuebingen.de/en/1754)

[unimuseum.uni-tuebingen.de/de/forschung-lehre/invited-artist](https://unimuseum.uni-tuebingen.de/de/forschung-lehre/invited-artist)







# Center for Media Competence: Our Editorial Teams

Wilhelmstr. 50, 72074 Tübingen  
+49 7071 29-76710  
[uni-tuebingen.de/en/14835](https://uni-tuebingen.de/en/14835)  
[info@zfm.uni-tuebingen.de](mailto:info@zfm.uni-tuebingen.de)  
[instagram.com/zfmunitue](https://www.instagram.com/zfmunitue)

The four established editorial teams at the university's Media Competence Center (ZFM), CampusTV, the campus channel Radio Micro-Europa, the Climate Desk and the Media Bubble blog, offer the opportunity to carry out journalistic work. This offer is intended for students from all faculties. Students in Bachelor's degree programs can acquire CP for career-related key competencies.

## TÜBINGEN CAMPUS RADIO MICRO-EUROPA



The Tübingen Campus Radio Micro-Europa produces a weekly program that can be received on the Free Radio Wüste Welle via FM and as a live stream on the Internet. Our formats: Magazine, studio talk, radio play, feature and live musical recordings. In the editorial work, you will deepen your knowledge in the areas of journalistic work, research, recording technology, editing and final production. [micro-europa.de](https://micro-europa.de)

## BLOG MEDIA BUBBLE



The student blog Media Bubble deals with topics from the fields of media criticism, media studies and media practice. Media Bubble presents itself in a multimedia format, i.e.

alongside the texts there are always images, videos, graphics or animations. Another focus is Media Bubble's Instagram channel. The editorial team is led by student tutors. [media-bubble.de](https://www.instagram.com/media-bubble.de)



## CAMPUS TV



At CampusTV, you will learn how to create moving image contributions and produce television programs under professional guidance. In addition to YouTube, you will also use social media platforms. Depending on the strategic communication purpose, you will produce surveys, interviews, reels, animations or explanatory films. CampusTV serves as an experimental field for new forms of communication in the field of journalism. CampusTV offers a basic course at the beginning of the semester and after that regular editorial work. [youtube.com/@CampusTVTubingen](https://youtube.com/@CampusTVTubingen)

## CLIMATE DESK



The climate desk is also led by student tutors and produces content for a wide range of audiovisual genres: podcasts, videos and social media. The climate desk bundles, networks and communicates concrete climate protection activities, teaching offers and research results in journalistic formats and as a multiplier within and outside the university. Email: [kurt.schneider@uni-tuebingen.de](mailto:kurt.schneider@uni-tuebingen.de)



# Student Self-Government

Student Union, Clubhaus  
Wilhelmstraße 30, 72074 Tübingen

## THE VERFASSTE STUDIERENDENSCHAFT (VS) – STUDENT UNION

All students matriculated at the University of Tübingen are part of the Verfasste Studierendenschaft (VS) – this includes you! The VS is a legal entity and is self-managing.

### Its duties include

- ▶ Representation of the interests of students in higher education policy, disciplinary and interdisciplinary, social, economic and cultural matters
- ▶ Promoting political education and the exchange of ideas by students on political subjects
- ▶ Reducing inequalities within the student body

Further Information:

[buero@stura-tuebingen.de](mailto:buero@stura-tuebingen.de)  
[vs-tuebingen.de](https://vs-tuebingen.de)  
[@vs\\_tuebingen](https://www.instagram.com/vs_tuebingen)

The central body of the VS is the Studierendenrat (Student Council, StuRa). Students also represent themselves in the individual departments with the aid of the faculty student associations. The VS finances their work from the semester fees.



## THE STUDIERENDENRAT (STURA) – STUDENT COUNCIL

The StuRa is elected annually by all students and could be called the parliament of the student union. The 21 members of the StuRa usually come from a variety of university political groups and the faculty student associations.

The student council represents the interests of the student body to the university and the public. It finances events, e.g. the human rights week or the RACT! Festival, organizes cooperative activities, e.g. car sharing with teilAuto, and has an emergency fund to help students continue their studies in times of crisis.

The StuRa holds regular public meetings in the Clubhaus on Wilhelmstraße, which can also be attended online. More information about the StuRa:

[buero@stura-tuebingen.de](mailto:buero@stura-tuebingen.de)  
[vs-tuebingen.de](https://vs-tuebingen.de)

## FUNDING

All students and groups can apply to StuRa for funding for projects that are designed to benefit students. For instance, lectures and discussions, film presentations, campaign days and film festivals, self-organized seminars (without CP) and student media, such as the student paper "Kupferblau" are all funded.







## WORK GROUPS

The practical work of StuRa takes place in work groups that are open to all students. There are work groups on subjects such as:

- ▶ Press and publicity work
- ▶ Finances
- ▶ Political education
- ▶ RACT!-Festival
- ▶ Equal opportunities
- ▶ Academic affairs
- ▶ Cafeteria
- ▶ ...

You are warmly invited to join in and contribute ideas!

## GENERAL MEETINGS AND DECISIONS

There is a general meeting of students every semester, which is organized by StuRa. All students can and should take part in them, and help to shape things actively at university level. They are a crucial fundamental democratic institution of the VS. The meeting can involve activities such as passing meaningful VS decisions, issuing opinions and calling on the university to act.

## FACULTY STUDENT ASSOCIATIONS



Students form faculty student associations within departments. They are the mouthpiece of the degree programs, and engage on behalf of the students in their respective discipline, representing them on the bodies in their faculty. This can include helping to plan examination regulations and advising fellow students. Faculty student associations organize cultural events, lectures, parties (at the Clubhaus) and first semester events, such as "Erstiwochen" and "Erstihütten". The associations are open to all students in a particular subject and are always delighted to see new faces. If you have any questions or interests please simply attend a meeting of your faculty student association.

All faculty student associations gather for the Fachschaftenvollversammlung (FSVV), which takes place every Monday in public at 6.15 p.m. at the Clubhaus or via Zoom, to deal with issues affecting studies throughout the university and higher education policy matters. You are very welcome to join in there too!

More on the FSVV: [fsrvv.de/](https://fsrvv.de/)





# LIFE IN TÜBINGEN

## "Our City is a University."

It may have a picture-perfect river front and idyllic narrow streets, but the university city at the heart of Baden-Württemberg has far more to offer than a backdrop.

Students have shaped the city of Tübingen for centuries, and by 1964 one in four of the city's residents was a student at the university. Much is still as it was just 60 years ago: the weekly market in front of the Rathaus, chatty winegrowers, students in need of housing, fine bookstores and the trombone band at the abbey church. Punting around the Neckar island is still one of the highlights – not just for tourists. The Neckarmauer, the old Botanical Garden (Bota) and the Holzmarkt are all central meeting places.

But some things have changed in Tübingen as well. The city is more modern, and, hand in hand with it, the university. In 2016 the Cyber Valley research cooperation into Artificial Intelligence (AI) was launched. The project involves partners from politics, science and industry, alongside the University of Tübingen. Tübingen University Hospital is one of the most highly-renowned and innovative hospitals in Germany, and with over 10,000 staff is the largest employer in the region.

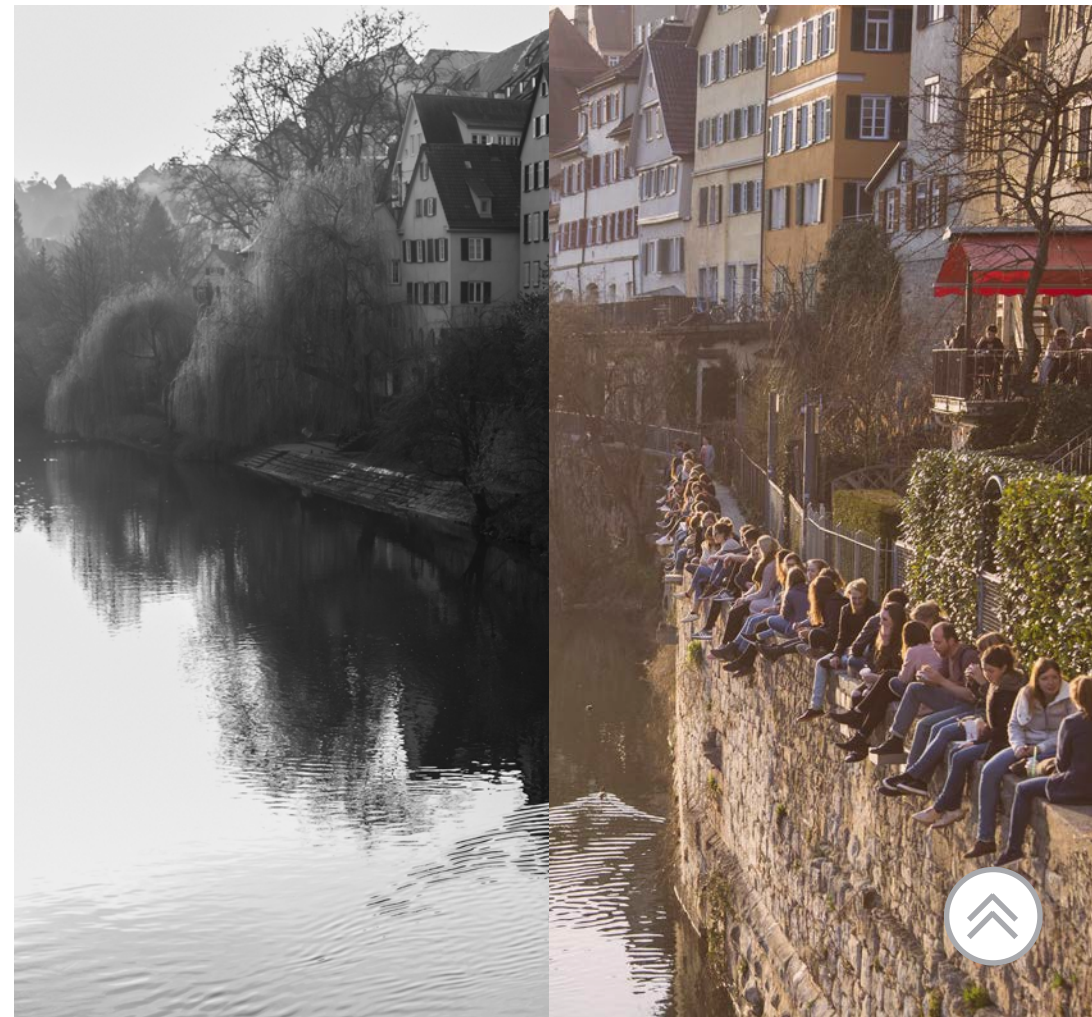
For a medium-sized city with around 91,000 inhabitants, Tübingen has an exciting variety of cultural offerings: two museums, two theaters, three cinemas and many more opportunities for outings and experiences. And on top of their studies, many students get involved in social issues or in the cultural and educational opportunities in the city.

If you would like to know more about the history of Tübingen and of students in Tübingen, we recommend the documentary **"Tübingen – Jeder Vierte ein Student 1964"** in ARD's media library.

The following pages offer tips and important addresses that can help with finding accommodation, financing your studies and mobility in Tübingen.



Retro '64



## Funding

Semester fees, books, excursions, rent, pub crawl – life as a student costs money. But several places can help you with advice and funding.

### BAFÖG



Depending on your personal situation, you may be able to apply for a student grant under the Federal Training Assistance Act (Bundesausbildungsförderungsgesetz, BAföG). The staff at the Office for Educational Support (Studierendenwerk Tübingen-Hohenheim Amt für Ausbildungsförderung) can help you with any questions about applying for a grant. The Studierendenwerk Tübingen-Hohenheim is also responsible for grants for educational stays in countries such as Turkey and large parts of Asia.

#### Amt für Ausbildungsförderung

Listplatz 1, 72764 Reutlingen  
+49 7121 68088-0

[bafoeg@sw-tuebingen-hohenheim.de](mailto:bafoeg@sw-tuebingen-hohenheim.de)  
[my-stuwe.de/en/bafoeg](https://my-stuwe.de/en/bafoeg)



#### Telephone consultation hours of the InfoPoint Reutlingen:

Monday – Thursday	09.00 a.m. – 12.00 p.m.
Tuesday	03.00 p.m. – 03.30 p.m.

#### BAföG-InfoPoint

In the former Oberschulamt, Keplerstraße 2, 72074 Tübingen  
[my-stuwe.de/en/bafoeg/bafog-contact-persons](https://my-stuwe.de/en/bafoeg/bafog-contact-persons)

#### Office hours:

Monday + Wednesday	10:00 – 11:30 a.m. and 01.00 – 03.00 p.m.
Tuesday + Thursday	10:00 – 11:30 a.m.



### Grants for educational stays abroad (Turkey and parts of Asia)

Bismarckstraße 24, 72764 Reutlingen  
+49 7121 94770

[auslandsbafoeg@sw-tuebingen-hohenheim.de](mailto:auslandsbafoeg@sw-tuebingen-hohenheim.de)  
[my-stuwe.de/en/bafoeg/support-for-studying-abroad](https://my-stuwe.de/en/bafoeg/support-for-studying-abroad)

### LOANS



To fund your studies or bridge shortfalls (e.g. during examination periods) you can make use of loans and credit. The student services educational support section will be happy to help you.

#### Studierendenwerk Tübingen-Hohenheim

Educational Support section  
Listplatz 1, 72764 Reutlingen  
+49 7121 68088-14

[darlehen@sw-tuebingen-hohenheim.de](mailto:darlehen@sw-tuebingen-hohenheim.de)  
[my-stuwe.de/en/bafoeg/funding-loans](https://my-stuwe.de/en/bafoeg/funding-loans)



#### Telephone consultation hours:

Tuesday	09.00 a.m. – 11.00 a.m.
Wednesday	01.30 p.m. – 03.30 p.m.





## Deutschlandstipendium

Funding for especially gifted and able students

The Deutschlandstipendium is a national scholarship program jointly backed by the Federal Government and private donors. This scholarship program funds students who are exceptionally gifted and performance-driven with 300 Euros a month. The number of scholarships awarded each year depends on the amount of funding received by the university. In the 2025 Summer Semester, the University of Tübingen was able to award 200 scholarships. The scholarships are announced once a year in November and are awarded for one year starting in April.

The maximum duration of funding is determined by the set duration of study and can only be extended in special justified cases. Application to extend the duration of funding must be made in writing, setting out reasons. You can only apply in relation to the degree program in which you are matriculated or to which you have applied.

The scholarship is paid monthly as a non-repayable allowance. Applications for extension are possible as a new application for the subsequent period. The scholarships are awarded regardless of income and can be combined with BAföG funding.

Information on application requirements and deadlines as well as on the awarding modalities at the University of Tübingen: [uni-tuebingen.de/en/21268](https://uni-tuebingen.de/en/21268)

You can also obtain information about the Deutschlandstipendium on the website of the Federal Ministry of Research, Technology and Space: [deutschlandstipendium.de](https://deutschlandstipendium.de)

Other scholarship schemes: [uni-tuebingen.de/en/112600](https://uni-tuebingen.de/en/112600)

### **JOBS**



If you want to earn something on the side and are looking for a part-time job, please take note that you are only permitted to work up to twenty hours a week as well as studying. The Employment Agency can help you to find a job:

#### **Tübingen Employment Agency**

Konrad-Adenauer-Straße 12, 72072 Tübingen  
+49 800 4 5555 00 (free call)

[tuebingen.jobvermittlung@arbeitsagentur.de](mailto:tuebingen.jobvermittlung@arbeitsagentur.de)

#### **Advertisements for student assistants (HiWis)**

[uni-tuebingen.de/en/108817](https://uni-tuebingen.de/en/108817)

#### **Praxisportal - the Jobs and Internships marketplace of the University of Tübingen**

<https://www.praxisportal.uni-tuebingen.de/>

#### **Gastronomy and culture in Tübingen**

Mini-jobs for students are regularly offered here. Don't hesitate to ask on the off-chance as well.



## Housing

Halls of residence, shared flat or a place of your own? Check out the housing market well before the start of term.



### STUDIERENDENWERK TÜBINGEN-HOHNHEIM A.D.Ö.R.

The Studierendenwerk Tübingen-Hohenheim offers around 3,700 rooms in student residences in Tübingen, including the Studentendorf Waldhäuser Ost with around 1,700 rooms. You can find more details about the individual student halls of residence and an online application form on the student services website.

#### Student residence administration

Fichtenweg 5, 72076 Tübingen  
+49 7071 96970

[wohnheimverwaltung@sw-tuebingen-hohenheim.de](mailto:wohnheimverwaltung@sw-tuebingen-hohenheim.de)  
[my-stuwe.de/en/housing/halls-of-residence-tuebingen](https://my-stuwe.de/en/housing/halls-of-residence-tuebingen)



#### Office hours:

Monday and Wednesday	09.00 a.m. – 11.30 a.m.
Thursday	01.30 p.m. – 03.30 p.m.

#### Private accommodation

In Tübingen, the Studierendenwerk Tübingen-Hohenheim offers an online platform for students who are looking for a room in a private home.

+49 7071 9697-45 (Tuesday and Thursday 09.00 a.m. – 11.30 a.m.)

[privatzimmervermittlung@sw-tuebingen-hohenheim.de](mailto:privatzimmervermittlung@sw-tuebingen-hohenheim.de)  
[my-stuwe.de/en/housing/private-room-accommodation-service-2](https://my-stuwe.de/en/housing/private-room-accommodation-service-2)



### TÜBINGER STUDENTENWERK E. V.

Four of the Tübingen halls of residence belong to the Studentenwerk e. V. Only some of the rooms are awarded on application; in two houses the occupants manage arrangements for themselves and you have to apply to them directly for any vacant rooms. You can find up-to-date information on the website of the student services.

Rümelinstraße 8, 72070 Tübingen  
+49 7071 92490

[kontakt@stuwe-tuebingen.de](mailto:kontakt@stuwe-tuebingen.de)  
[stuwe-tuebingen.de](https://stuwe-tuebingen.de)



### FIND A ROOM – LINKS

There are many other places to live, e.g. with associations, ecclesiastical or private landlords. The student housing website can give you an initial idea of what is available and various further links: [uni-tuebingen.de/en/105](https://uni-tuebingen.de/en/105)

You can find ads in the Schwäbisches Tagblatt local paper each Wednesday and Saturday and, of course, place an advertisement yourself: [tagblatt.de/anzeigen](https://tagblatt.de/anzeigen)

One popular way of finding offers of a room or advertising for a room: [wg-gesucht.de/en](https://wg-gesucht.de/en)





# Eating

## Canteens and cafeterias



A three-course menu or just a cup of coffee – catering at the Studierendenwerk provides a wide choice, including vegetarian and vegan options, whether you are ravenous or just peckish. Outside opening hours, you can get snacks from vending machines at the canteens and cafeterias. You can pay without cash everywhere using your student ID card. If you register for autoloan you can top up your pass at the till completely cashfree. Alternatively there are also EC card terminals.

There are canteens all around Tübingen – the Prinz Karl canteen, for instance, is situated in the historic center. It is well worth visiting the historic building – the canteen is one of the oldest in Germany. If you are at the Natural Sciences institutes on the mountain, you can get supplies at the Auf der Morgenstelle canteen and the Lecture Center cafeteria. Since the 2024/2025 winter semester, the Wilhelmstraße cafeteria has been shining in new splendor. Hot meals and a modern coffee bar are also available in the Wilhelmstraße cafeteria. After lunch, you can enjoy your coffee in the Neuphilologicum cafeteria in the Brechtbau building, in the university library, or in the Theologicum.

Canteen menus and precise times of opening and meal serving at individual canteens can be found at: [my-stuwe.de/en/refectory](https://my-stuwe.de/en/refectory)

**Prinz Karl Mensa canteen and cafeteria**  
Hafengasse 6, 72074 Tübingen

**Morgenstelle Mensa canteen and cafeteria**  
Auf der Morgenstelle 26, 72076 Tübingen

**Mensa canteen and cafeteria Wilhelmstraße**  
Wilhelmstraße 13, 72074 Tübingen

**Cafeteria in the University Library (UB)**  
Wilhelmstraße 32, 72074 Tübingen

**Theologicum cafeteria**  
(with vending machine)  
Liebermeisterstraße 12, 72076 Tübingen

**Neuphilologicum cafeteria**  
(with vending machine)  
Wilhelmstraße 50, 72074 Tübingen

As well as these student services facilities, there are many restaurants, snack bars and pubs offering deals for students on campus and in the historic center.



## Getting around

If you can't use your bike, there's the bus, SAM, car sharing – Tübingen is prepared.

### TRANSPORT



You can travel on the naldo (Neckar-Alb-Donau) public transport network for six months with the semester ticket – far cheaper than using comparable monthly passes. The pass is valid on all buses, trains and trams in the district of Tübingen, Reutlingen, Zollernalbkreis and Sigmaringen.

To buy the pass, print out your semester ticket voucher using your access data on the alma portal, and hand it in at the sales office.

You can also travel throughout the entire naldo region free of charge on buses and trains/trams without a semester ticket every day after 7 p.m. and all day Saturday, Sunday and public holidays. You must have your enrollment record and student ID card with the naldo logo printed on it with you to present them to ticket inspectors in order to travel free of charge.

In addition, there is the Deutschlandticket JugendBW for students under 27 years of age. You can use the entire local transport in all of Germany with this pass.

If you commute to the university from the Stuttgart region or frequently travel from Tübingen to Stuttgart then you additionally need a Verkehrsverbund Stuttgart (VVS) extension ticket. You can use it all semester on the VVS network.

The semester ticket can be bought from the naldo online ticket shop, all Tübingen and Reutlingen city transport network sales outlets, Omnibus Groß in Rottenburg, and Deutsche Bahn sales outlets (including online). The ticket can only be bought within the VVS region in DB travel centers and SSB customer centers. Both tickets are only valid in com-

bination with a current student ID card. You'll get Information and current prices: from [naldo.de](http://naldo.de)

### TÜBINGEN CITY BUSES



Tübingen city transport network buses will keep you going: they run to most parts of the city at least every half hour, and there are even up to 20 buses an hour to Waldhäuser Ost. At night, the night buses will get you back home safely. Tübingen city transport network buses can be used with the semester ticket. Information from [svtue.de](http://svtue.de)

### CARSHARING



If you don't have your own car but like to use one now and then, you can register for car sharing. Tübingen's teilAuto initiative can provide you with a fleet, ranging from electric cars via small cars to small busses – and students even get special rates: [teilauto-neckar-alb.de](http://teilauto-neckar-alb.de)

Stadtwerke Tübingen offers an environmentally friendly alternative with the rental of electric cars via Coono E-Carsharing: [coono-sharing.de](http://coono-sharing.de)

### VAN HIRE

If you have to transport something larger: TeilAuto Neckar-Alb also hires out an Opel Movano and several other vans at favorable rates.





### FOR NIGHT-OWLS



Tübingen's night bus runs from midnight to 3 a.m. daily on a special route network that covers almost every part of the city. On the nights between Thursday and Sunday and before holidays, it runs until 4 a.m. On Christmas Eve and New Year's Eve Tübingen's night bus operates on a special timetable. The bus station is the central stop. There is also an intersection at the Nonnenhaus/Wilhelmstraße stops. The night bus runs hourly. Some residential areas are visited by two lines every 30 minutes.

Normal prices apply to Tübingen's night bus. All season tickets (including the naldo semester ticket) remain fully valid. Every day after 7 p.m. and all day Saturday, Sunday and public holidays you can travel for free, provided you can present your enrollment record. You can take bicycles with you on certain stretches of the night bus routes (see "Fahrradmitnahme im TüBus").

You can find information about the Tübingen's night bus route network on the Tübingen city transport website: [tuebus.de/fahrplan-und-liniennetz/nachtbus.html](https://tuebus.de/fahrplan-und-liniennetz/nachtbus.html)

### TÜBINGEN'S NIGHT-SAM



Tübingen's Night-SAM (Nacht-SAM) is a nighttime shared taxi service that takes you from one collection stop to another, or – outside the city center – directly from house to house after prior registration by phone. The Night-SAM operates within the city area of Tübingen, including the districts, daily from 0.00- 6.00 at fixed departure times. The normal fare

does not apply to the Night-SAM. Time tickets are not valid either, but you get a discount on the Night-SAM fare. Further information:

[tuebus.de/fahrgastinformationen/sammel-anruf-mietwagen-sam.html](https://tuebus.de/fahrgastinformationen/sammel-anruf-mietwagen-sam.html)

### DAY-SAM



The on-call shared transport "Day-SAM" (Tag-SAM) is a supplementary service offered by the Tübingen city transport network. The lines run according to the timetable (Tübingen city area including residential districts) and are indicated with "R9". SAM trips are carried out by car or minibus with up to eight seats. The standard network fares apply to Day-SAM, however for technical reasons the reduced rate when paying with cashcards or naldo card do not apply and 4-journey tickets, day tickets and naldo Wabentarif district-rate tickets cannot be issued. On request, the driver can issue a receipt for single tickets, entitling you to change to bus or rail free of charge within the Tübingen city region.

Special terms of conveyance apply to both Day- and Night-SAM; you can find them on the Internet under:

[tuebus.de/fahrgastinformationen/sammel-anruf-mietwagen-sam.html](https://tuebus.de/fahrgastinformationen/sammel-anruf-mietwagen-sam.html)

Please register at least 30 minutes before departure here if you wish to travel by Day- or Night-SAM: **+49 7071 920555**





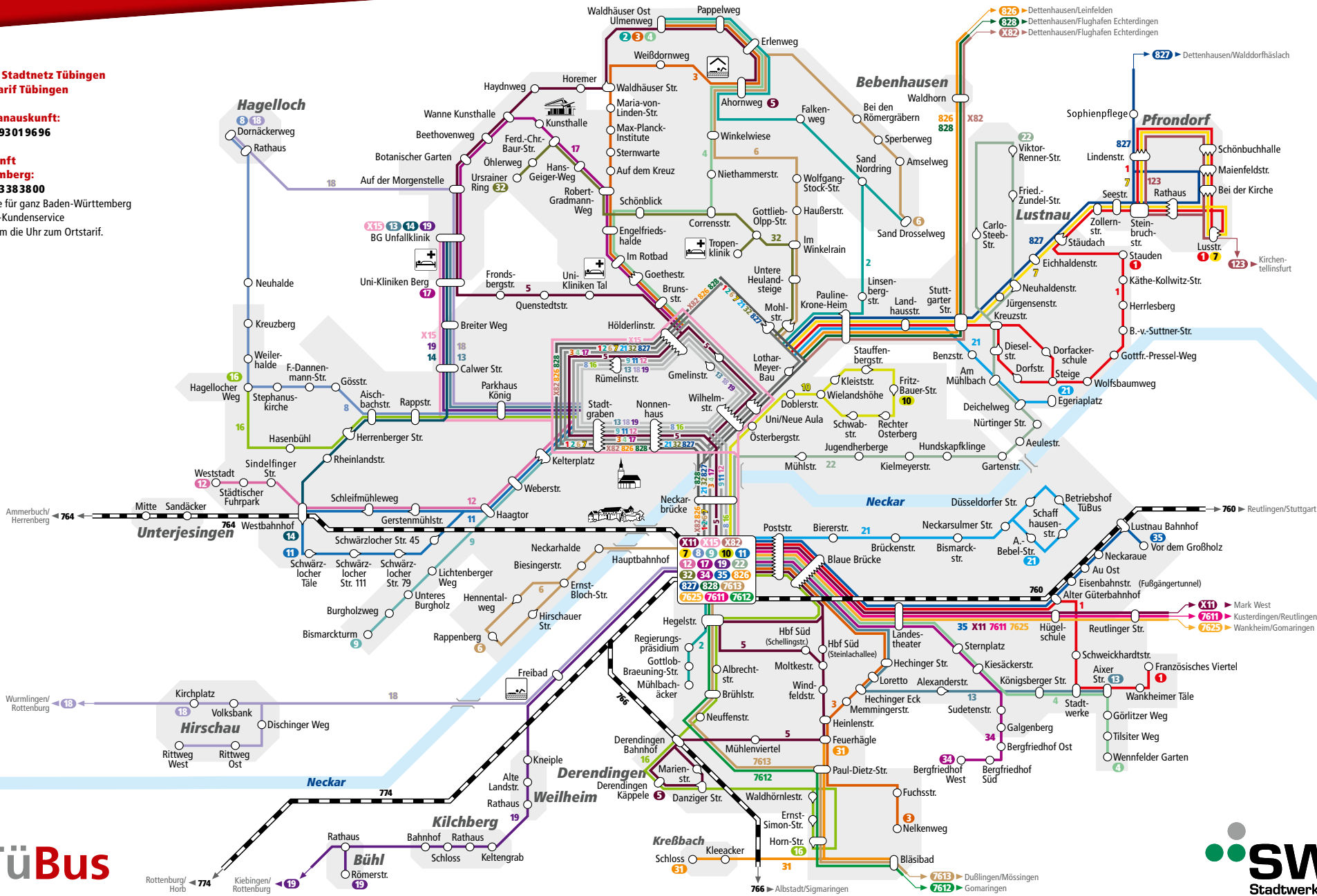
# LINIENNETZPLAN STADTNETZ TÜBINGEN

[www.swtue.de/tuebus](http://www.swtue.de/tuebus)

Für Fahrten im Stadtnetz Tübingen  
gilt der Stadttarif Tübingen

**naldo – Fahrplanauskunft:**  
Telefon 07471 93019696

**Fahrplanauskunft**  
**Baden-Württemberg:**  
Telefon 0711 93383800  
Fahrplanauskünfte für ganz Baden-Württemberg  
erteilt der bwtarif-Kundenservice  
telefonisch rund um die Uhr zum Ortstarif.



WIR WIRKEN MIT.



Stand: 30. März 2025 Herausgeber: Verkehrsverbund Neckar-Ab-Danau GmbH

## Online Maps



You can find all important addresses and maps here:  
[uni-tuebingen.de/en/655](https://uni-tuebingen.de/en/655)

- ▶ Departments
- ▶ Faculties
- ▶ Lecture buildings
- ▶ Morgenstelle campus
- ▶ Hospitals and medical facilities
- ▶ Accessibility
- ▶ Service points
- ▶ Central institutions
- ▶ Libraries and archives
- ▶ Canteens and cafeterias
- ▶ Museums, collections and gardens

NEVER LOSE YOUR WAY!

## Online Glossary



The University of Tübingen A-Z:  
[uni-tuebingen.de/en/343](https://uni-tuebingen.de/en/343)

- ▶ attempto! University of Tübingen Magazine
- ▶ Botanical Gardens
- ▶ Cafeteria and Canteens
- ▶ Diversity Orientation
- ▶ Excellence Strategy
- ▶ Lost Property
- ▶ Gender Equality Plan
- ▶ University Council
- ▶ Institute for Knowledge Media (IWM)
- ▶ Jobs Portal
- ▶ and much, much more ...

GET TO KNOW THE UNIVERSITY BETTER!







## Universitätseinrichtungen

- 1 Institut für Evolution und Ökologie/MNF, Auf der Morgenstelle 3+5
- 2 Dekanat MNF, FB Pharmazie/MNF (B-Bau), Auf der Morgenstelle 8
- 3 Chemisches Zentralinstitut, Praktikumsräume Chemie/MNF (H-Bau), Auf der Morgenstelle 6
- 4 FB Mathematik/MNF, FB Physik/MNF, Zentrum für Quantitative Biologie (QBIC) (C-Bau), Auf der Morgenstelle 10
- 5 Werkstattgebäude der Physik/MNF (PN-Bau), Auf der Morgenstelle 12
- 6 Technisches Zentrallager, Auf der Morgenstelle 14/1
- 7 Hörsaalzentrum Morgenstelle, Hausmeisterdienstleistungszentrum 2, Bereichsbibliothek Naturwissenschaften, Cafeteria, Auf der Morgenstelle 16
- 8 FB Physik/MNF (D-Bau), Auf der Morgenstelle 14
- 9 Verfügungsgebäude Morgenstelle: Interfakultäres Institut für Zellbiologie (IFIZ); Center for Light-Matter Interaction, Sensors & Analytics (LISA+), Auf der Morgenstelle 15
- 10 Chemikalienlager und Sonderabfallentsorgung, Auf der Morgenstelle 22
- 11 FB Chemie/MNF (A-Bau), Auf der Morgenstelle 18
- 12 Isotopenlabor (F-Bau), Auf der Morgenstelle 24
- 13 FB Biologie/MNF (E-Bau), Auf der Morgenstelle 28
- 14 Mensa II und Cafeteria, Auf der Morgenstelle 26
- 15 Institut für Klinische Anatomie und Zellanalytik/Medizinische Fakultät, Elfriede-Aulhorn-Str. 8
- 16 Lehr- und Lerngebäude/DocLab, Elfriede-Aulhorn-Str. 10
- 17 Zentrum für Gender- und Diversitätsforschung, Internationales Zentrum für Ethik in den Wissenschaften (Projekträume), Brunnenstr. 30
- 18 Werner Reichardt Centre for Integrative Neuroscience (CIN), Institut für Medizinische Psychologie und Verhaltensneurobiologie, Otfried-Müller-Str. 25
- 19 Zentrum für Molekularbiologie der Pflanzen (ZMBP)/MNF, Interfakultäres Institut für Biochemie (IFIB) Neubau, Auf der Morgenstelle 32+34
- 20 Geo- und Umweltforschungszentrum (GUZ): FB Geowissenschaften/MNF, Schnarrenbergstr. 94-96
- 21 FB Informatik/MNF, Astronomie u. Hochenergieastrophysik/MNF, Sand 1, 13, 14; Institut für Kriminologie/Juristische Fakultät, Sand 6/7
- 22 Orient- und Islamwissenschaften/PF, Brasilienzentrum, Wilhelmstr. 113
- 23 Sinologie und Koreanistik/PF, Wilhelmstr. 133
- 24 Asien-Orient-Institut - Japanologie/PF, Wilhelmstr. 90
- 25 Japanologie, Köstlinstr. 6
- 26 Zentrum für Datenverarbeitung (ZDV), Wächterstr. 76
- 27 Institut für Sportwissenschaft/WiSo, Wilhelmstr. 124
- 28 Universitätssporthalle, Institut für Sportwissenschaft/WiSo, Studentisches Gesundheitsmanagement, Alberstr. 27
- 29 Institut für Ethik und Geschichte der Medizin, Bereich Geschichte der Medizin/Medizinische Fakultät, Goethestr. 6
- 30 Gästehaus der Universität, Lessingweg 3; Dozentenwohnheim, Lessingweg 1
- 31 Dekanat der Medizinischen Fakultät, Geissweg 5/1; Verwaltung des Klinikums, Geissweg 3+5
- 32 Werner Siemens Imaging Center, Röntgenweg 13
- 33 Zentrum für Klinische Studien (ZKS), Röntgenweg 9
- 34 Frauenklinik, Calwerstr. 7
- 35 Institut für Pathologie und Neuropathologie, Calwerstr. 3
- 36 Universitäts-Hautklinik, Liebermeisterstr. 25
- 37 Universitätsklinik für Psychiatrie und Psychotherapie, Osianderstr. 24
- 38 Universitätsklinik für Zahn-, Mund- und Kieferheilkunde, Osianderstr. 2-8
- 39 Department für Augenheilkunde, Elfriede-Aulhorn-Str. 7
- 40 Alte Frauenklinik: FB Psychologie/MNF, Schleichstr. 4; Leibniz-Institut für Wissensmedien (IWM), Schleichstr. 6; Wissenschaftscampus, Schleichstr. 8
- 41 Schulpsychologie/MNF, Kompetenzzentrum Schulpsychologie, Personalrat, Liebermeisterstr. 6
- 42 Theologikum: Evangelisch-Theologische Fakultät (einschl. Dekanat), Katholisch-Theologische Fakultät, Cafeteria, Liebermeisterstr. 12-16; Zentrum für Islamische Theologie (ZiTh), Liebermeisterstr. 18
- 43 Alte Kinderklinik: Geographie/MNF, Urgeschichte/MNF, Naturwissenschaftliche Archäologie/MNF; Katholisch-Theologische Fakultät: Dekanat, Institut für Ökumenische und Interreligiöse Forschung; Rümelinstr. 19-23
- 44 Institut für Pathologie und Neuropathologie, Liebermeisterstr. 8
- 45 College of Fellows, Rümelinstr. 27
- 46 Medizinische Universitätsklinik, Institut für Klinische Epidemiologie und angewandte Biometrie/Medizinische Fakultät; Psychologisches Institut, Arbeitsbereich Schulpsychologie, Silcherstr. 5
- 47 Institut für Physiologie, Keplerstr. 15
- 48 Institut für Erziehungswissenschaft, Lehrbereich Lehren und Lernen mit digitalen Medien/WiSo, SFB „Andere Ästhetik“, Keplerstr. 17
- 49 Neue Aula: Hausmeisterdienstleistungszentrum 1, Zentrale Hörsaalverwaltung, Hörsäle, Festsaal, Abteilung Einkauf/Dez. VII-3, Juristische Fakultät (einschl. Dekanat und Prüfungsamt), Großer und Kleiner Senat, Zeicheninstitut, Geschwister-Scholl-Platz
- 49 Alte Botanik: Rektorat und Zentrale Verwaltung, Universitätsbund e. V., Wilhelmstr. 5
- 50 Haus der Sprachen: Deutsch als Fremdsprache und Interkulturelle Programme/Dez. V-2, Fremdsprachenzentrum/Dez. V-3, Wilhelmstr. 22
- 51 Universitätskasse, Rechnungswesen/Dez. VII-4, Steuern/Dez. VII-5, Stabsstelle Controlling, Zentrum für Evaluation und Qualitätsmanagement (ZEQ), Hörsäle, Wilhelmstr. 26
- 52 Clubhaus: Studierendenrat, Wilhelmstr. 30
- 53 Kupferbau: Hörsaalgebäude, Hölderlinstr. 5
- 54 Dez. VIII – Bau, Arbeitssicherheit, Umwelt; Bau und Fläche/Dez. VIII-1, Sigwartstr. 17
- 55 Arbeitssicherheit/Dez. VIII-2; Umweltschutz und Energiemanagement mit EMAS-Koordinationsstelle/Dez. VIII-3, Hölderlinstr. 11
- 56 Hochschuldidaktik/Dez. III-3, Sigwartstr. 20
- 57 Logopädiechule des Universitätsklinikums, Hölderlinstr. 19
- 58 Paläontologische Forschungsbereiche des Senckenberg Centre for Human Evolution and Palaeoenvironment (SHEP), Paläontologische Lehr- und Schausammlung/MNF, Institut für Naturwissenschaftliche Archäologie – Archäometrie/PF, Eckgebäude Hölderlinstr. 12/Sigwartstr. 10
- 59 Alte Physik: Juristische Fakultät, Gmelinstr. 6
- 60 Alte Archäologie und Nebengebäude: Studio Literatur und Theater/Dez. III, Dez. V – International Office, Austauschprogramme/Dez. V-1, Eingang Wilhelmstr. 9; Kultureferat. Hörsäle, Eingang Nauklerstr. 2; US-Programme/Dez. V-1, Nauklerstr. 2/1
- 61 Zoologische Lehr- und Schausammlung, Sigwartstr. 3
- 62 Dez. III Studium & Lehre, Wissenschaftliche Weiterbildung/Dez. III-2, Wilhelmstr. 11
- 63 Mensa I, Wilhelmstr. 13-15
- 64 Universitätsbibliothek, Universitätsarchiv, Graphische Sammlung, Cafeteria, Wilhelmstr. 32
- 65 Hegelbau: FB Geschichtswissenschaft/PF, Philologisches Seminar/PF, Institut für Soziologie/WiSo, Wilhelmstr. 36
- 66 Studierendenwerk Tübingen-Hohenheim, Hauptverwaltung und Psychotherapeutische Beratungsstelle, Friedrichstr. 21
- 67 Verfügungsgebäude Wilhelmstraße: Dez. IV Studierende: Studierendenabteilung, Studiendensekretariat/Dez. IV, Sachgebiet Zulassung Internationaler Studierender/Dez. IV-1, Zentrale Studienberatung inklusive Beratung für Studierende mit Behinderung oder chronischer Erkrankung/Dez. IV-3; Diversitätsorientiertes Schreibzentrum/Dez. III, Welcome Center/Dez. II-4, Zentrales Prüfungsamt/Dez. IV-2, Gleichstellungsbeauftragte, Gleichstellungsbüro, Familienbüro, Diversitätsbüro, Beauftragte für Chancengleichheit, Wilhelmstr. 19

© Glossar: Eberhard Karls Universität Tübingen, Dezernat III – Studium und Lehre Stand 06/2025

© Lageplan: Eberhard Karls Universität Tübingen, Hochschulkommunikation Stand 12/2021; Karte: GeoKarta

- 68 Institut für Tropenmedizin; Institut für Arbeitsmedizin, Sozialmedizin und Versorgungsforschung; Betriebsärztlicher Dienst; Comprehensive Infectious Disease Center, Wilhelmstr. 27
- 69 Dekanat PF, Hörsaal, Sinologie – Greater China Studies/PF, Seminar für Sprachwissenschaft (SfS)/PF, European Research Center on Contemporary Taiwan (Europäisches Taiwanzentrum), Überfachliche Bildung und Berufliche Orientierung (TRACS)/Dez. III-4, EZFF – Europäisches Zentrum für Föderalismusforschung, International and European Studies/Dez. V-2, Dr. Eberle Zentrum für digitale Kompetenzen/eScience Center, Schwerbehindertenvertretung, BaFöG-Info-Point, Keplerstraße 2
- 70 Neuphilologikum („Brechtbau“): Deutsches Seminar/PF, Englischs Seminar/PF, Romanisches Seminar/PF, Slavisches Seminar/PF, Seminar für Allgemeine Rhetorik/PF, Institut für Medienwissenschaft/PF, E-Learning Support Center, Zentrum für Medienkompetenz, Brechtbau-Bibliothek, Brechtbau-Theater, Cafeteria, Wilhelmstr. 50
- 71 Lothar-Meyer-Bau: Mineralogie und Geodynamik/MNF, Mineralogische Schau- und Lehrsammlung/MNF, Ethik, Theorie und Geschichte der Biowissenschaften/MNF, Internationales Zentrum für Ethik in den Wissenschaften (IZEW); Institut für Experimentelle und Klinische Pharmakologie und Pharmakogenomik, Institut für Physiologie/Medizinische Fakultät; Akad. Personalentwicklung und Graduiertenakademie/Dez. II-1, Wilhelmstr. 56
- 72 Institut für Politikwissenschaft/WiSo, Melanchthonstr. 36
- 73 FB Wirtschaftswissenschaft/WiSo, Mohlstr. 36
- 74 Methodenzentrum/WiSo, Haußerstr. 11
- 75 FB Wirtschaftswissenschaft/WiSo, Nauklerstr. 47
- 76 Dekanat WiSo, Nauklerstr. 48
- 77 Schloss/Haspelturm: Ludwig-Uhland-Institut für Empirische Kulturwissenschaft (LUI)/WiSo, Burgsteige 11/2
- 78 Schloss: Urgeschichte und Naturwissenschaftliche Archäologie/MNF, Institut für Ur- und Frühgeschichte und Archäologie des Mittelalters/PF, Institut für Kulturen des Alten Orients (Ägyptologie, Altorientalische Philologie, Vorderasiatische Archäologie)/PF, Institut für Klassische Archäologie/PF, Ethnologie/PF, MUT im Schloss Hohentübingen, Burgsteige 11
- 79 Evangelisches Stift, Klosterberg 2
- 80 Alte Burse: Philosophisches Seminar/PF, Kunsthistorisches Institut/PF, Bursagasse 1
- 81 Alte Aula, Festsaal, Münzgasse 30
- 82 Institut für Erziehungswissenschaft/WiSo, Münzgasse 11 und 22-30
- 83 Mensa Prinz Karl, Hafengasse 6
- 84 Pflerhof: Musikwissenschaftliches Institut/PF; Collegium Musicum, Geschäftsstelle des MUT, Schulberg 2
- 85 Institut für Klinische Anatomie und Zellanalytik/Medizinische Fakultät; Graduate School of Neural & Behavioural Sciences/MNF, Österbergstr. 3
- 86 Carl Friedrich von Weizsäcker Zentrum, Tübinger Forum für Wissenschaftskulturen, Doblerstr. 33
- 87 Hector-Institut für Empirische Bildungsforschung, Europastr. 6
- 89 Shedhalle, Schlachthausstr. 13
- 90 Psychotherapeutische Hochschulambulanz, SFB „RessourcenKulturen“, Gartenstr. 29
- 91 Institut für Ethik und Geschichte der Medizin, Bereich Ethik in der Medizin/Medizinische Fakultät, Gartenstr. 47
- 92 Institut für Religionswissenschaften/PF, Indologie und Vergleichende Religionswissenschaft/PF, Nauklerstr. 35
- 93 Weltethos-Institut, China Centrum Tübingen, Hintere Grabenstr. 26
- 94 Tübingen School of Education, Wilhelmstr. 31
- 95 Tübingen AI Research Building: FB Informatik/MNF, Exzellenzcluster Maschinelles Lernen, Maria-von-Linden-Str. 6
- 96 Dez. II – Forschung, Rümelinstr. 32
- 97 Hector-Institut für Empirische Bildungsforschung, Graduiertenschule & Forschungsnetzwerk LEAD, Walter-Simon-Str. 12
- 98 FB Wirtschaftswissenschaften/WiSo, Melanchthonstr. 30
- 99 Leibniz Kolleg, Brunnenstr. 34
- 102 Personalentwicklung/Dez.VI.3, Doblerstraße 21

Abkürzungen | FB: Fachbereich; MNF: Mathematisch-Naturwissenschaftliche Fakultät; PF: Philosophische Fakultät; WiSo: Wirtschafts- und Sozialwissenschaftliche Fakultät; MUT: Museum der Universität Tübingen; Dez: Dezernat







# Uni-Kliniken Tal

## Kliniken

- 330** Frauenklinik  
Neonatologie  
Medizinische Genetik
- 352 - 350** Hautklinik
- 211 - 210** Kinder- und  
Jugendpsychiatrie
- 204 - 200** Psychiatrie und  
Psychotherapie
- 250** Psychiatrische  
Institutsambulanz PIA

## Kliniken

- 365** ViTa Gebäude
- 360** Zahn-, Mund- und  
Kieferheilkunde (ZMK)
- 332** Implantologie

## Institute

- 342 - 340** Neuropathologie
- 380** Pathologie
- 370** Medizinische Biometrie  
Medizinische Psychologie

## Schulen

- 371** Laborassistenten (MTA-L)

## Weitere Gebäude

- 331** Casino Tal
- 303** Dekanat  
Medizinische Fakultät
- 325 - 322** Kindertagesstätte
- 301** Klinikumsverwaltung
- K** Kupferbau
- N** Neue Aula
- T** Theologicum



# Uni-KlinikenBerg

## Kliniken

- 420 - 400** Crona Kliniken
- Allgemeine, Viszeral- und Transplantationschirurgie
  - Anaesthesiologie und Intensivmedizin
  - Neurochirurgie
  - Neurologie
  - Orthopädie
  - Radiologie
  - Radioonkologie
  - Thorax-, Herz- und Gefäßchirurgie
  - Urologie
- 480** Gesundheitszentrum
- Sportmedizin
  - Psychosomatische Tagesklinik

## Kliniken

- 600** Hals-, Nasen- und Ohrenheilkunde
- 620** Augenklinik
- 430** Hochpräzisionsbestrahlung
- 410** Kinderklinik
- 560 503 - 500** Medizinische Klinik
- 552** MEG-Zentrum
- 530** Nuklearmedizin

## Institute / Schulen

- 568** FIN / CIN  
Medizinische Psychologie  
FORS
- 569** Forschungsverfügungsgebäude  
Hertie Institut für  
Klinische Hirnforschung
- 551** Neuromodulation und  
Neurotechnologie
- 610** Medizinische Mikrobiologie  
Medizinische Virologie
- 630** Hebammenwissenschaft  
Pflegerwissenschaft
- 545 - 540** Schule für Pflegeberufe  
Akademie

## Weitere Gebäude

- 510** Blutspendezentrale
- 520** Konferenzzentrum  
Schnarrenberg
- 650** Lehr- und Lerngebäude
- A** Anatomie
- B** Biochemie
- C** Ronald McDonald Haus
- D** DZNE

# Imprint

## PUBLISHER

Eberhard Karls University Tübingen  
Division III – Academic Affairs  
Wilhelmstraße 11  
72074 Tübingen  
dezernat-studium-und-lehre@zv.uni-tuebingen.de

## EDITOR

Lucia Vennarini, Wiebke Gwynn Wettach

## EDITORIAL DESIGN

Heiko Heil, Carina Klink

## PRINTING (GERMAN)

Stengel+Partner, Reutlingen

## EDITION

Digital edition (english)

Reproduction – including extracts – only permitted with publisher's consent.

© Eberhard Karls Universität Tübingen 2025



## PHOTOGRAPHS AND GRAPHICS

Heiko Heil title graphic and S. 44; Benedikt Reder S. 5, 75, 81; © Bildarchiv Foto Marburg S. 13, 73; Verfasste Studierendenschaft Uni Tübingen S. 14; haypong/fotolia S. 18; iStock.com/AndreyPopov S. 21, 76, 77; Brian Jackson/fotolia S. 22; Sergey Nievens/fotolia S. 25; coresince84/photocase.de S. 29; iStock.com/wildpixel S. 30; University of Tübingen/Friedhelm Albrecht S. 31, 62; Inga Paas S. 33; iStock.com/12963734 S. 36; olly/fotolia S. 39; Steffen Sixt S. 41, 42; University of Tübingen S. 47; ZITH Miguel Babo S. 47, Javier Trueba/Unsplash S. 52; iStock.com/Bet\_Noire S. 53; University Library Tübingen S. 56; Luxuz::/photocase.de S. 57; Joachim E. Röttgers S. 65; CC-BY-SA 4.0 Elia Šandor S. 66; MUT – Museum Uni Tübingen S. 68; Uni Tübingen/ZFM S. 71; Mr. Nico/photocase.de S. 78; iStock.com/Foxys\_forest\_manufacture S. 79; Maria Vaorin/photocase.de S. 80; Grafiken: Heiko Heil S. 6, 60; Elke Neudert S. 7; University of Tübingen Division III – Academic Affairs S. 9; University of Tübingen/BeTaBalance S. 65; weitere: freepik.com

