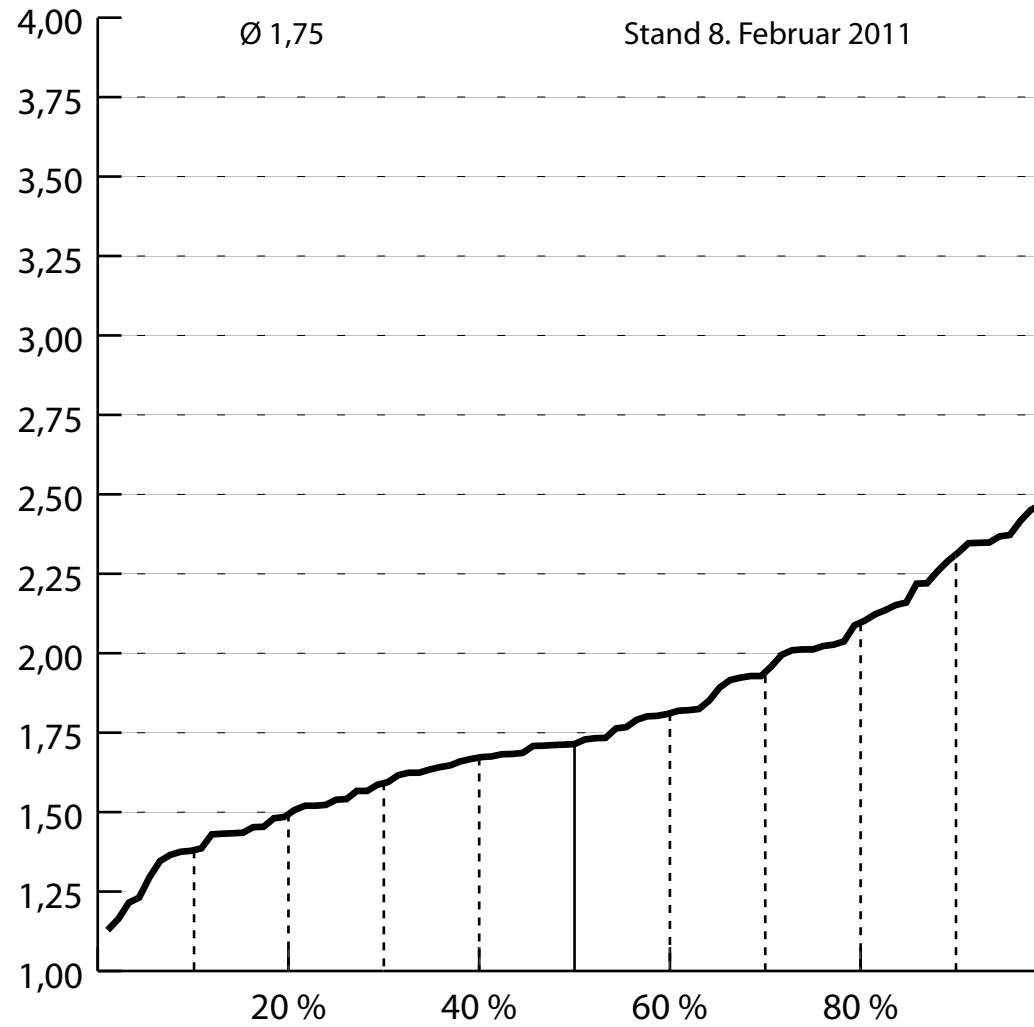




Notenverteilung des *Bachelor of Science* in Biologie  
am Fachbereich Biologie der Universität Tübingen

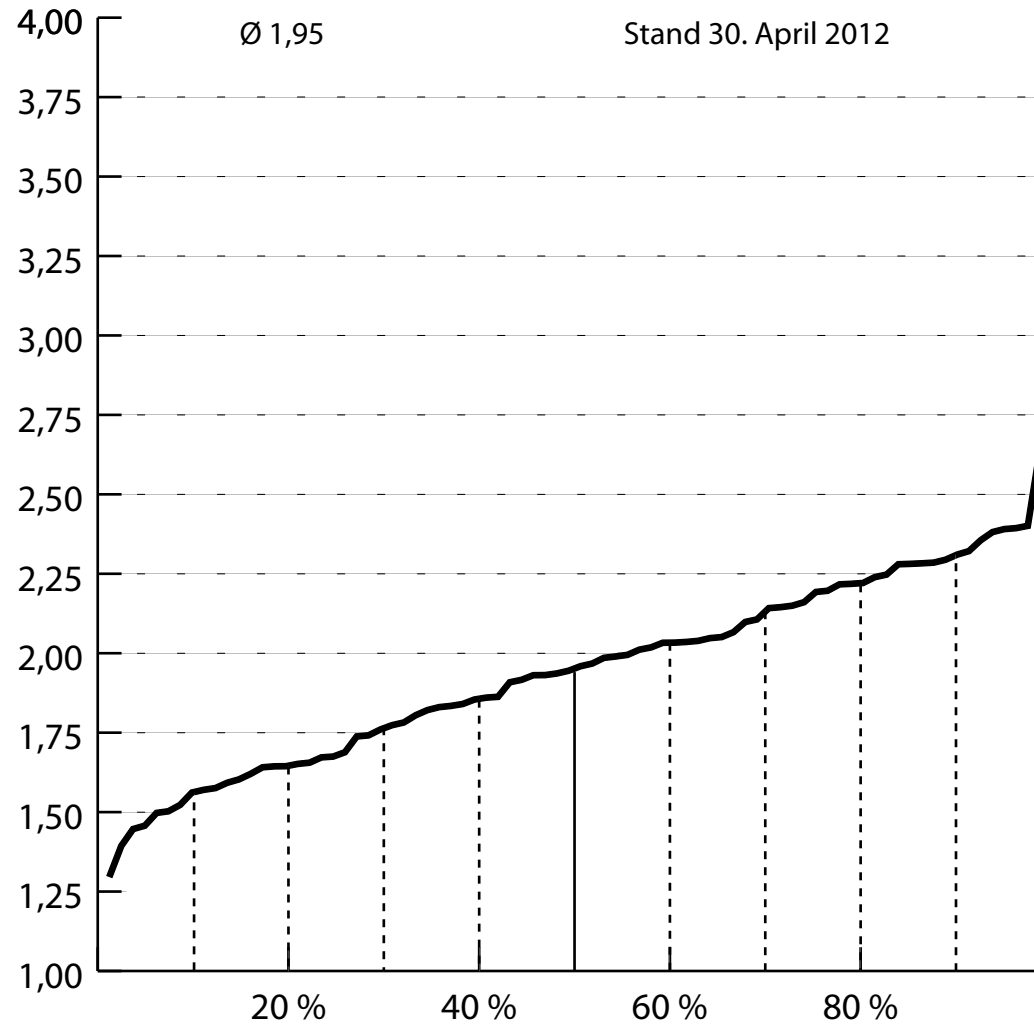


### Notenverteilung des BSc Biologie, 1. Kohorte (Abschluss 2010/11)



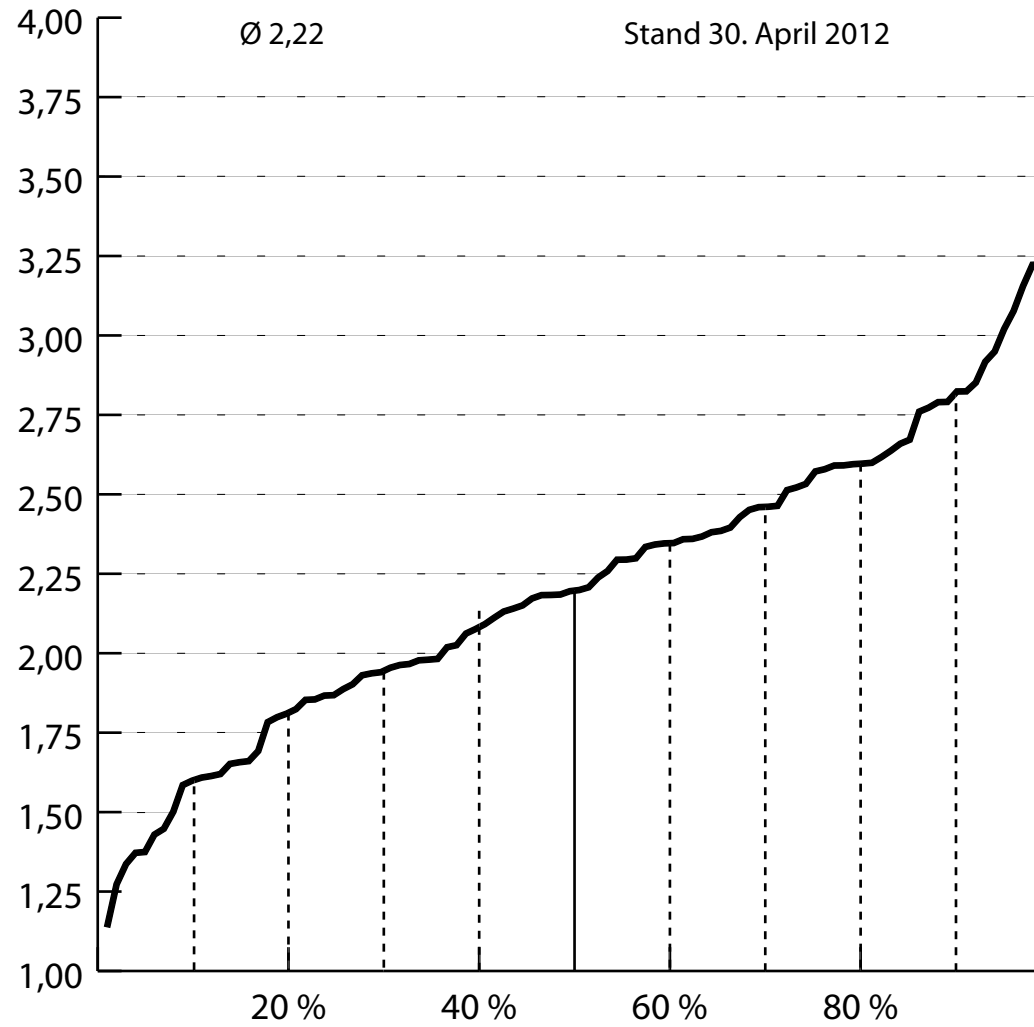


### Notenverteilung des BSc Biologie, 2. Kohorte (Abschluss 2011/12)



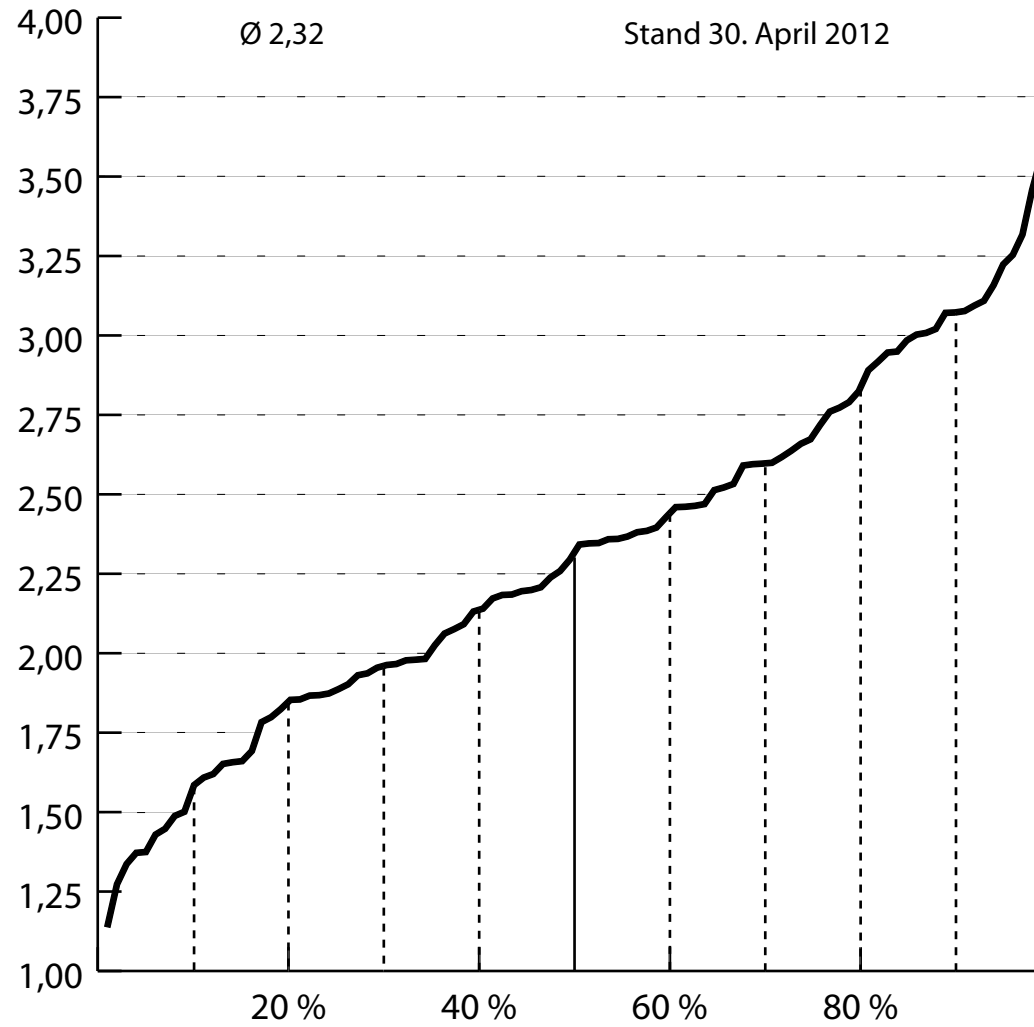


### Notenverteilung des BSc Biologie, $\geq 6.$ FS (Zwischenprüfung bestanden)



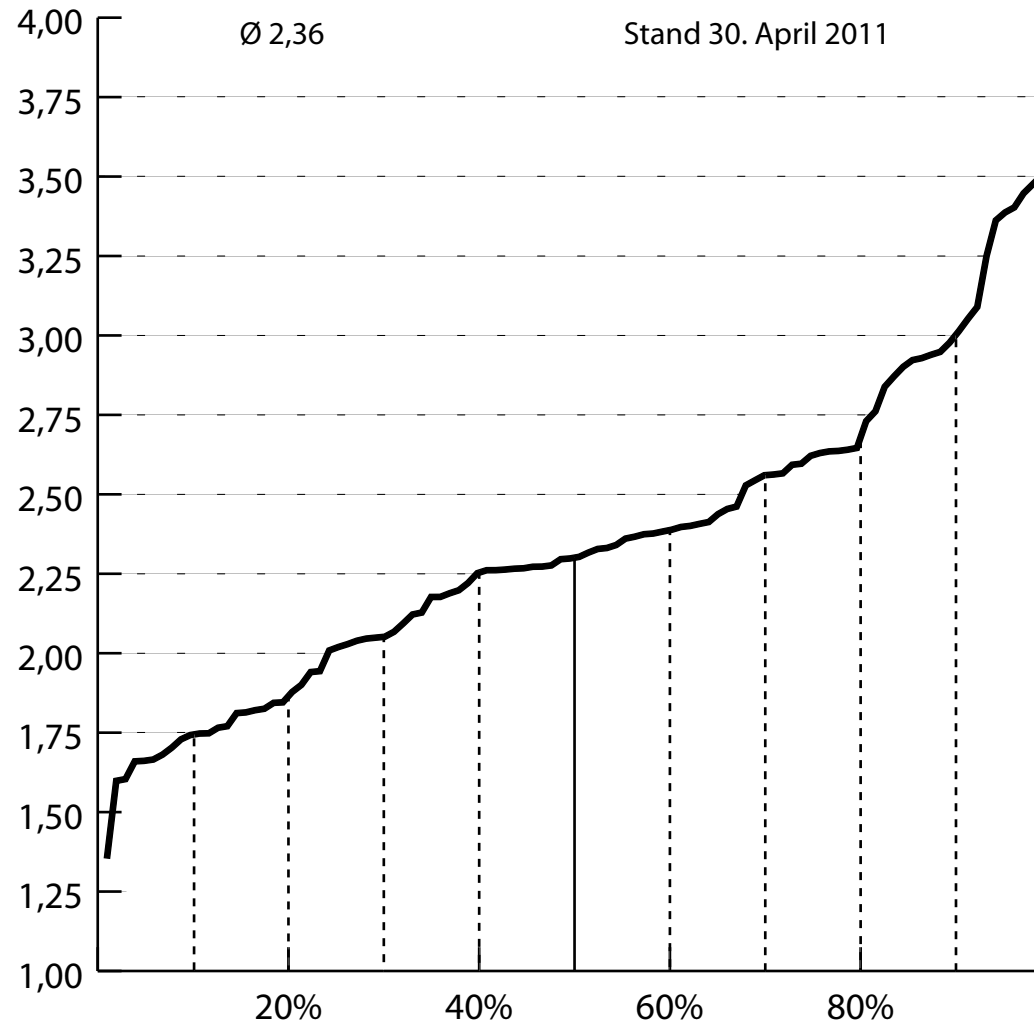


Notenverteilung des BSc Biologie, 6. FS (Start WiSe 09/10)



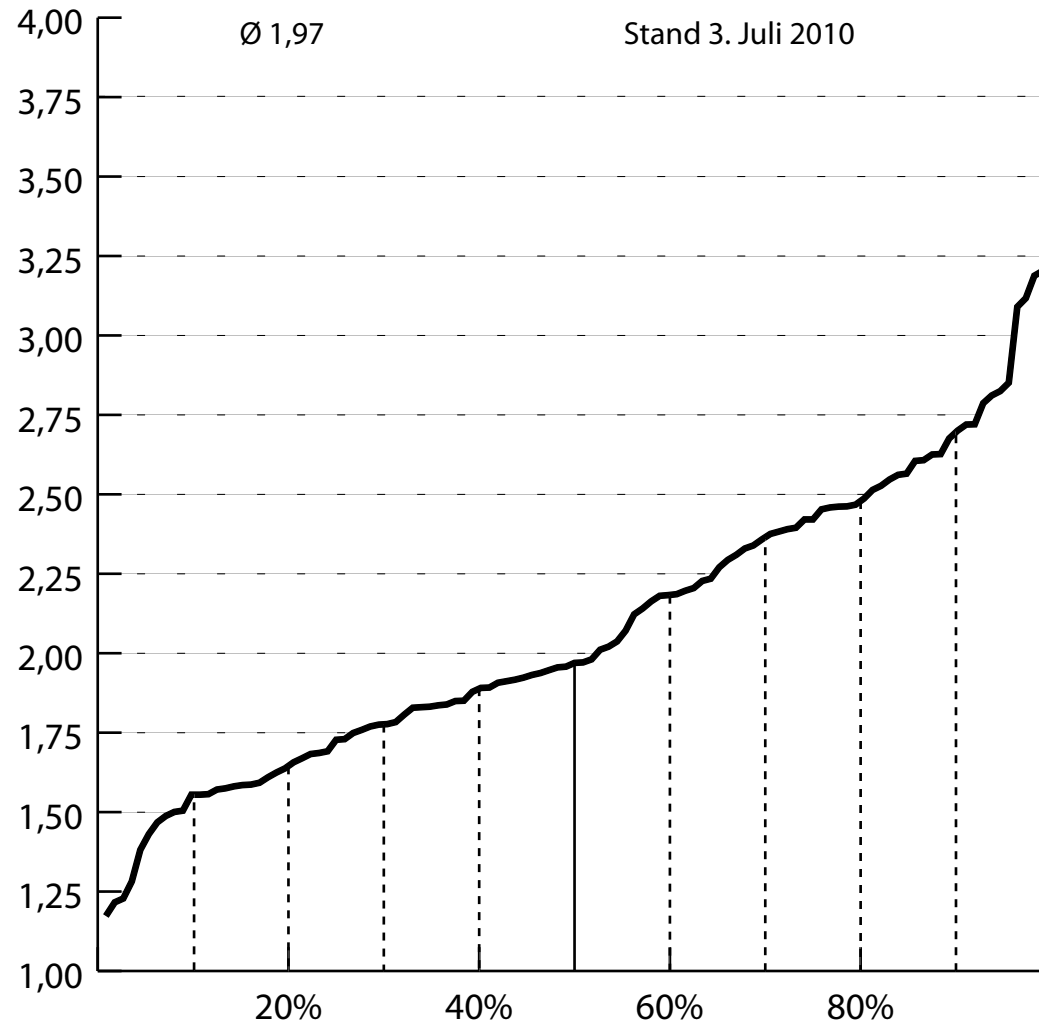


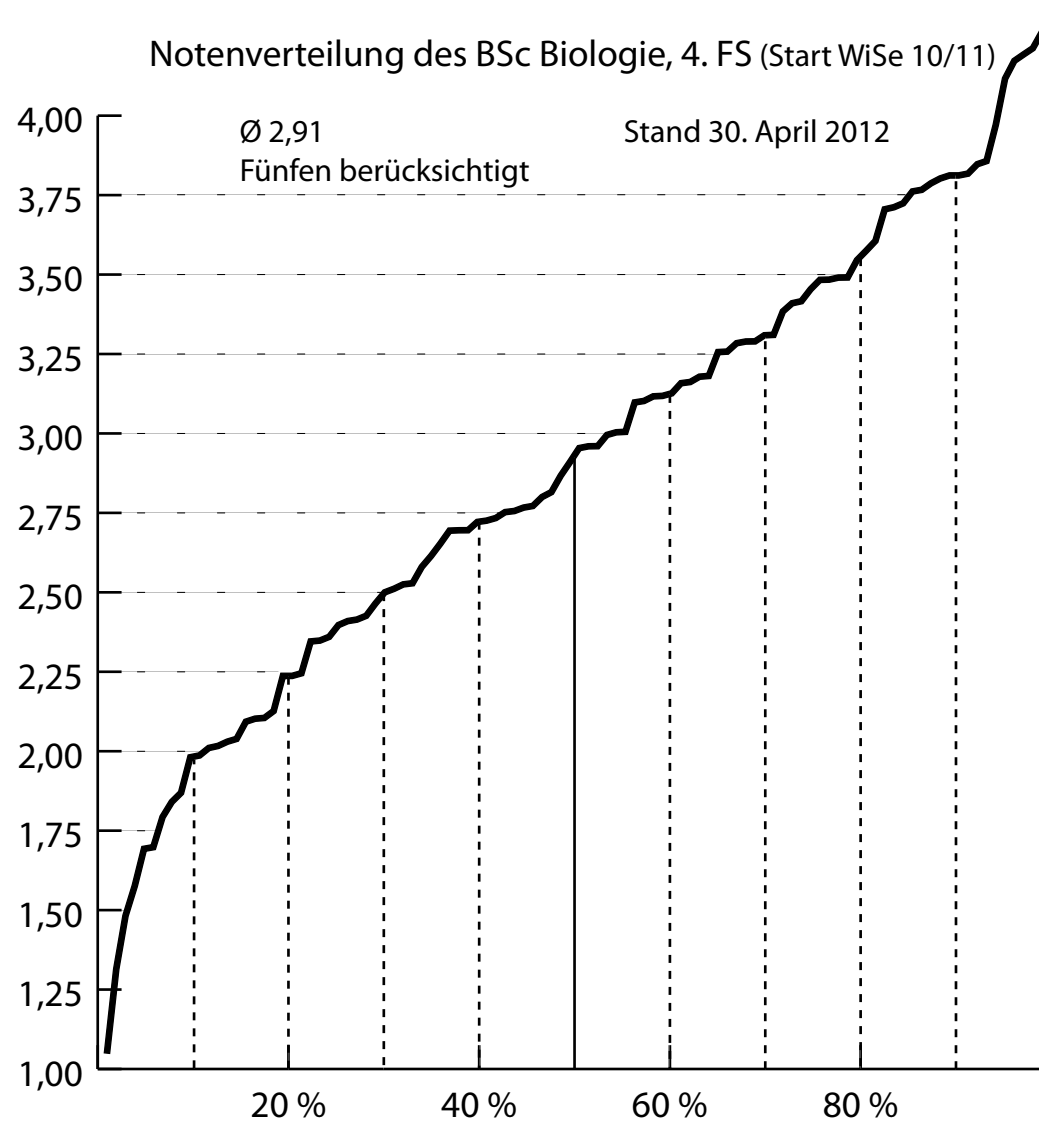
### Notenverteilung des BSc Biologie, 6. FS (Start WiSe 08/09)





### Notenverteilung des BSc Biologie, 6. FS (Start WiSe 07/08)

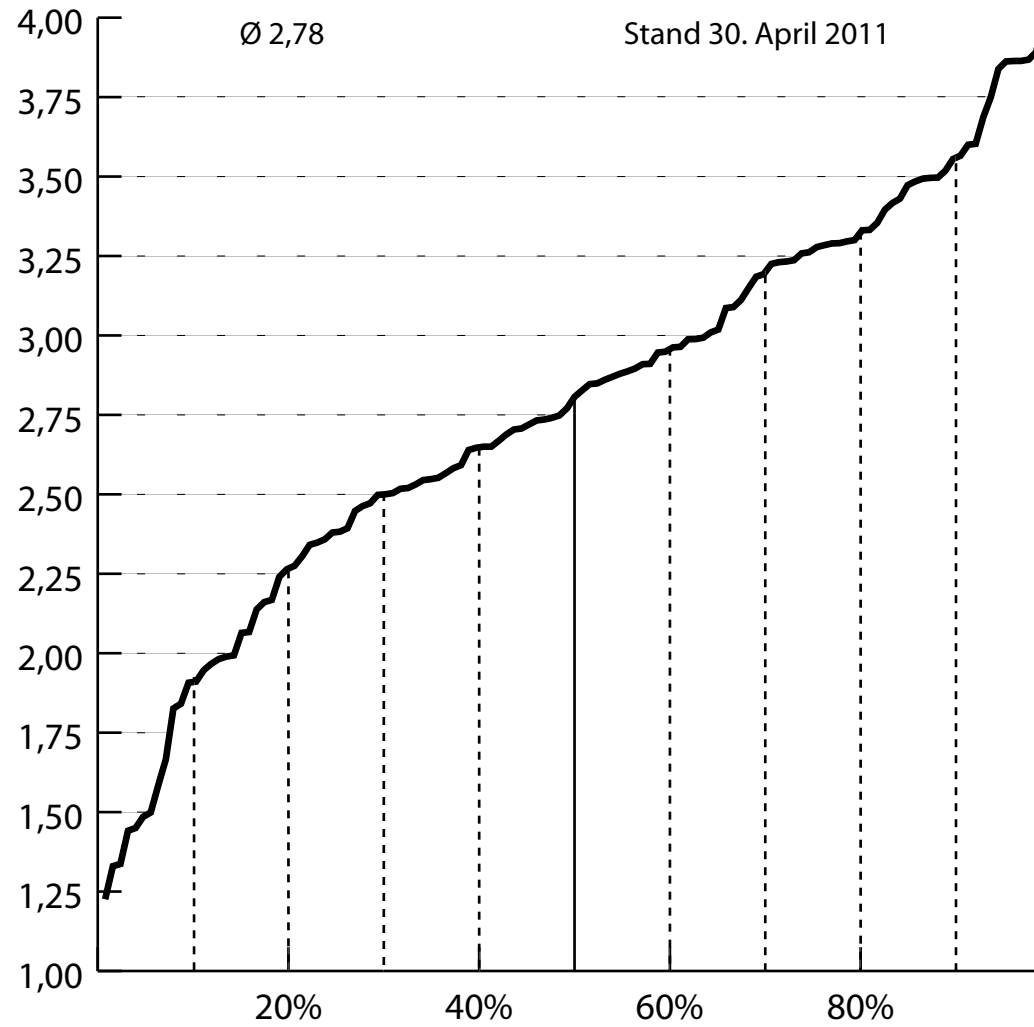








### Notenverteilung des BSc Biologie, 4. FS (Start WiSe 09/10)





### Notenverteilung des BSc Biologie, 4. FS (Start WiSe 08/09)

