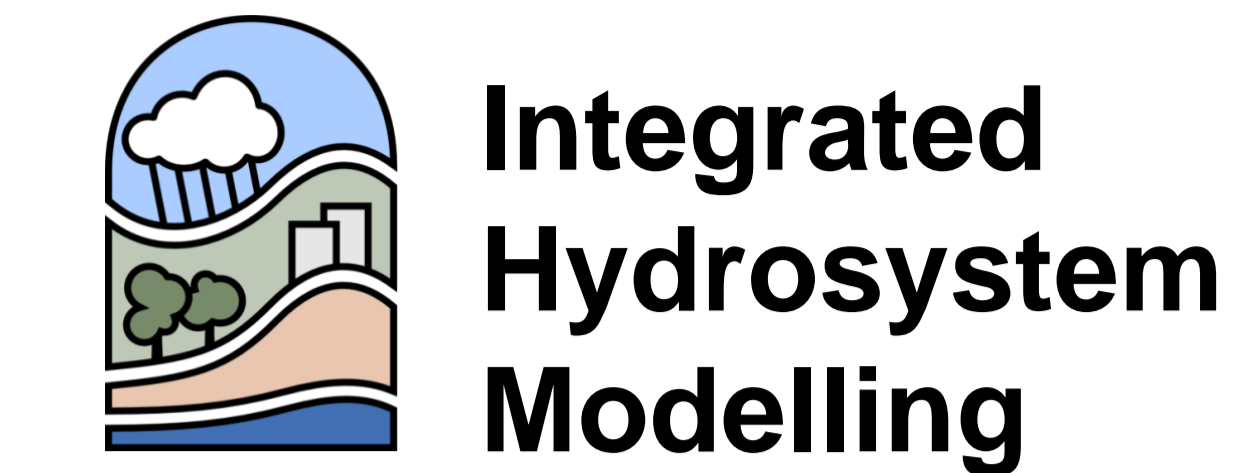


Modeling the Fate of Sediments and Attached PAHs in a Baseflow-Dominated River

Yan Liu¹, Christiane Zarfl¹, Nandita B. Basu² and Olaf A. Cirpka¹

¹Center for Applied Geoscience, University of Tübingen, 72074 Tübingen, Germany

²Department of Civil and Environmental Engineering, University of Waterloo, Waterloo, ON N2L 3G1, Canada

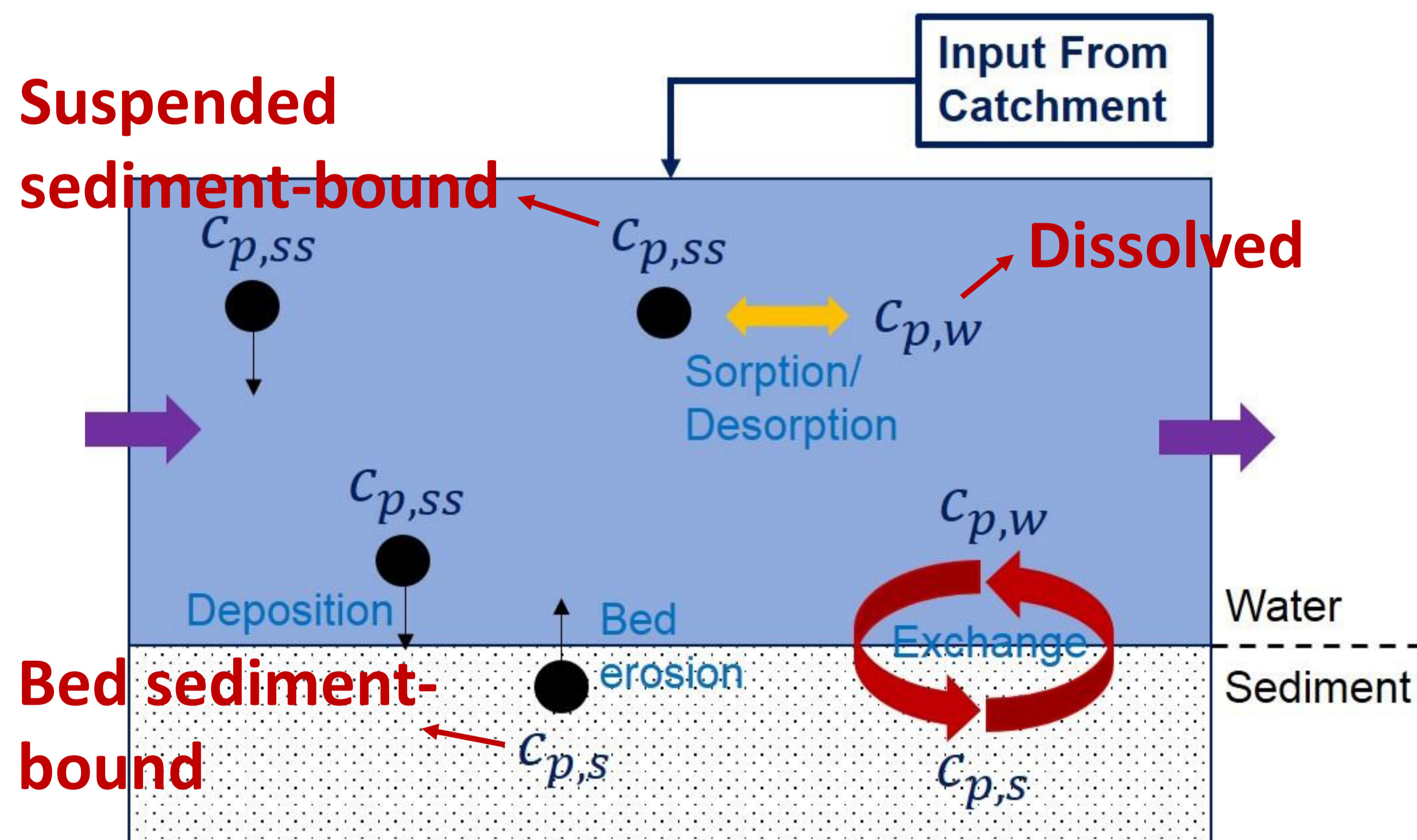


Motivation

- Sorption to and transport with sediment particles facilitates transport of hydrophobic pollutants (e.g. polycyclic aromatic hydrocarbons, PAH) in rivers
 - High suspended-sediment concentrations and strongly sorbing compounds impact water quality
- ⇒ Mechanistic models of sediment and sediment-facilitated transport → fate of micropollutants

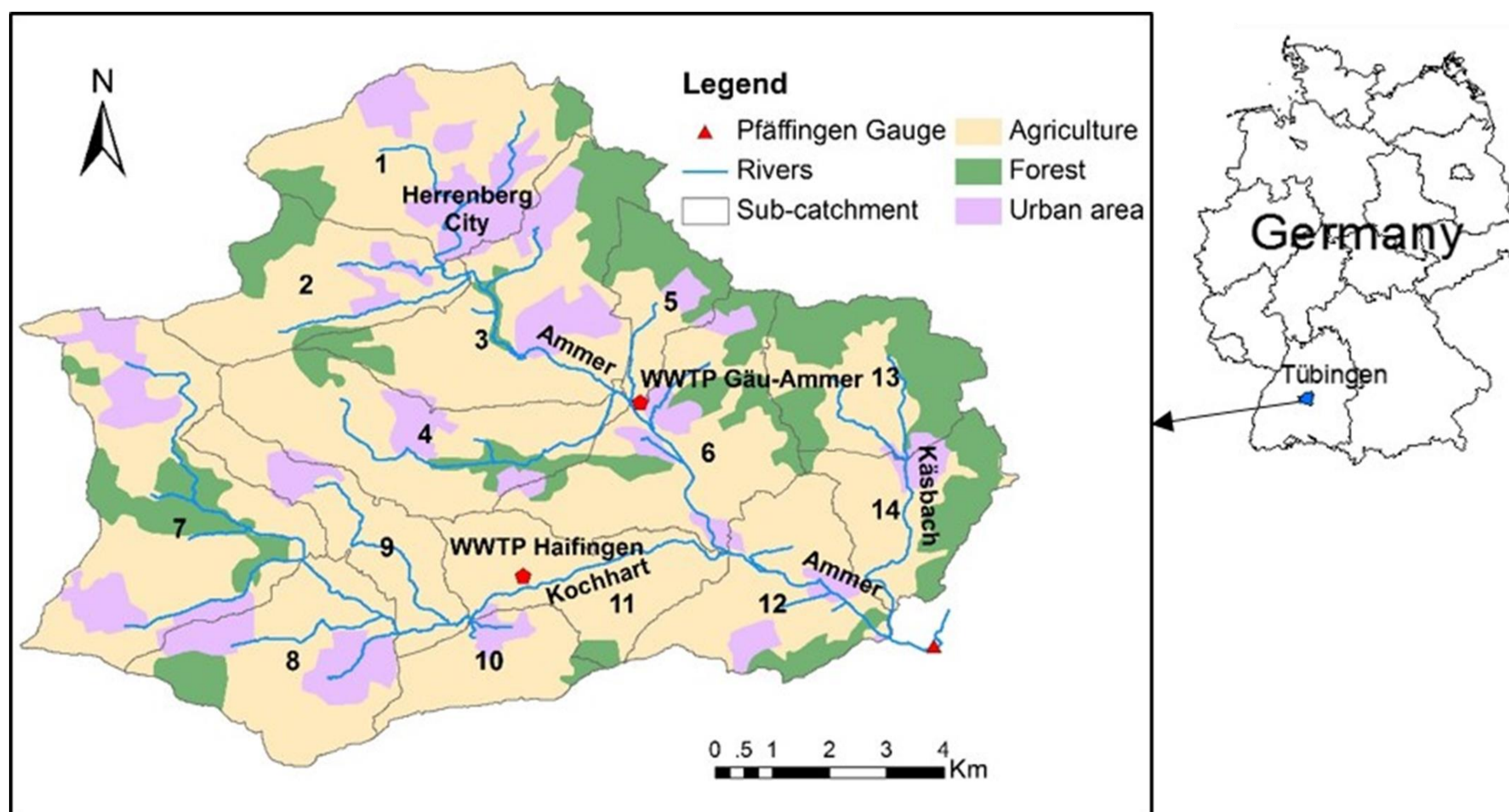
Conceptual Model

- Well evaluated with turbidity and PAH measurements



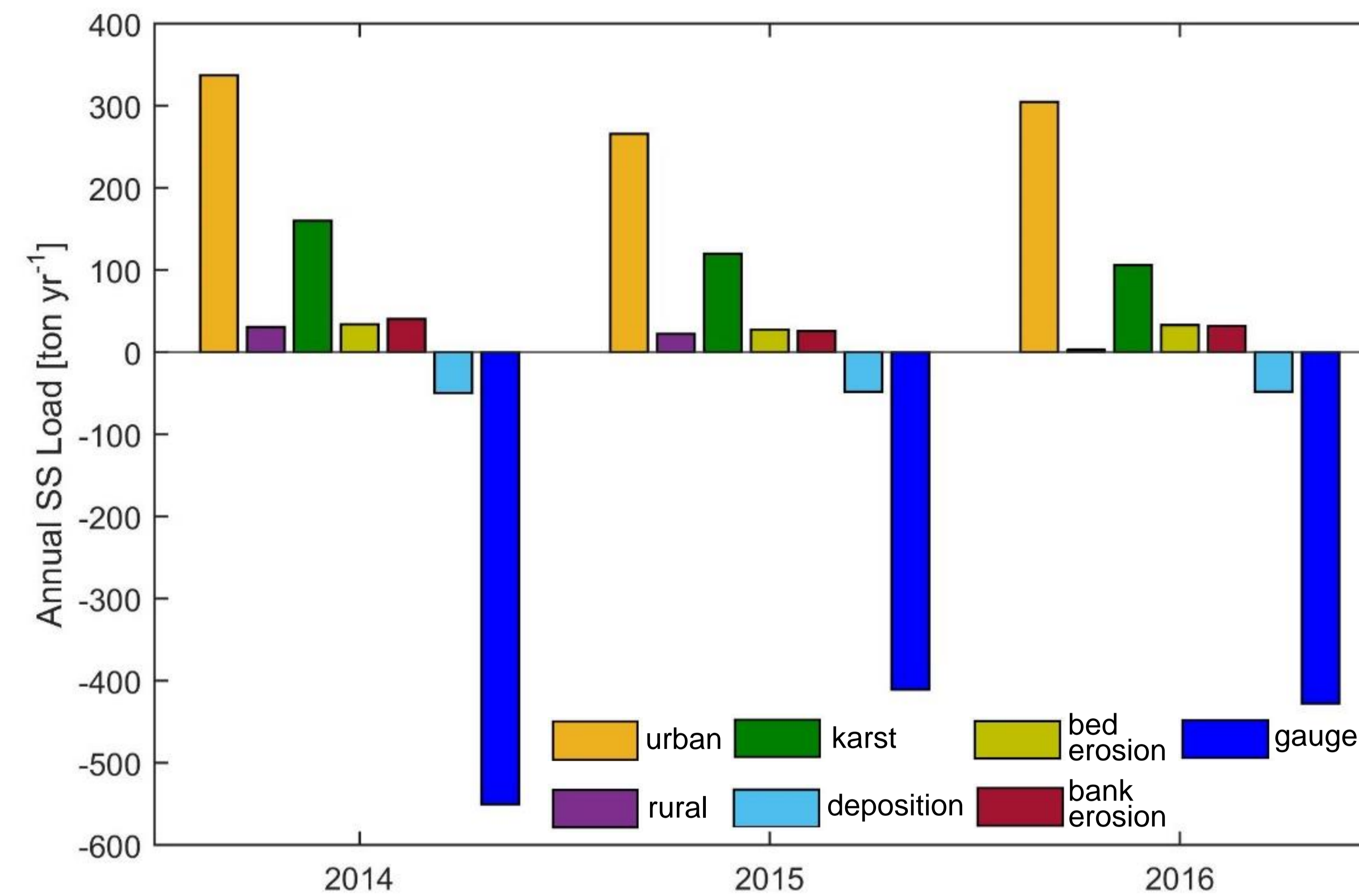
River Ammer

- Baseflow dominated with a slightly hilly catchment
- Mean discharge $\approx 1 \text{ m}^3 \text{ s}^{-1}$



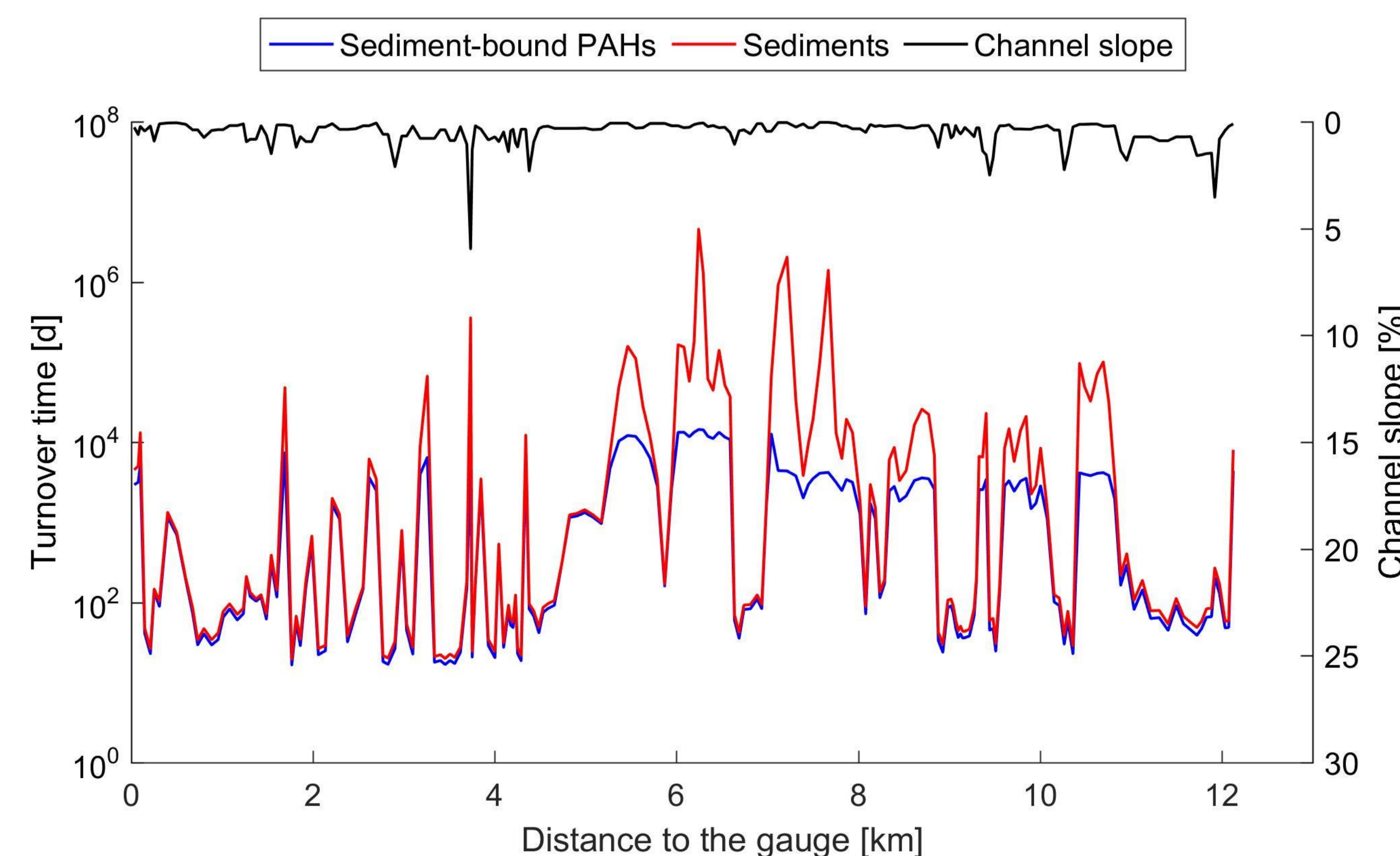
Annual Suspended-Sediment Load

- Urban particles dominate



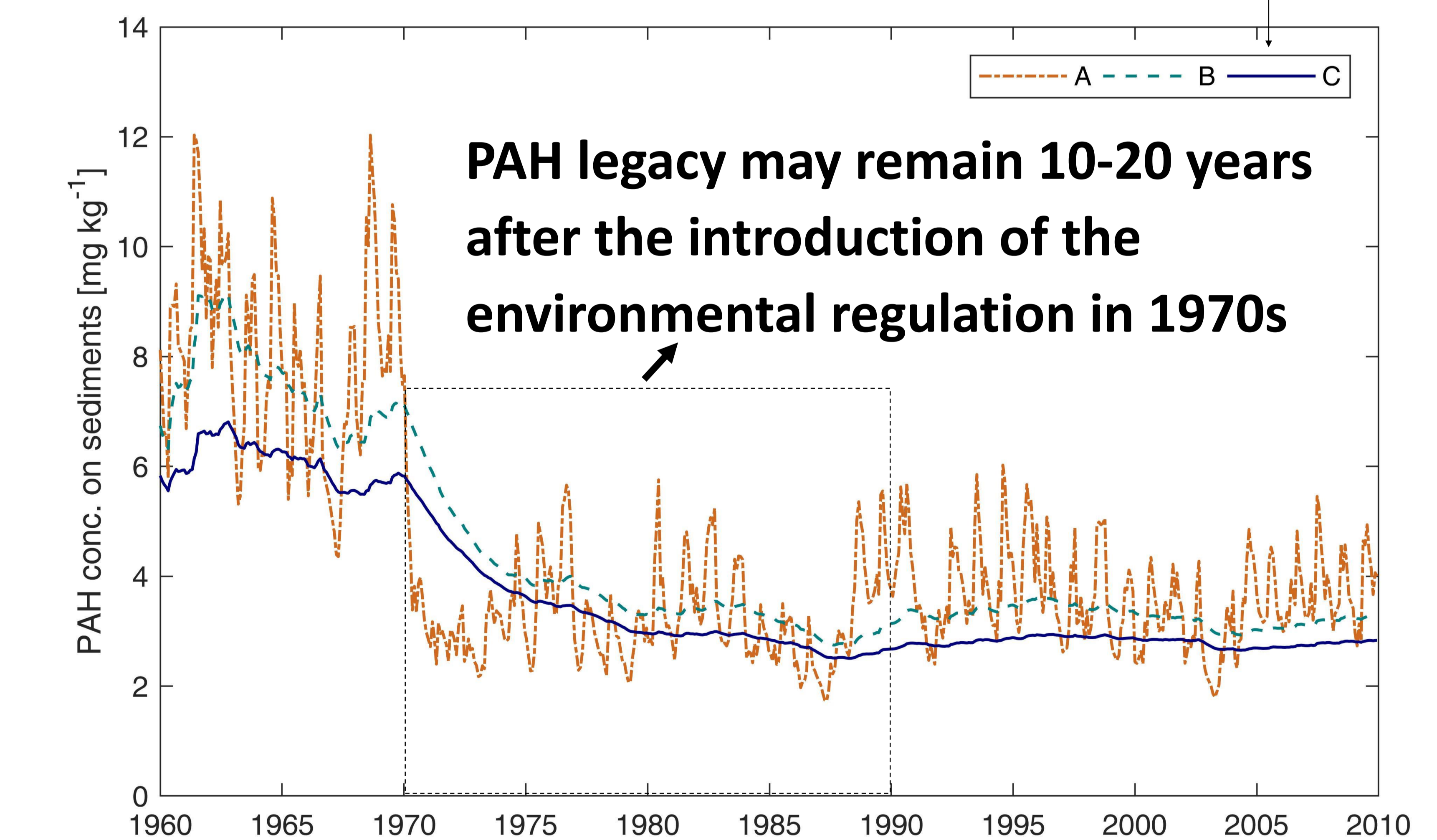
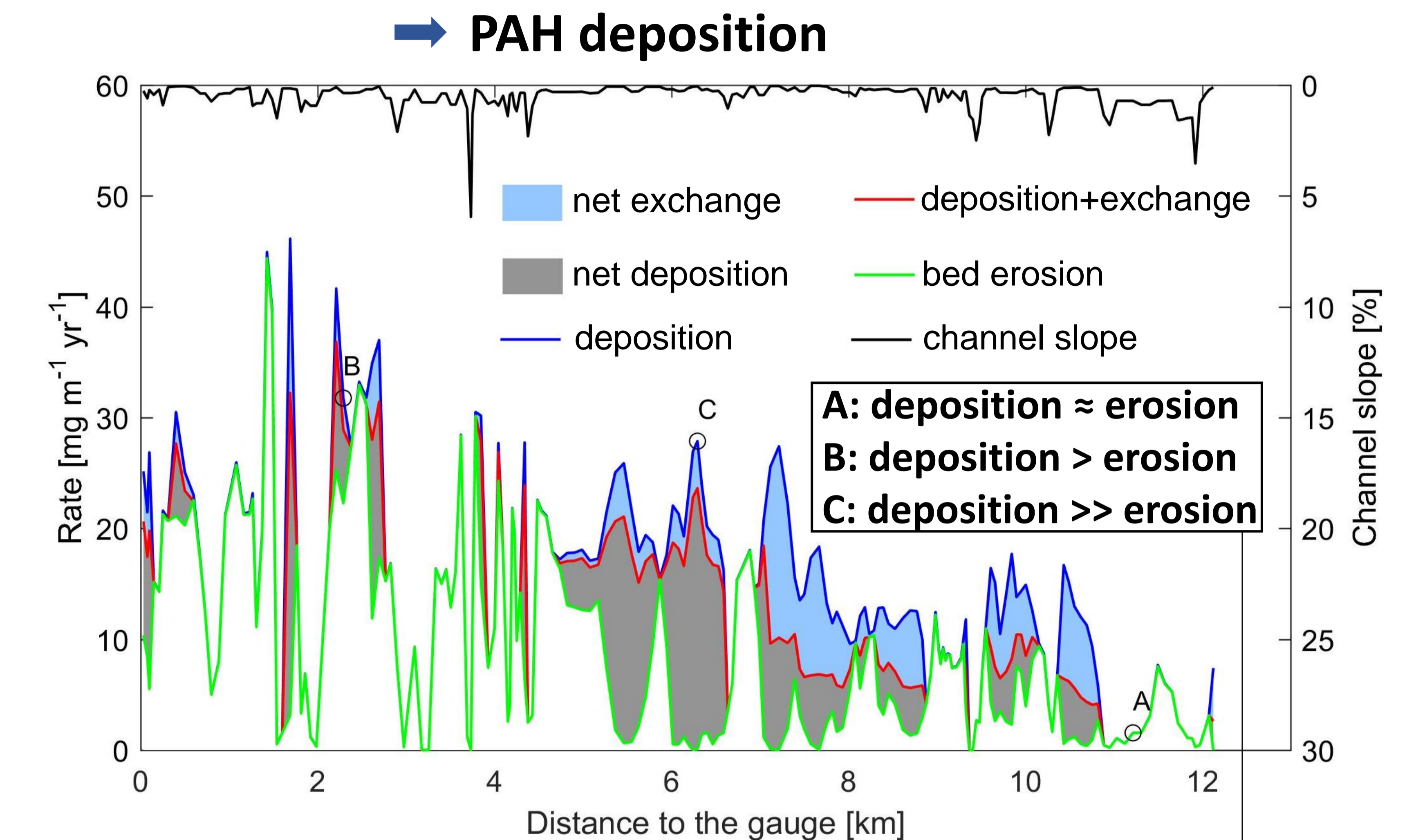
Turnover of Sediments and Attached PAH

- Steep reaches: **sediment turnover** → PAH turnover
- Very mild river reach: diffusion of PAH from the river bed to water is relevant, and **reduces PAH turnover times**



PAH legacy in the Ammer River

- Mild reaches: net sediment deposition



Conclusions

- Sediment supply determines to a large extent the PAH supply
- Sediment turnover governs the turnover of PAH in steep reaches, whereas diffusion plays roles in mild reaches
- PAH legacy may occur in the sediment trapping reaches

References

Yan Liu, *et al.* (2018). Contributions of catchment and in-stream processes to suspended sediment transport in a dominantly groundwater-fed catchment. *HESS*, 22: 3903-3921.
Yan Liu, *et al.* (2018). Turnover and legacy of sediment-associated PAH in a baseflow-dominated river. *in preparation*